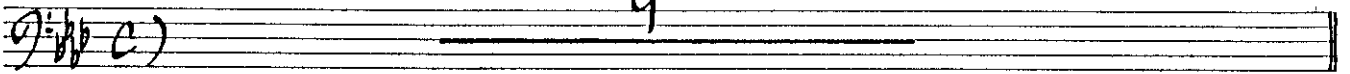


QUIET CALL

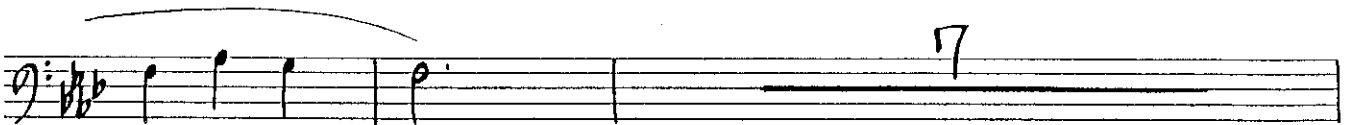
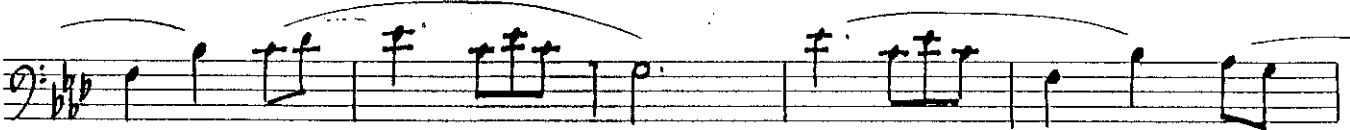
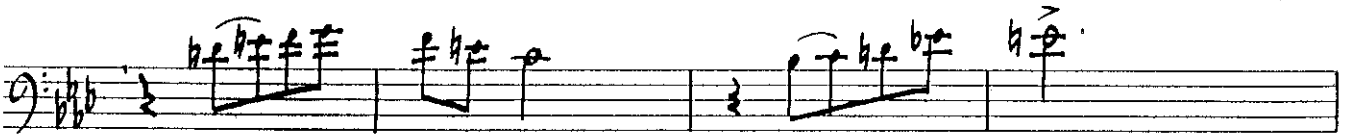
Solo
TROMBONE

I. Allegretto

Allegretto $\text{♩} = 138$



A



© M 10A*

Handwritten musical notation on a single staff. It begins with a treble clef and a key signature of two flats (B-flat and E-flat). The first measure contains a quarter rest. The second measure starts with a dynamic marking *f* and contains a quarter note followed by a beamed eighth-note triplet. Above the staff, there is a circled number '8' and a circled 'C'.

Handwritten musical notation on a single staff, continuing from the previous staff. It features a quarter note followed by a beamed eighth-note triplet, then a quarter note, another beamed eighth-note triplet, and finally a quarter note.

Handwritten musical notation on a single staff. It starts with a quarter note, followed by a beamed eighth-note triplet, then a quarter note, another beamed eighth-note triplet, and ends with a quarter note.

Handwritten musical notation on a single staff. It begins with a quarter note, followed by a beamed eighth-note triplet, then a quarter note, another beamed eighth-note triplet, and ends with a quarter note.

Handwritten musical notation on a single staff. It starts with a quarter note, followed by a beamed eighth-note triplet, then a quarter note, another beamed eighth-note triplet, and ends with a quarter note. Dynamic markings *ff* and *mp* are present.

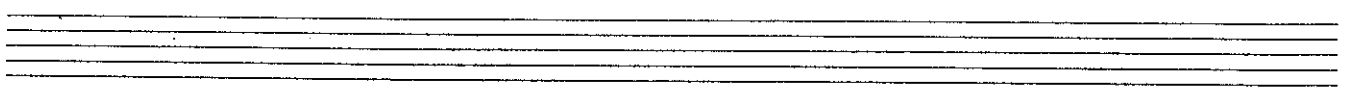
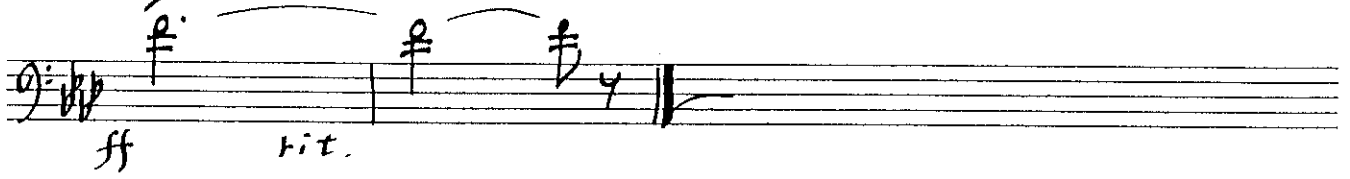
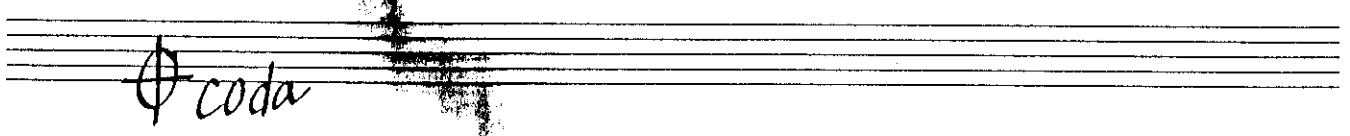
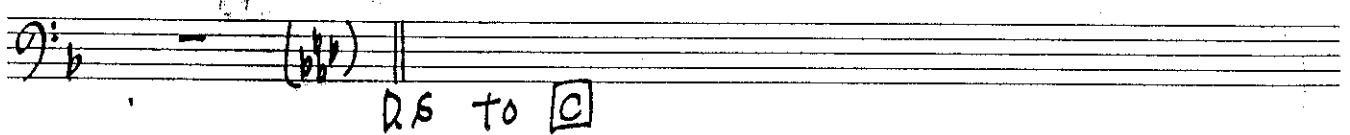
Handwritten musical notation on a single staff. It features a quarter note followed by a beamed eighth-note triplet, then a quarter note, another beamed eighth-note triplet, and ends with a quarter note. A dynamic marking *p* is visible.

Handwritten musical notation on a single staff. It begins with a circled 'E' and a dynamic marking *mf*. The staff contains a series of beamed eighth-note triplets. A circled 'E' is also present at the end of the staff.

Handwritten musical notation on a single staff. It starts with a quarter note, followed by a double bar line with a '2' above it, then a quarter note, another beamed eighth-note triplet, and ends with a quarter note. A dynamic marking *mf* is present.

Handwritten musical notation on a single staff. It features a quarter note followed by a beamed eighth-note triplet, then a quarter note, another beamed eighth-note triplet, and ends with a quarter note.

Four empty musical staves at the bottom of the page.



© M 10A*