

Ouverture pathétique

B \flat Trombone 2

Dmitri KABALEVSKY Op. 64

Arr. José SCHYNS

Allegro molto e appassionata $\text{♩} = 108 - 112$

1 *ff marc.*

9 *p*

29 *p cresc.* *f*

37 *mf*

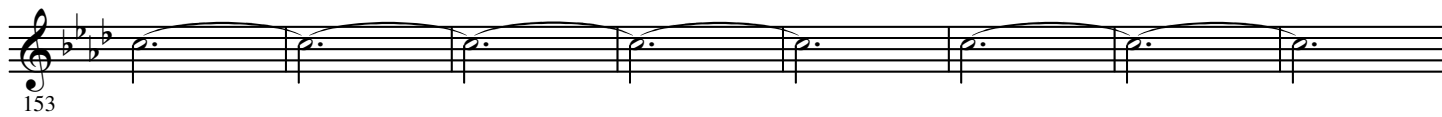
53 *mp cresc.* *ff*

67

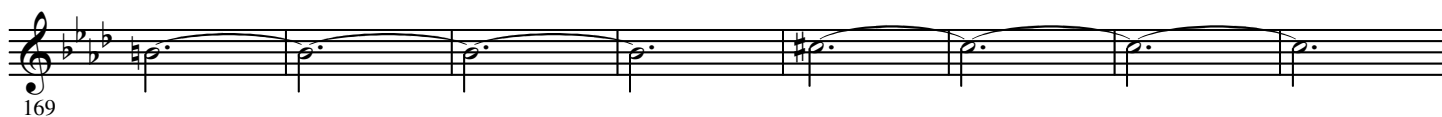
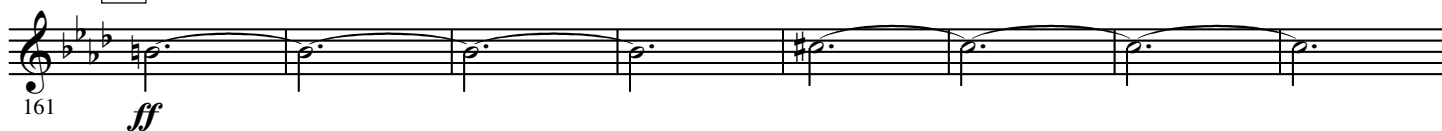
83 *ff*

110 *ff*

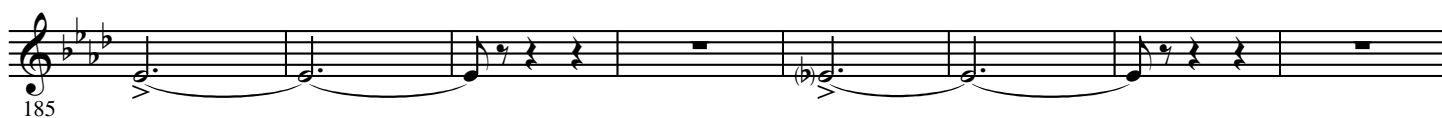
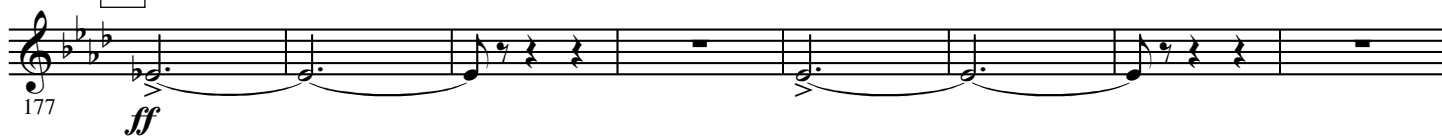
8



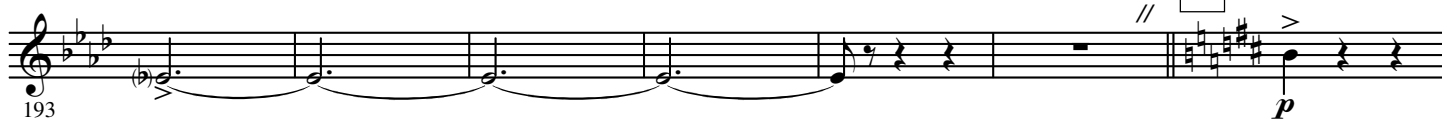
9



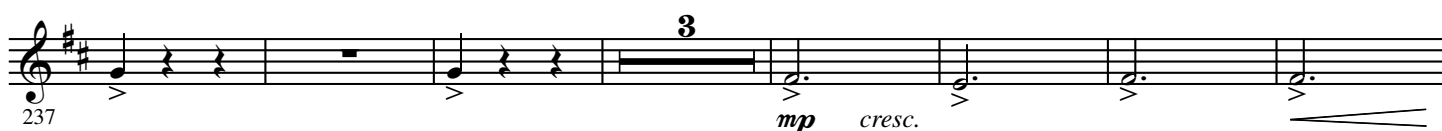
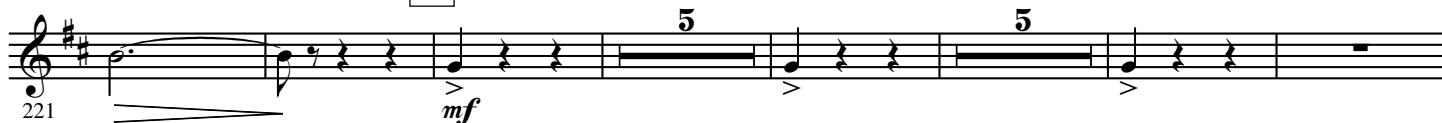
10



11



12



350

19

5

9

p

