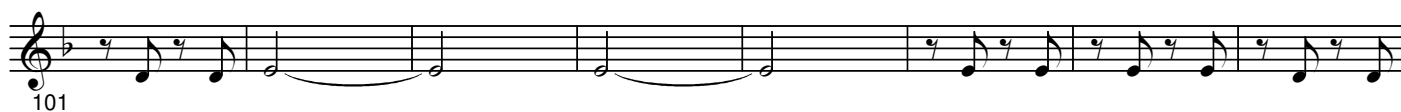
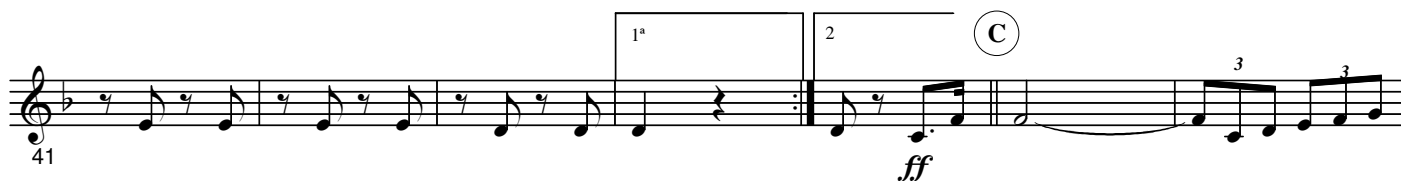
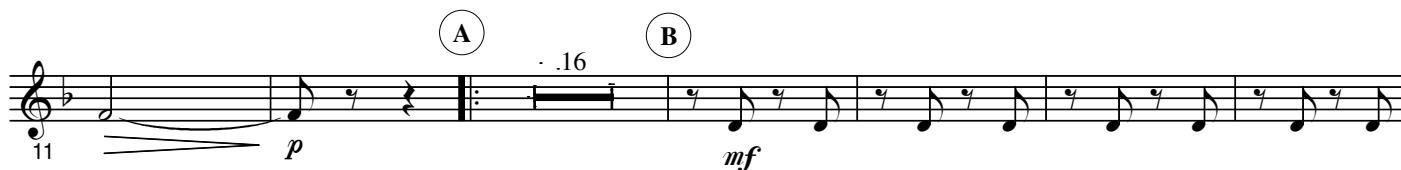


4th B $\flat$  Trombone

## CONCHIN Y CONCHI

Paso Doble

A. P. Perelló

Allegro moderato  $\text{♩} = 108$ 

## TRIO



(G)

118 *pp*

126

(H)

134

142

(I)

150 *ff*

(J) a tempo

157 *Poco rit* *f*

164

171

(K)

178

185

192