

# WALZER-ARIE N° 6

Trombone Solo

- Trombone & Wind Band -

Jos. Serafini-Alschausky

arr. José SCHYNS

Allegro risoluto  $\text{♩} = 72$



1

*pp*



9

*mf*



15

*rit.*

*mf*

**A** Piu lento  $\text{♩} = 100$



21

Piu largo



27

*rit.*

*f rit.*

**B** Allegro risoluto  $\text{♩} = 72$



33

*p*



39

*mf*



45

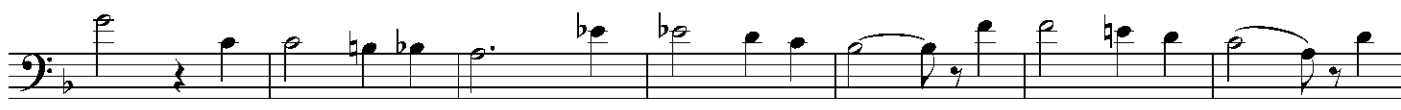
Piu lento  $\text{♩} = 100$

*rit.*

*mf*



51

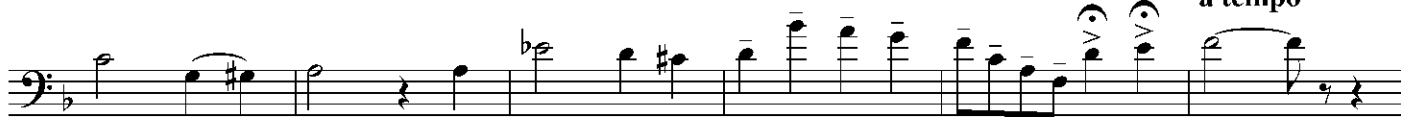


58

*p accel.*

*mf*

a tempo



65

*f*

*rit.*

*ff*

*rit.*

2.

- Trombone Solo -

**C** Allegro molto ♩. = 96

71 *rit.*

**D** a tempo calmato ♩. = 66

92 *p*

100 *p*

**E**

108 *p*

116 *p*

124 *pp*

132 *pp*

**F** Allegro ♩. = 72

132 *rit.*

**G**

**H** Meno mosso ♩. = 66

156 *ff*

176 *ff*

184 *mf*

192 *mf*

192 *mf*

200 J *f*

208

216 K L **Presto** ♩. = 80  
16 8 23 *accel.*

M **Meno mosso** ♩. = 66  
268 *ff*

276

N 284 *mf*

292

300 *f*

308 *Cadenza*

**Vivace** ♩. = 88  
314 *f* *ff*

323