

THE TSAR'S BRIDE

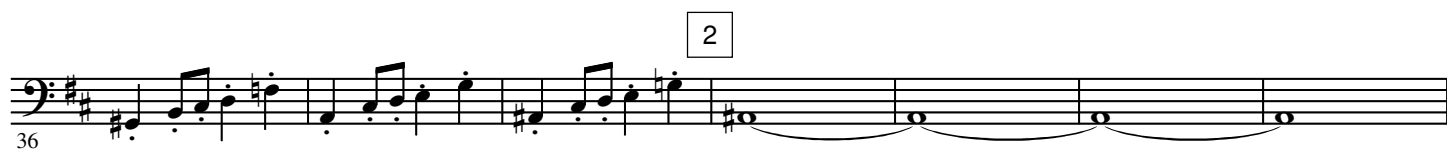
E♭ Bass

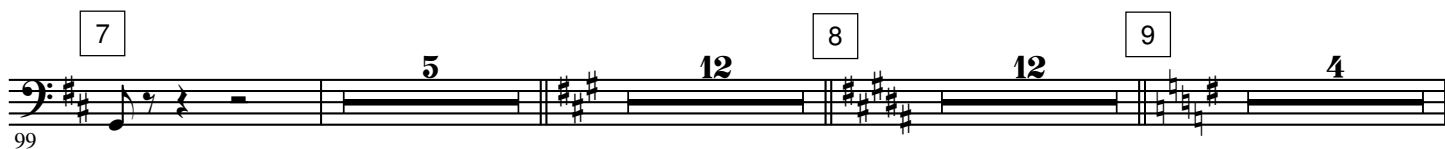
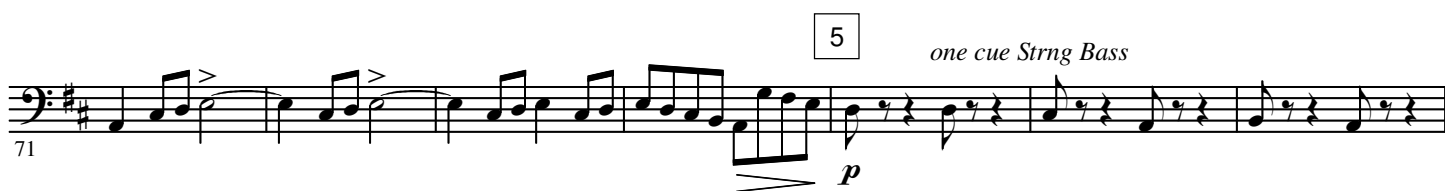
Overture

N. RIMSKY-KORSAKOV

Arr. José SCHYNS

Allegro ♩ = 108





10



11



12



13



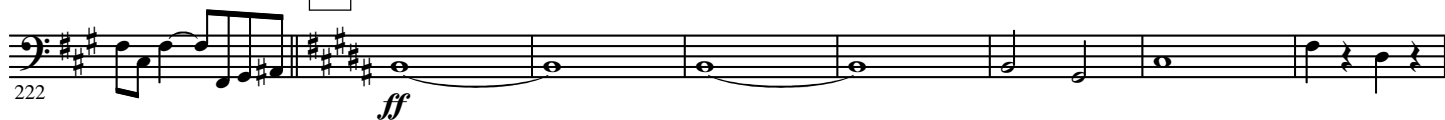
14



15



16



230

238

246

254

260 

266 

273

poco cresc.

mf dim.

pp

pp

281

289

297

305

The image shows a musical score for the bass line of the song 'The Rose Tree'. The score is written on a single staff with a bass clef and a key signature of two sharps (F# and C#). The melody begins with a half note G2, followed by a half note F#2, and then a half note E2. These three notes are connected by a slur. The next measure contains a quarter note D#2, a quarter note C#2, and a quarter rest. This is followed by a whole rest for two measures. The final measure of the excerpt shows a half note G2. The measure number '305' is printed below the first measure.