

Jules Verne on the moon

Horn in E♭ 4

Søren HYLDGAARD

Largo, misterioso ♩ = 56

A

4

mp *ff* *pp* *pp* *ff*

B

14

pp *fp* *ff*

C

8

mf

D

37 (no rit.) //

10

mf

E

poco rit.

2

F

A tempo

8

mf

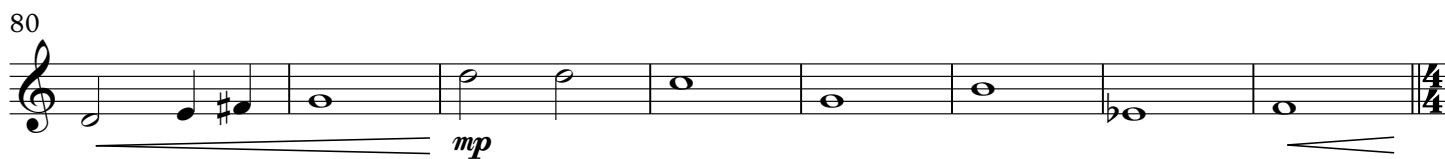
61

mf *p*

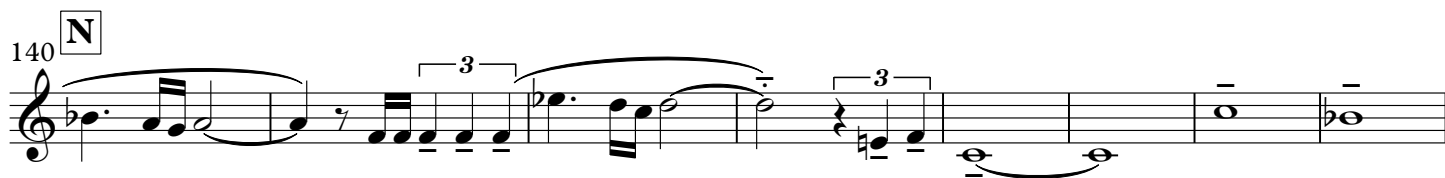
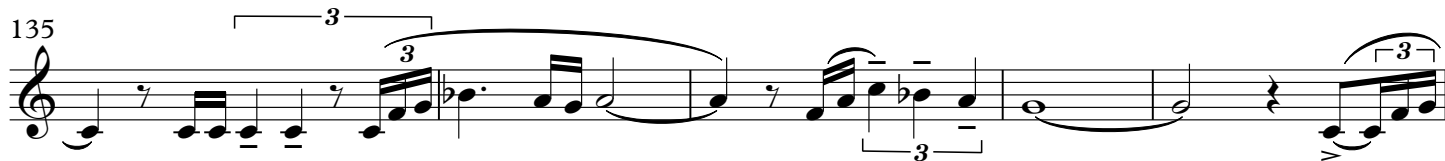
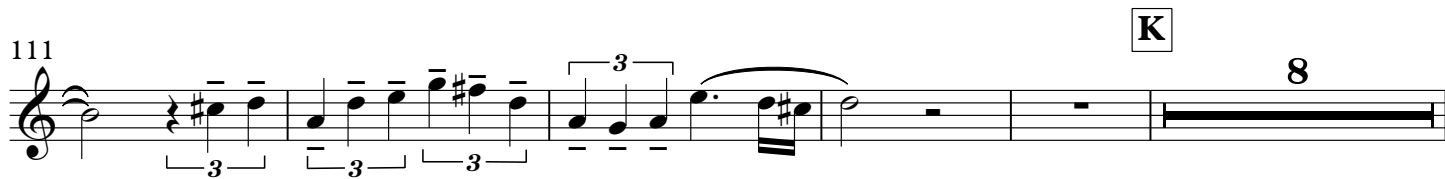
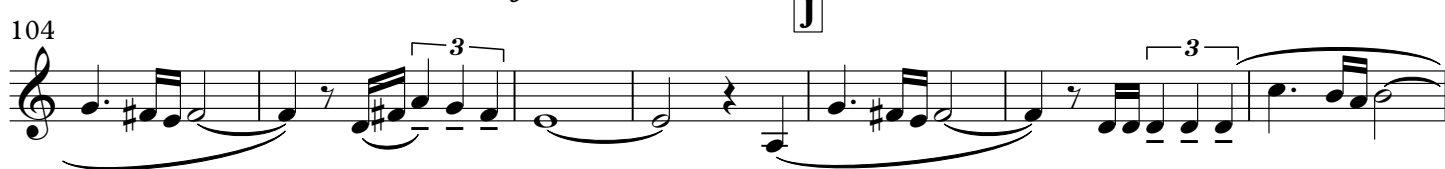
66

fp *ff*

72 **G** **Meno mosso** $\text{♩} = 48$



88 **H** **Allegro subito** $\text{♩} = 126$



148 **poco rit.**

153 **lunga //** **O** **A tempo** $\text{♩} = 126$ **P**

165

173 **Q** $\text{♩} = 130$

178 **R** **Maestoso** $\text{♩} = 116$
subito poco meno

184 **S**

191 **poco accel.** **T** $\text{♩} = 126$

198 **flz** **U**

205

208