

Jules Verne on the moon

Trombone 1 in Bb

Søren HYLDGAARD

Largo, misterioso $\text{♩} = 56$

A

B

C

D

E **A tempo**

F

G **Meno mosso** $\text{♩} = 48$

H **Allegro subito** $\text{♩} = 126$

I **Eroico**

J

K

L

M

14

33

51

72

84

95

114

120

128

mp *ff* *pp* *pp* *ff*

pp *mp* *ff* *p*

mf *no rit.* *poco rit.*

p *fp* *ff*

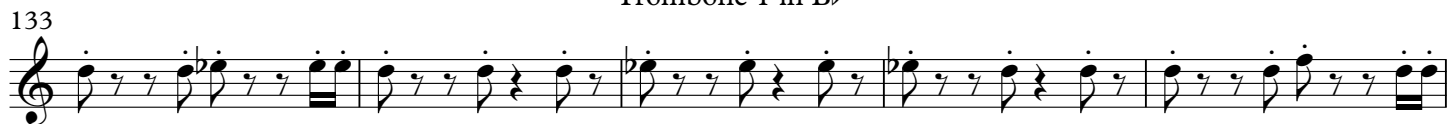
f *mp* *senza sord.*

mf *con sord.* *gliss.*

f

mf *(con sord.)*

sfz *f*

**N**