

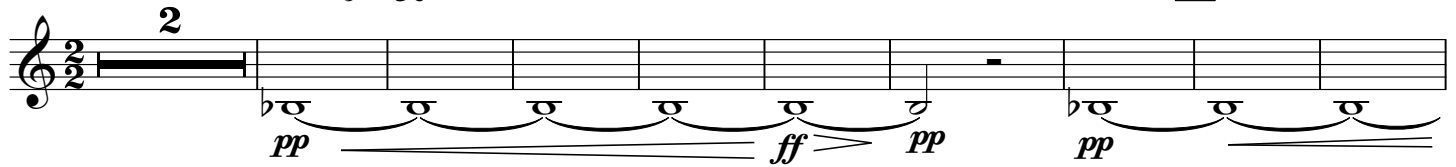
# Jules Verne on the moon

Horn in E♭ 3

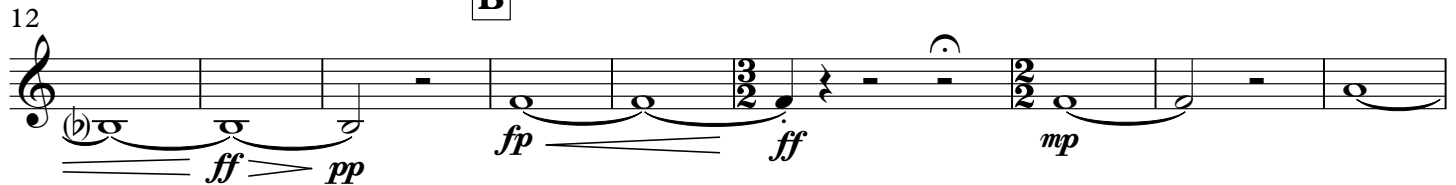
Søren HYLDGAARD

Largo, misterioso ♩ = 56

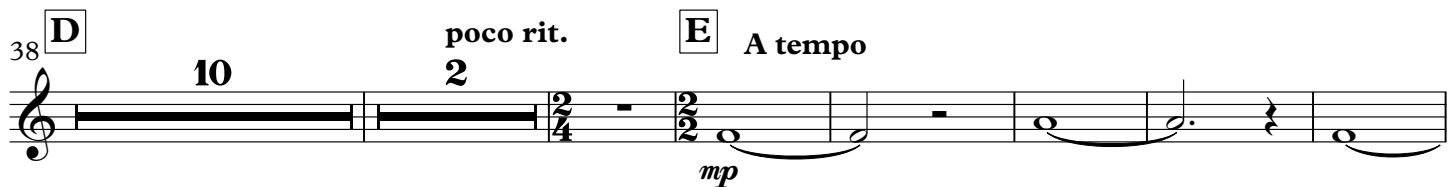
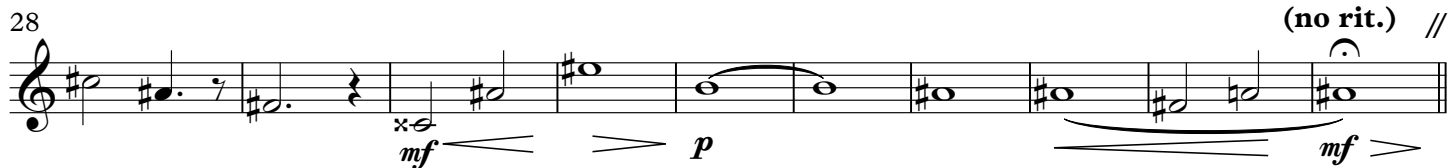
**A**



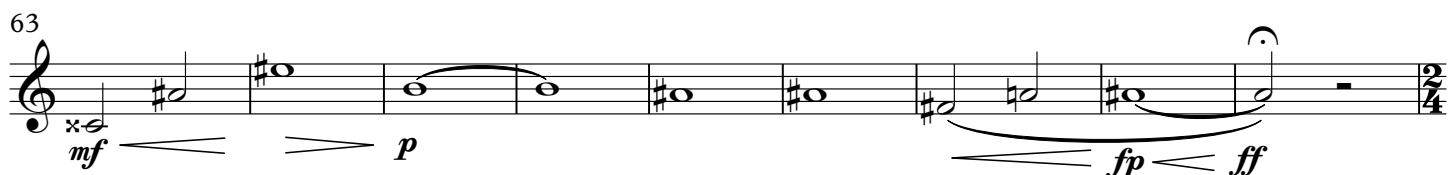
**B**

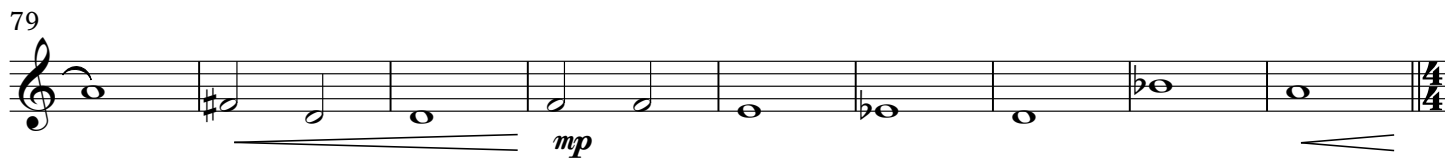
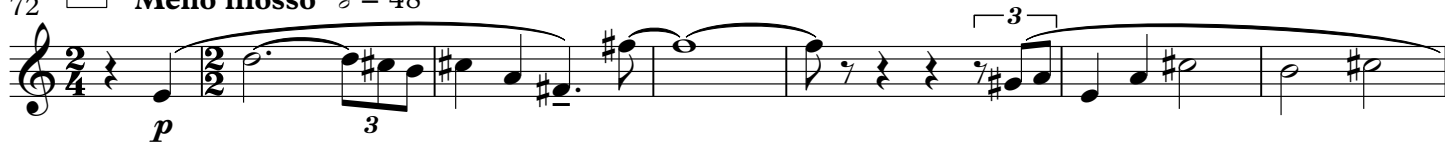
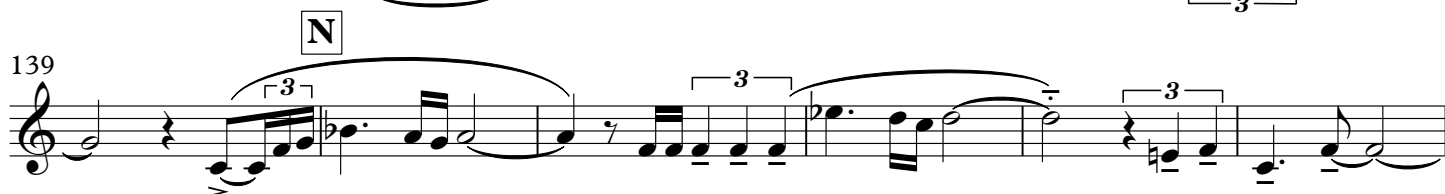
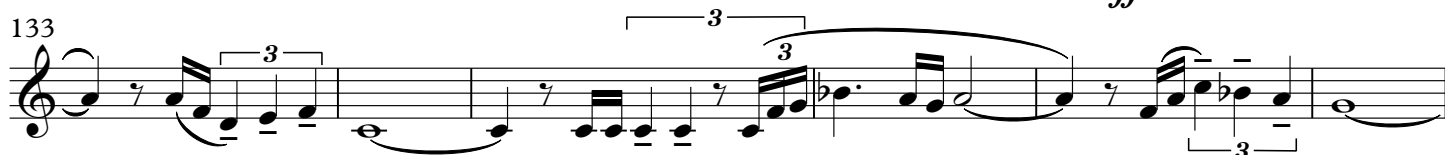
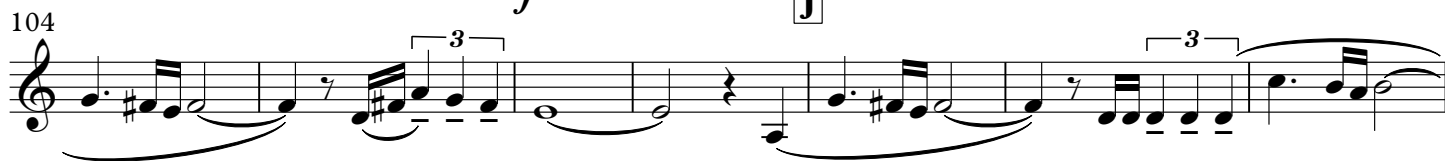


**C**



**F**



**G** **Meno mosso**  $\text{♩} = 48$ **H** **Allegro subito**  $\text{♩} = 126$ **I** **Eroico**

Horn in E $\flat$  3

145

*mf*

151

**poco rit.**

*mp* *p* *pp*

**lunga** //

**O** **A tempo**  $\text{♩} = 126$

**6**

161

**P**

*mp*

170

**Q**  $\text{♩} = 130$

*ff*

175

*mf* **<>** **sim.**

**6**

179

**R** **Maestoso**  $\text{♩} = 116$

**subito poco meno**

*f*

186

**S**

**poco accel.**

*f*

193

**T**  $\text{♩} = 126$

*ff* *fp*

**flz** **~~~~**

200

**U**

*ff* *fp* *ff* *fp* *ff* *fp*

**flz** **~~~~**

206

*ff* *mf* *sffz* *sffz*