

Wer ist Elise ?

1st Tuba in Eb

4 Szenen für Blasorchester

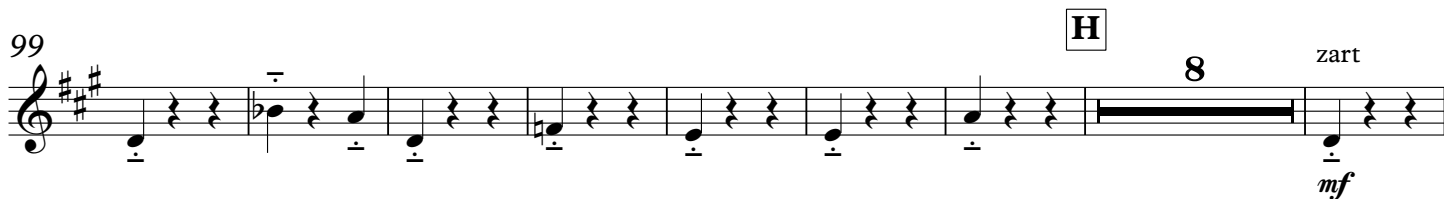
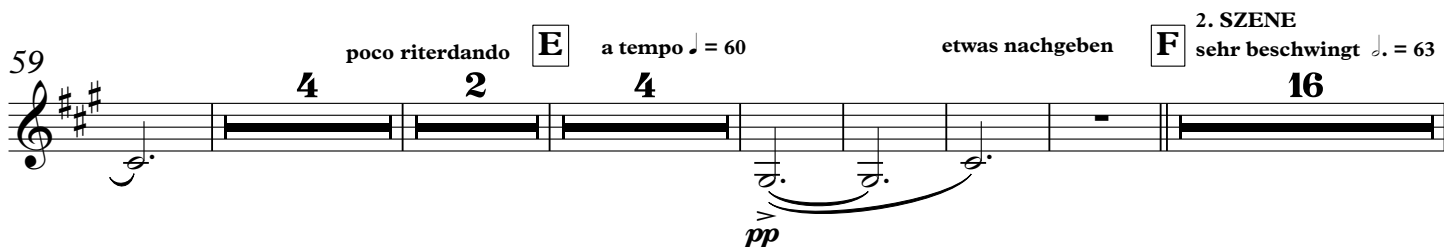
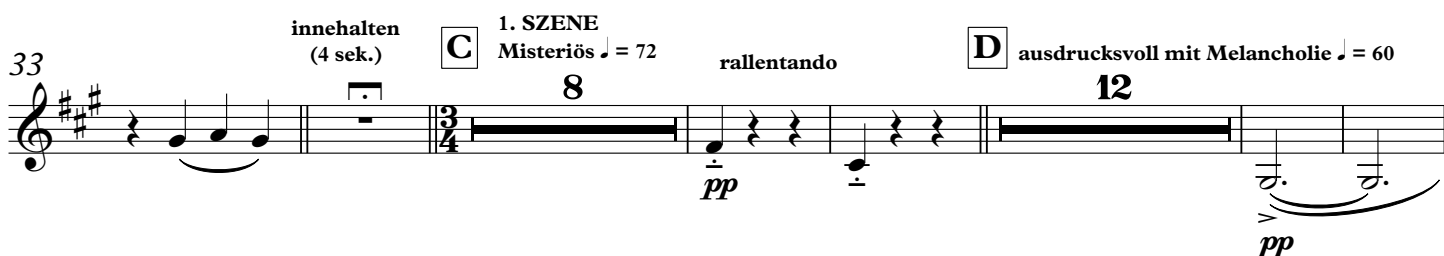
Johannes STERT

PROLOG

Majestätisch ♩ = 112

A

Kräftig aber schwungvoll



1st Tuba in Eb

125 **schneller** ♩ = 118 **innhaltend** ♩ = 74 **ritardando** **J** **striktes Tempo** ♩ = 84 **schneller** ♩ = 118

140 K wild

ff

150

mit voller Kraft

3 4 4 5 13

innehalten 5 sek

L

4. SZENE

sehr inniglich ♩ = 74

fff

3 4 4 5 13

[illegible]

202 ritardando O a tempo mit sehr großem Ausdruck molto ritardando P giocoso ♩ = 118

216 **EPILOG**
Majestätisch ♩ = 112 **R** kräftig und schwungvoll

4

ff

227

227

236

Exercise 236 is a short melodic phrase in treble clef, key of F# (three sharps), and 4/4 time. It consists of four measures. The first measure contains a half note A4 and a half note C5. The second measure starts with a quarter rest, followed by quarter notes G#4, A4, and B4. The third measure begins with an accented quarter note B4, followed by quarter notes A4, G#4, and F#4. The fourth measure contains a quarter note F#4, a half note E4, and a half note D4.

242

innehalten
(2 sek.)

S

flüchtig ♩ = 144
4

etwas gehalten ♩ = 120
6