

BLUES AND GOSPEL

Euphonium in B \flat BC

Luc GISTEL

Shuffle Blues $\text{♩} = 112$ 

A 2nd time

f *mf*

6

12

1. 2. 2.

B

19

f

26

mf *mf*

31

1. 2.

f

C **Gospel (fast)** $\text{♩} = 132$

37

mf

D

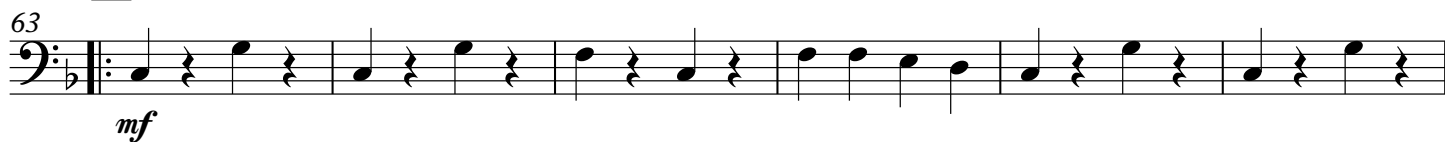
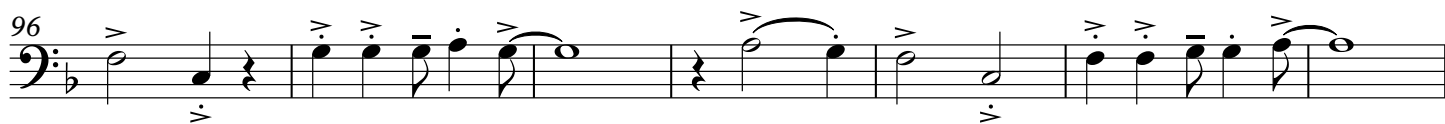
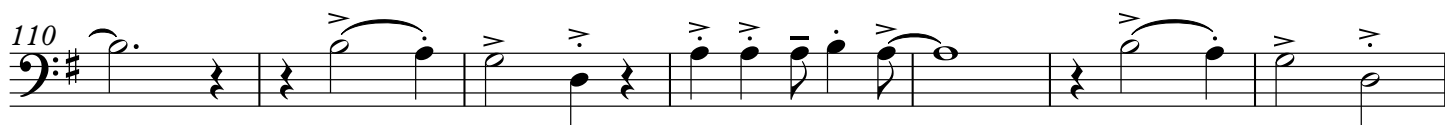
43

mf

50

57

1. 2.

E**F****G****H****I**