

# Crazy for you overture

E♭ Bass

George GERSHWIN

Arr. José SCHYNS

**Allegro con spirito** ♩ = ± 120

**A** ♩ = ♩

**B** ♩ = ♩ **allargando**

**Grandioso** ♩ = ± 72

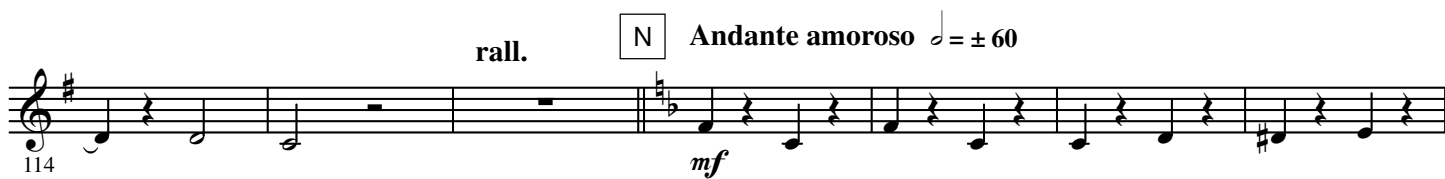
**C** **Fast and Rhythmic** ♩ = ± 132

**D**

**E**

**F** **Maestoso Moderato** ♩ = ± 132

**G** **Briskly** ♩ = ± 132



**molto rall.**  $\text{♩} = \pm 92$  **accel. e cresc.**

128

*mp*

This musical staff begins at measure 128. It starts with a whole note G $\flat$  (B $\flat$ 4) and a half note F $\flat$  (A $\flat$ 4). After a double bar line, it continues with a half note E $\flat$  (D $\flat$ 4), a quarter note D $\flat$  (C $\flat$ 4), a quarter note C $\flat$  (B $\flat$ 3), a quarter note B $\flat$  (A $\flat$ 3), a quarter note A $\flat$  (G $\flat$ 3), a quarter note G $\flat$  (F $\flat$ 3), a quarter note F $\flat$  (E $\flat$ 3), and a quarter note E $\flat$  (D $\flat$ 3). The staff concludes with a double bar line.

**P** **Swing 4**  $\text{♩} = \pm 120$

135

*f*

This musical staff begins at measure 135 in 4/4 time. It features a series of eighth notes: G $\flat$  (B $\flat$ 4), A $\flat$  (C $\flat$ 4), B $\flat$  (D $\flat$ 4), and C $\flat$  (E $\flat$ 4). This is followed by a triplet of eighth notes: D $\flat$  (F $\flat$ 4), E $\flat$  (G $\flat$ 4), and F $\flat$  (A $\flat$ 4). The staff continues with eighth notes G $\flat$  (B $\flat$ 4), A $\flat$  (C $\flat$ 4), B $\flat$  (D $\flat$ 4), and C $\flat$  (E $\flat$ 4), followed by another triplet of eighth notes: D $\flat$  (F $\flat$ 4), E $\flat$  (G $\flat$ 4), and F $\flat$  (A $\flat$ 4). The staff ends with a double bar line.

**Q**

140

*ff*

This musical staff begins at measure 140. It starts with eighth notes G $\flat$  (B $\flat$ 4), A $\flat$  (C $\flat$ 4), B $\flat$  (D $\flat$ 4), and C $\flat$  (E $\flat$ 4). This is followed by a triplet of eighth notes: D $\flat$  (F $\flat$ 4), E $\flat$  (G $\flat$ 4), and F $\flat$  (A $\flat$ 4). The staff continues with eighth notes G $\flat$  (B $\flat$ 4), A $\flat$  (C $\flat$ 4), B $\flat$  (D $\flat$ 4), and C $\flat$  (E $\flat$ 4), followed by another triplet of eighth notes: D $\flat$  (F $\flat$ 4), E $\flat$  (G $\flat$ 4), and F $\flat$  (A $\flat$ 4). The staff ends with a double bar line.

**R**

146

This musical staff begins at measure 146. It starts with eighth notes G $\flat$  (B $\flat$ 4), A $\flat$  (C $\flat$ 4), B $\flat$  (D $\flat$ 4), and C $\flat$  (E $\flat$ 4). This is followed by a triplet of eighth notes: D $\flat$  (F $\flat$ 4), E $\flat$  (G $\flat$ 4), and F $\flat$  (A $\flat$ 4). The staff continues with eighth notes G $\flat$  (B $\flat$ 4), A $\flat$  (C $\flat$ 4), B $\flat$  (D $\flat$ 4), and C $\flat$  (E $\flat$ 4), followed by another triplet of eighth notes: D $\flat$  (F $\flat$ 4), E $\flat$  (G $\flat$ 4), and F $\flat$  (A $\flat$ 4). The staff ends with a double bar line.

153

This musical staff begins at measure 153. It starts with eighth notes G $\flat$  (B $\flat$ 4), A $\flat$  (C $\flat$ 4), B $\flat$  (D $\flat$ 4), and C $\flat$  (E $\flat$ 4). This is followed by a triplet of eighth notes: D $\flat$  (F $\flat$ 4), E $\flat$  (G $\flat$ 4), and F $\flat$  (A $\flat$ 4). The staff continues with eighth notes G $\flat$  (B $\flat$ 4), A $\flat$  (C $\flat$ 4), B $\flat$  (D $\flat$ 4), and C $\flat$  (E $\flat$ 4), followed by another triplet of eighth notes: D $\flat$  (F $\flat$ 4), E $\flat$  (G $\flat$ 4), and F $\flat$  (A $\flat$ 4). The staff ends with a double bar line.