

Pikes Peak

1. COG RAILROAD

Tuba in B \flat

Adam GORB

Allegro Moderato ♩ = 80

1 3 2 4 5

18 2 3 7 2 4

34 4

41 5 3

51 6

59 7 Play lower notes if just 1 Tuba

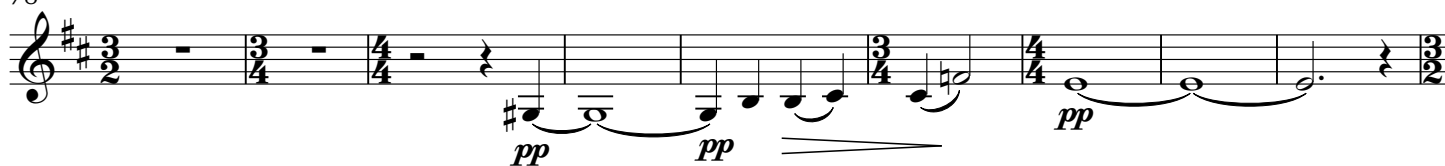
66 8 4

pp < *p* *pp* < *p* *p* < *mf* *p* *mf* *fp* *p* *p* *f* *f*

Tuba in B \flat

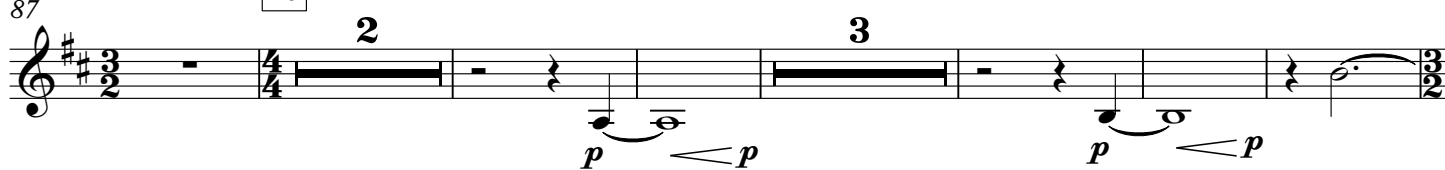
78

9



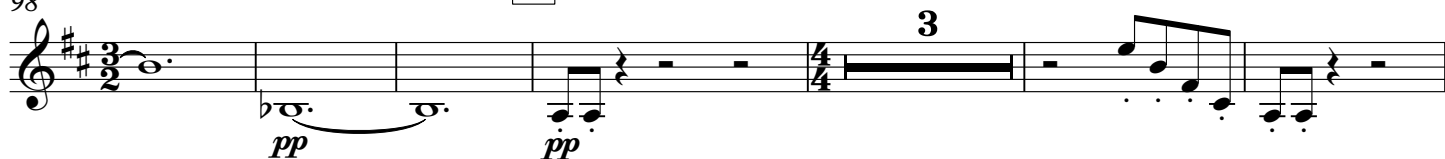
87

10



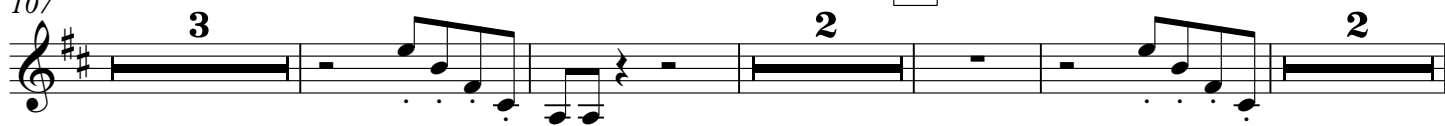
98

11



107

12



118

con sord.



2. CLIMB DANCE

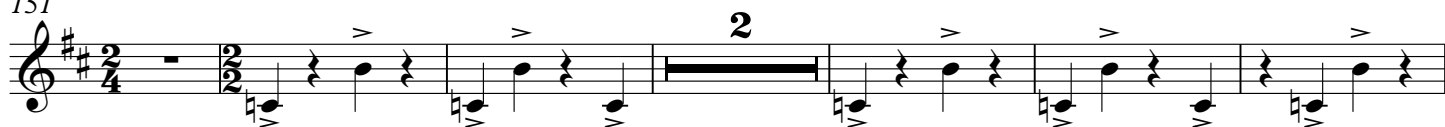
Presto $\text{♩} = 112 - 120$

13

senza sord.

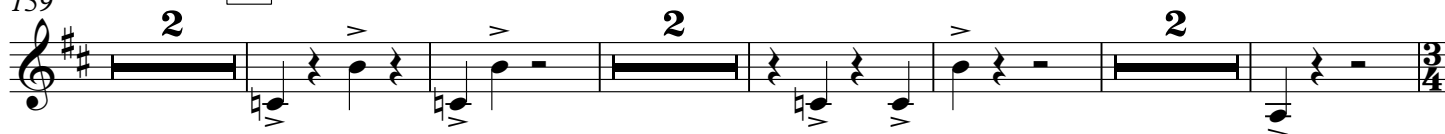


151



159

14



170

15



Tuba in B♭

178

16

3

2

The musical score for Example 178 is a single-measure rest in 2/2 time. The notation is on a single staff with a treble clef and a key signature of one sharp (F#). The time signature is 2/2. The rest is marked with a '16' in a box above it, indicating a 16-measure rest. The rest is divided into two parts: a 3-measure rest and a 2-measure rest, indicated by the numbers '3' and '2' above the staff. The rest is marked with a 'v' (accidentals) above it.

188

2

197 17

f *p*

204

18

f *p* *mf*

220

19

f \rightrightarrows *p*

mf

f

228 20

3

f

[illegible]

245 21

ff

253

VI

V

fff

Tuba in Bb
In Memory of David Maslanka 1943 - 2017

3. SUMMIT

Andante ♩ = 80

22

23

24

25

26

27

28

29

30

31

32

33

Meno mosso ♩ = 66