

Commissioned by HAFABRA Music and dedicated to Louis MARTINUS

LA FLEUR EN PAPIER DORÉ (THE GOLDEN PAPER FLOWER)

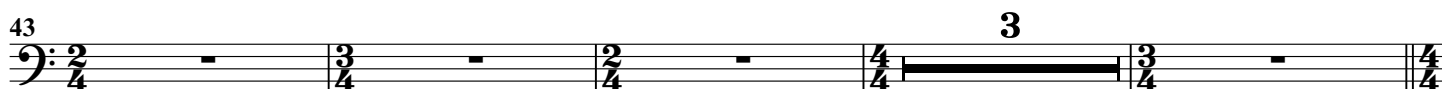
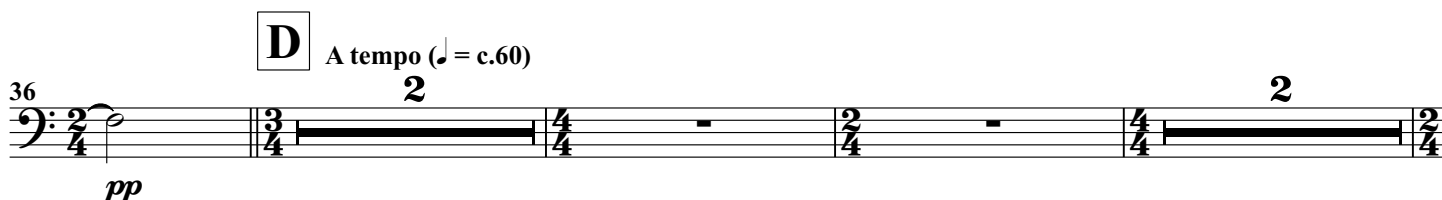
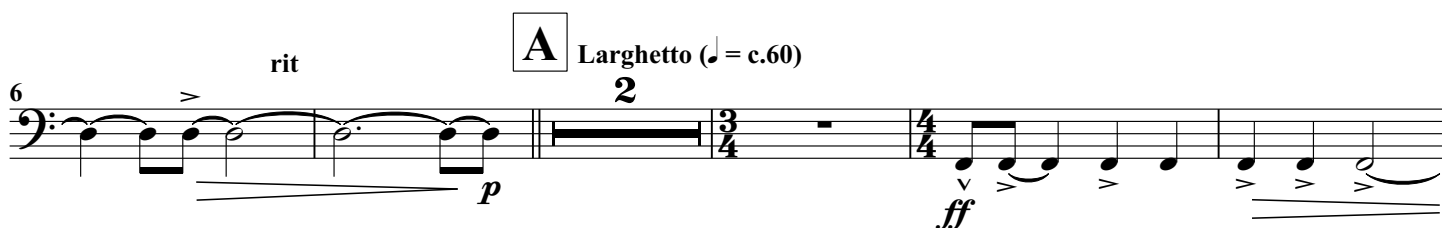
A surrealist fantasy for symphonic wind orchestra

B♭ Bass Trombone BC

Nigel CLARKE

I. LA LAMPE PHILOSOPHIQUE (THE PHILOSOPHER'S LAMP)

Allegro ♩ = c.132



B♭ Bass Trombone BC

E L'istesso Tempo
Quasi Marcia
senza sord.

50 *mp* *mf* *mp* *mf* **F** *ff* subito

G

55 *mf*

H Allegro ♩ = c.132

60 *p* *pp* *p* *mp* *f*

I Sonore
A tempo ♩ = c.60

65 *ff* *pp* rit.

74 *mp* *mf* *mp*

J **K**

82

L A tempo ♩ = c.60 rit. A tempo ♩ = c.60

89 *p* (con sord.) rit.

M Molto Ritmico

97 *mp* *mf* *mp* *mf* *ff*

Molto Ritmico

106 *p* Soli

B♭ Bass Trombone BC

N

II. L'ÉCHELLE DE FEU (THE LADDER OF FIRE)

Allegro ♩ = c.132

(Accents are in dynamic context!)

111 *subito, leggiero* **2** **2** *pp* *p*

O

Brutale!

118 *f*

123 *ff* *f*

128 *ff* *f*

132 *f* *ff*

Molto Brutale!

137 *ff*

P

142 *p* *ff*

Solo

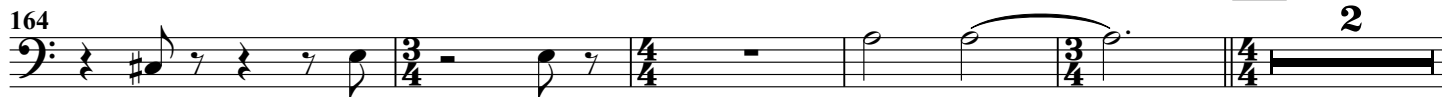
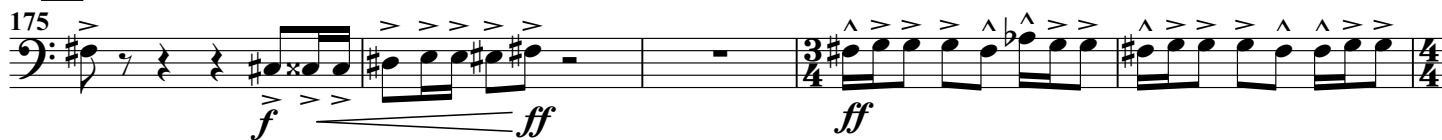
146 *p* *f*

150

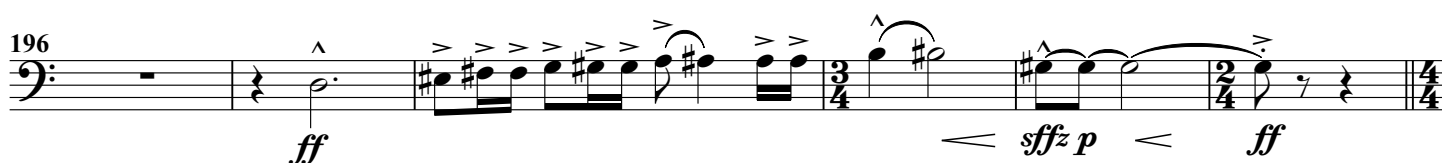
Q

154 *pp* *leggiero* **2** **4**

B♭ Bass Trombone BC

R**S****T****U**

(Brutale!)

**V**

Energico (Coda)

