

# PETITE SUITE FOLKLORIQUE

Trombone 2 in Bb

André WAIGNEIN

♩ = 92

A



9



B

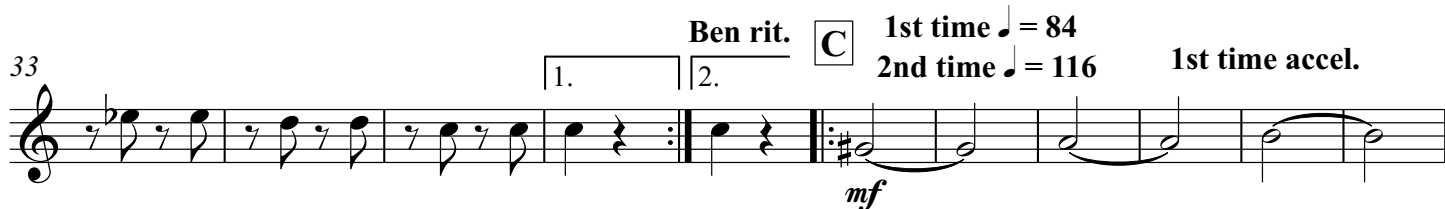
17



25



33

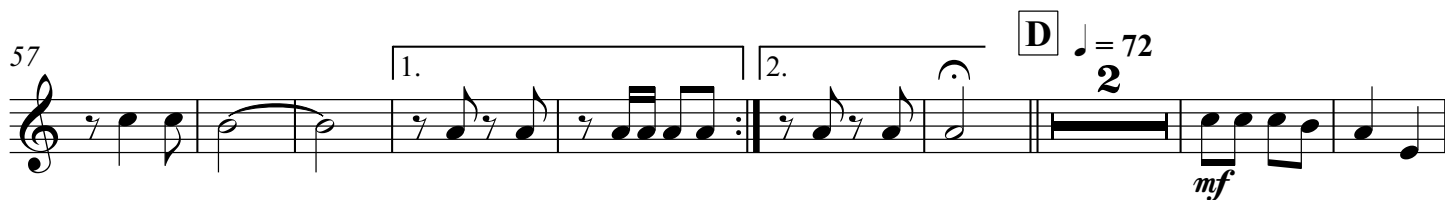


44

♩ = 116



57



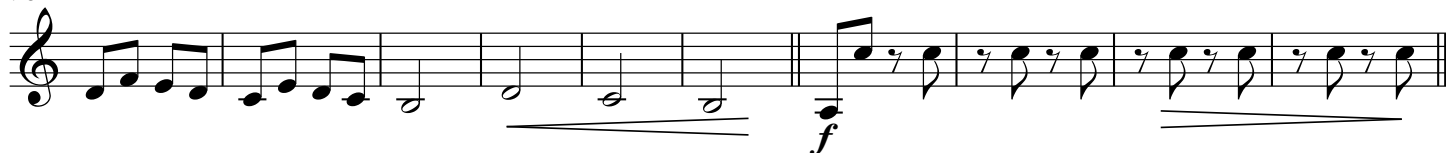
68



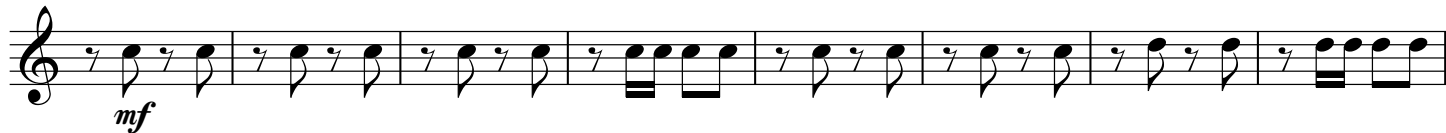
Trombone 2 in B $\flat$ 

2

78

**E** $\text{♩} = 92$ 

88



96



104

**F**

112

accel.

**G** $\text{♩} = 116$ 

122



135

**H**

142

