

An American in Paris

E♭ Bass

George GERSHWIN

Arr. José SCHYNS

Allegretto grazioso 1

7 3 4 2

1 *mf* *p* *f*

19 *p* *f* **Vigoroso** 3

27 *mf* **Giocoso** 4

34 5

42 *f* 6

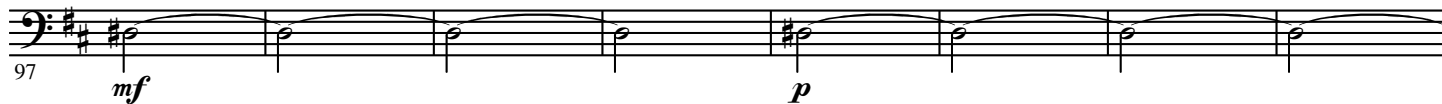
50 *p* 7

58 *p* *f* **Animando** **Brillante** 8

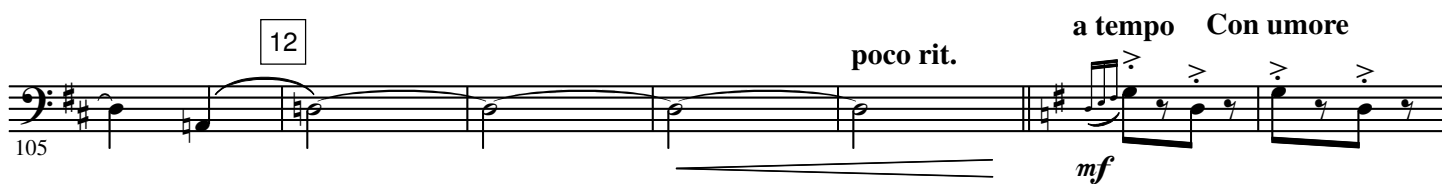
70 **Rit.** **a tempo** 5 9 **Grazioso** *p*

82 *f* *mf* 10 8

11



12



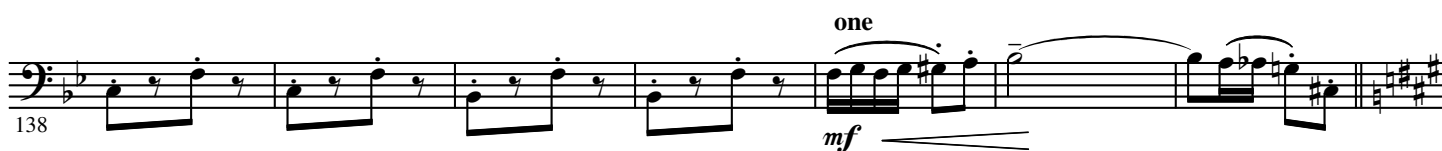
13



14



15



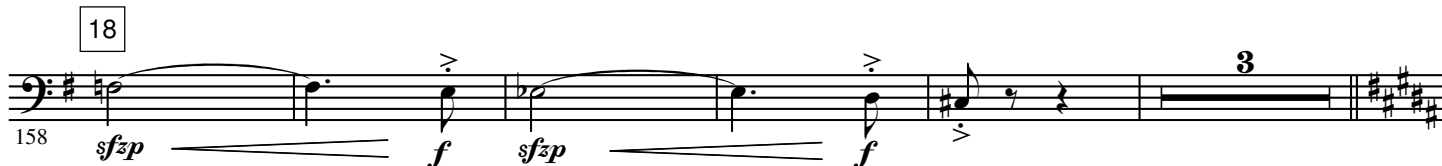
16



17 Giocososo



18



19 Molto meno mosso

poco accel.

20 a tempo Subito animato



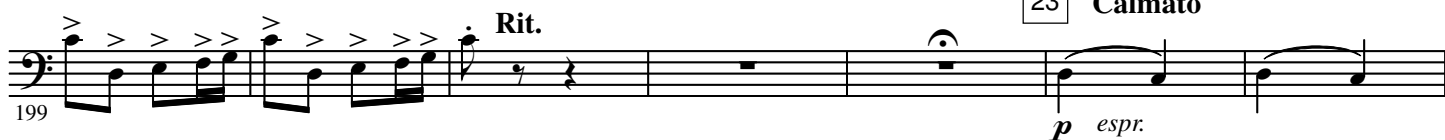
21



22 Con fuoco



23 Calmato

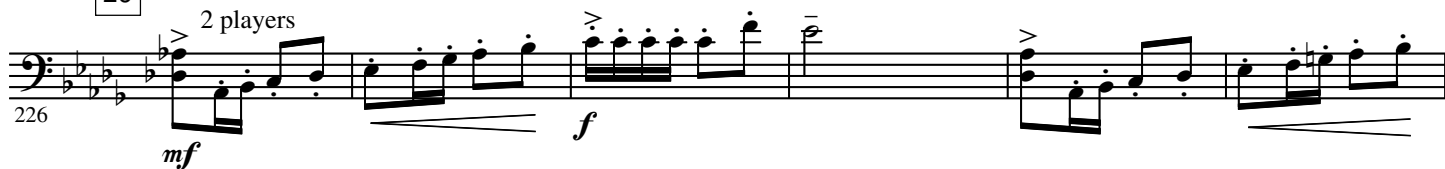


24

25 Più mosso



26 **Con moto**
2 players



27 **Un poco più agitato**
All



28 **Tranquillo**



ritard.

29 **Subito con brio**
div.



30



31



32



33



34 **Vigoroso**
div.



35 *div.*



297 36 *mf*

304 37 *p*

314 *f* *ff*

38 **Deciso** *mf* *f* *resoluto*

39 **Con fuoco** *mf* *f* *ff marcato*

40 **Più moderato a tempo** 5 3

41 **Deciso** *ff*

pochissimo rit. 2 42 **Calmato** *p*

359

43 **Assai moderato** 6 *poco rit.* 3

44 2 players

Più mosso e rubato

45

**Andante ma con ritmo deciso****All**

46

**Poco rubato**

47 a tempo

**poco rit.****Più mosso**

48

a tempo

49

Poco meno**poco accel.***marcato*

50

a tempo**poco rit.****a tempo - con moto**

51

**Poco meno****Deciso ma legato**

52



Con moto poco a poco stringendo

443 53

p *mf* *mf* *f*

This staff contains measures 443 to 449. It begins with a piano (*p*) dynamic and gradually increases to a forte (*f*) dynamic by measure 449. The tempo is marked 'Con moto poco a poco stringendo'.

450

Rit. a tempo

mf *f*

This staff contains measures 450 to 456. It starts with a measure of rest, followed by a ritardando (Rit.) leading into a measure of rest, and then continues at 'a tempo' with a mezzo-forte (*mf*) dynamic, reaching a forte (*f*) dynamic by measure 456.

455 54

Stringendo Agitato //

p *ff*

This staff contains measures 455 to 460. It starts with a piano (*p*) dynamic and increases to fortissimo (*ff*) by measure 460. The tempo markings 'Stringendo' and 'Agitato' are present, followed by a double bar line.

461 55

Grandioso Rit. molto rit. a tempo

ff 2

This staff contains measures 461 to 467. It begins with a fortissimo (*ff*) dynamic and a 'Grandioso' marking. It includes a ritardando (Rit.) and a 'molto rit.' section before returning to 'a tempo'. A fermata is placed over measures 466 and 467.

468 56

Calmato 2 players

f *pp*

This staff contains measures 468 to 472. It starts with a forte (*f*) dynamic and ends with a pianissimo (*pp*) dynamic. The marking 'Calmato 2 players' is present.

473 57

Allegro All div.

p 7

This staff contains measures 473 to 485. It begins with a piano (*p*) dynamic and a 7-measure rest. The tempo is marked 'Allegro All div.'.

486

This staff contains measures 486 to 492, featuring a series of chords.

493 58

mf

This staff contains measures 493 to 508. It begins with a mezzo-forte (*mf*) dynamic and features a series of chords.

499 59

mf 4

This staff contains measures 499 to 508. It starts with a mezzo-forte (*mf*) dynamic and ends with a 4-measure rest.

509 60

mf 2 Rit.

This staff contains measures 509 to 518. It begins with a mezzo-forte (*mf*) dynamic and ends with a 2-measure rest followed by a ritardando (Rit.) marking.

61 a tempo



62



poco rit.

63

a tempo

*ff marc.*

64



div.

poco a poco rall.



65 Grandioso



570 66 **Largo**



575 67 **a tempo**



582 68 **Allegretto**



Moderato con grazia
All 69 **Allegretto giocoso**

593



600



607



70

613



71 **All**

622



72

636 **f** 73 **div.**

643 **p** 74 **mf**

652 **cresc.** **f** 75

660 **ff** 76 **Meno mosso Grandioso**

667 **p** **f** 77 **Presto** **3**

676 **Largo** **2** **Più mosso** **ritenuto** **f** **ff**