

# FIESTA Y FLORES

Horn in E♭ 4

Jordi RIPOLL

♩ = 112



23



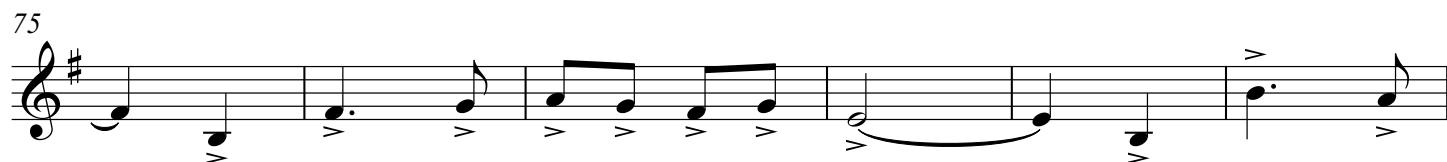
39



55



70



81

81-90: Musical staff with treble clef and key signature of one sharp (F#). It contains eighth and sixteenth notes, some beamed together. A triplet of eighth notes is marked with a '3' above it. The staff ends with a half note and a dynamic marking of *p* (piano).

91

92

91-100: Musical staff with treble clef and key signature of one sharp (F#). It contains eighth notes, some beamed together. A dynamic marking of *p* (piano) is present at the beginning.

100

108

100-109: Musical staff with treble clef and key signature of one sharp (F#). It contains eighth notes, some beamed together.

109

109-116: Musical staff with treble clef and key signature of one sharp (F#). It contains eighth notes, some beamed together. The key signature changes to two sharps (F# and C#) starting at measure 114.

117

rit.

117-125: Musical staff with treble clef and key signature of two sharps (F# and C#). It contains eighth notes, some beamed together. The staff ends with a half note and a dynamic marking of *f* (forte).

126

128

A tempo

126-134: Musical staff with treble clef and key signature of two sharps (F# and C#). It contains eighth notes, some beamed together. A dynamic marking of *f* (forte) is present at the beginning.

135

135-142: Musical staff with treble clef and key signature of two sharps (F# and C#). It contains eighth notes, some beamed together.

143

144

143-151: Musical staff with treble clef and key signature of two sharps (F# and C#). It contains eighth notes, some beamed together. The key signature changes to one sharp (F#) starting at measure 147.

152

152-158: Musical staff with treble clef and key signature of one sharp (F#). It contains eighth notes, some beamed together. The staff ends with a double bar line.