

Phoenix Ascending

Trombone 1 in B \flat B C

Rossano GALANTE

$\text{♩} = 146$ - Con Fuoco

5 *sfz* *f*

10 *sfp* *ff* *f* Brassy

14

17 *mf*

22

25 *f*

34

33

42

41 *mf* *<*

50 *f*

58

66

57

74

67

Trombone 1 in B \flat B C

77 82

mp *mf* *f* *ff* *mf*

83

88 90

f

95 96

mf *f*

102 107

ff *p*

111 117 rit.

$\text{♩} = 72$ - Espressivo 125 133

121 142

mf

138 151

f

147 158

$\text{♩} = 146$ - Con Fuoco

ff *mf* *f*

Trombone 1 in B \flat B C

166



174

*mf*

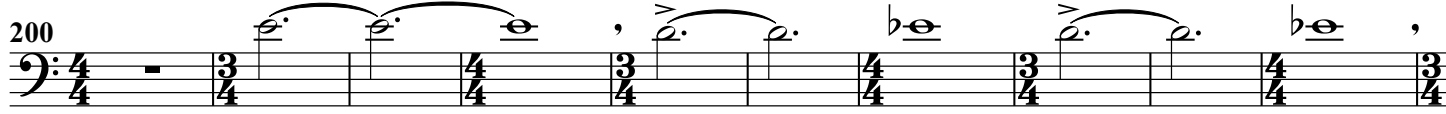
182

*f*

190

*mf < f*

198

*mf**mf**f*

210



rit.

217

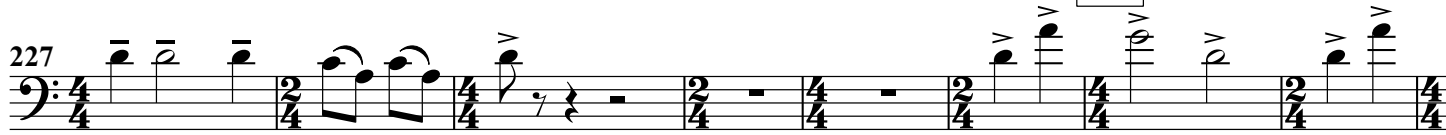
♩ = 110

sfp < f

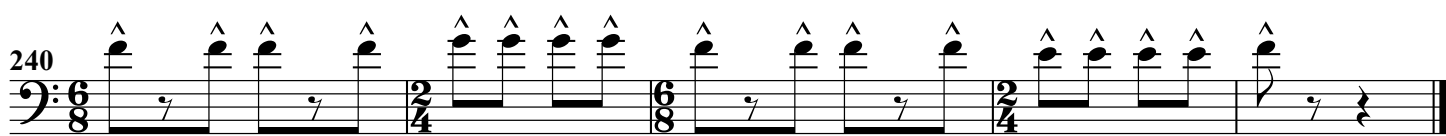
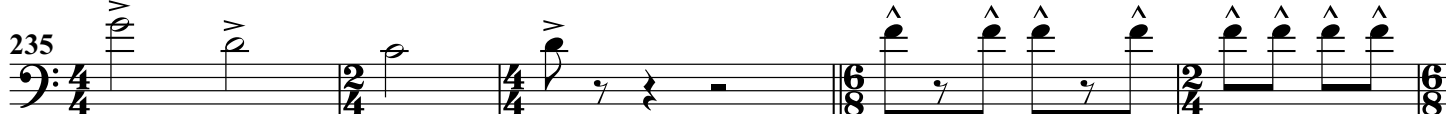
225



233



♩ = 146 - Con Fuoco

*ff*