

Phoenix Ascending

Trombone 3 in B \flat B C

Rossano GALANTE

$\text{♩} = 146$ - Con Fuoco

5

sfz *f*

10

sf *ff* *f* Brassy

14

17

mf

22

25

f

34

42

mf

50

f

58

66

57

74

67

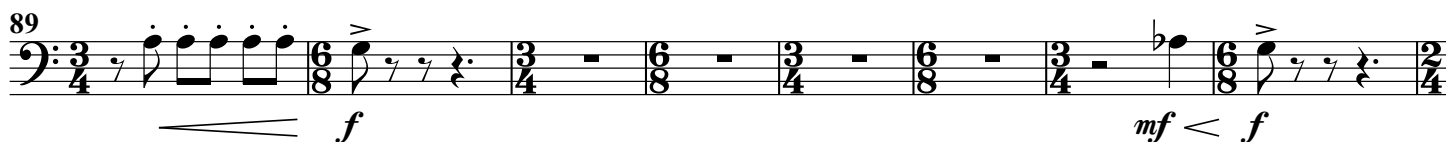
Trombone 3 in B \flat B C

82

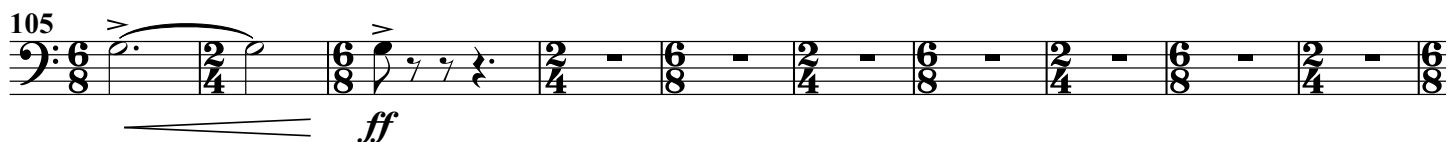


90

96



107



117 rit.

♩ = 72 - Espressivo

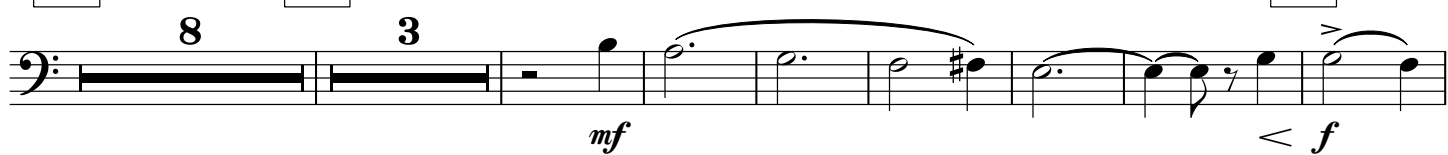
2



125

133

142



151

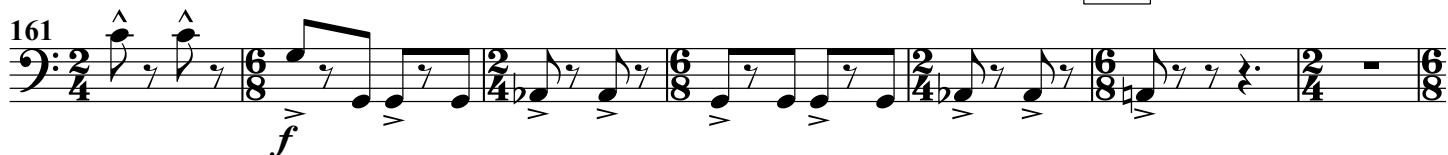


158

♩ = 146 - Con Fuoco



166



Trombone 3 in B \flat B C

168 174

mf

175

f

182

181

mf < f

190

mf

198

196

mf

210

204

f

rit.

217 $\text{♩} = 110$

214

sfp < f

225

223

233

231

$\text{♩} = 146$ - Con Fuoco

238

241

ff