



B \flat Tuba

Refugees

Lyrics: Jacques AUSSEMS

Music: Hardy MERTENS

$\text{♩} = \pm 50$

1 12 12 12 3

mf

39

44 *pp*

4 12 5 2

ff

67 6 2 2

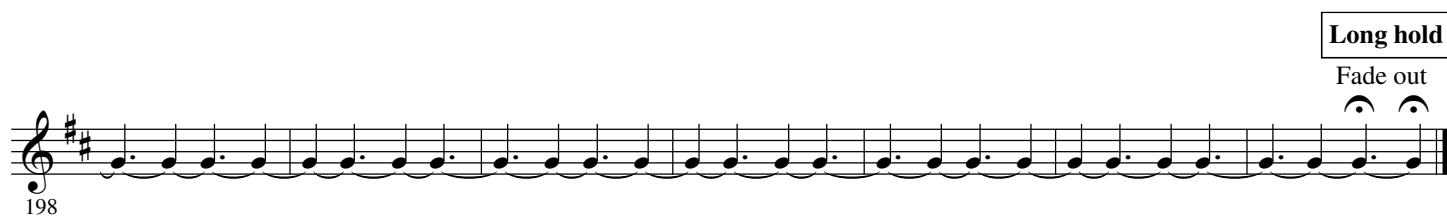
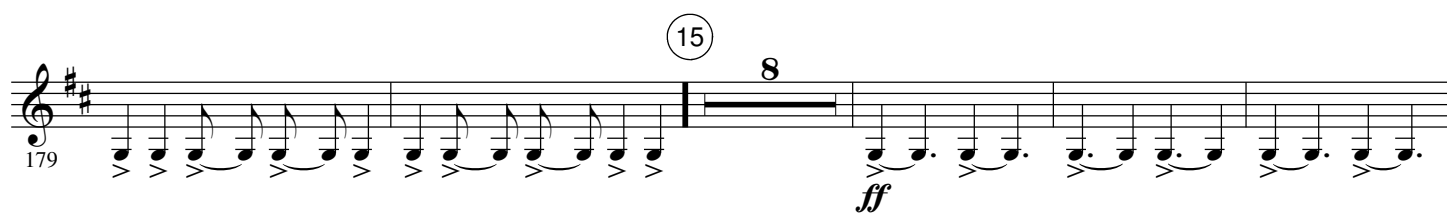
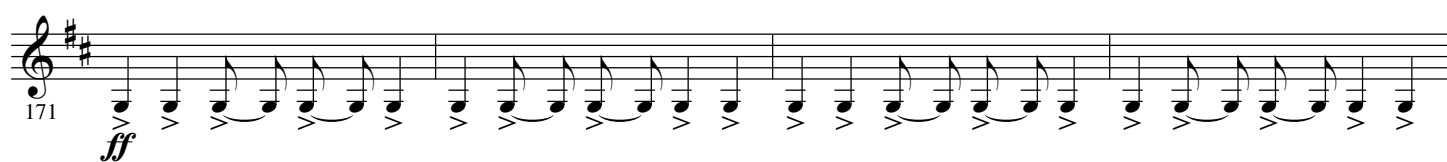
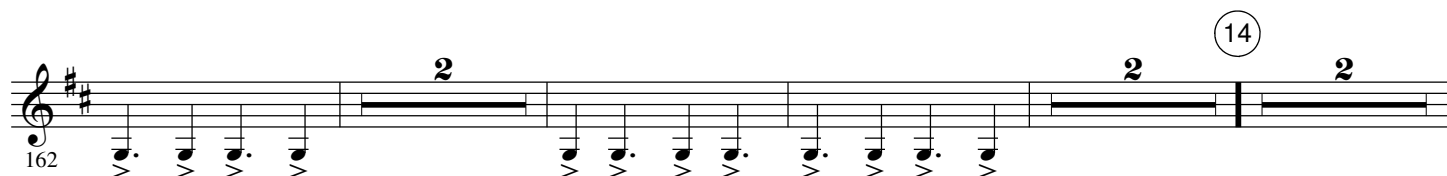
76 2

82 7 12 8 12 9 12

10 12 11

mf

121



B \flat Tuba

Refugees

Lyrics: Jacques AUSSEMS

Music: Hardy MERTENS

♩ = ± 50

1 12 12 12 3

1

mf

39

44

pp

4 5 2

49

ff

2 2 6 2

67

2

76

7 12 8 12 9 12

82

10 11

121

mf