

# Parfum de découvertes

B $\flat$  Trombone 1

Alexandre KOSMICKI

$\text{♩} = 60$

Cup mute

*p*

8 **A** 9

Open

*mf dolce* *f poco*

23 **B**

*mf* *f poco*

28 **C**

*f* *mf* *f* *mf*

34

*ff* *mf*

39 **D** *più mosso*  $\text{♩} = 96$

Cup mute

2 5

*p* *mf* *p* *mf* *p*

50 Cup mute *mf* Open *mf* > *mp* *mf* > *mp*

57 **E** *f*

61

64

67 *fp*

70 **F** *f* 6 *f* *mf*

79 *f* *mf* *f*

82 **G** **H**  $\text{♩} = 192$  (doppio tempo) *mp* *f*

94

101

108 I ♩ = 96

*ff* *f* *ff* *f* *ff*

114 *f*

118 *f*

129 (Senza rall.) J subito ♩ = 68 *allargando* Cup mute ♩ = 50 c. *p*

*fp* *ff* *mf*

136 *pp*

K più mosso ♩ = 48 c. *accel.* *molto rall.* L ♩ = 60 M *Giocosso* ♩ = 126 (Cup mute) *pp*

162

173 Open N *f* *ff* *f*

180 O *f* 12

196 *mp* *mf*

201 **P** *f* *mf* *f*

206 **Q** *ff* *f*

211 *ff* *f*

217 **R** *fz* *mf* *mf* *f*

222 *fz* *mf* *ff* **S** 4

230 *f* *f* 2

**T** 15 *f* **U** 2 2 *mp*

260 *mf* *p* Straight mute

266 V Open

273

mf 3 3

Detailed description: Musical staff 266-273. Key signature: one sharp (F#). Time signature: 4/4. Measure 266 starts with a treble clef. The staff contains eighth notes, quarter notes, and rests. There are two measures with a '2' above them, indicating a second ending or a specific articulation. The staff ends with a triplet of eighth notes marked 'mf'.

274

282

mp mf mp mf mp

Detailed description: Musical staff 274-282. Key signature: one sharp (F#). Time signature: 4/4. Measure 274 starts with a treble clef. The staff contains eighth notes, quarter notes, and rests. There are two measures with a '3' above them, indicating a triplet. The staff ends with a triplet of eighth notes marked 'mp'.

283 W

288

mf mp p

Detailed description: Musical staff 283-288. Key signature: one sharp (F#). Time signature: 4/4. Measure 283 starts with a treble clef. The staff contains eighth notes, quarter notes, and rests. There are two measures with a 'W' above them, indicating a whole note. The staff ends with a triplet of eighth notes marked 'p'.

289

294

mp

Detailed description: Musical staff 289-294. Key signature: one sharp (F#). Time signature: 4/4. Measure 289 starts with a treble clef. The staff contains eighth notes, quarter notes, and rests. The staff ends with a triplet of eighth notes marked 'mp'.

295

308

mp mf f

Detailed description: Musical staff 295-308. Key signature: one sharp (F#). Time signature: 4/4. Measure 295 starts with a treble clef. The staff contains eighth notes, quarter notes, and rests. There is a measure with a '9' above it, indicating a ninth note. The staff ends with a triplet of eighth notes marked 'f'.

309

313

mf f mf f mf

Detailed description: Musical staff 309-313. Key signature: one sharp (F#). Time signature: 4/4. Measure 309 starts with a treble clef. The staff contains eighth notes, quarter notes, and rests. There are two measures with a '3' above them, indicating a triplet. The staff ends with a triplet of eighth notes marked 'mf'.

314 X Y

327

f mf f mf ff

5 4 2/4

Detailed description: Musical staff 314-327. Key signature: one sharp (F#). Time signature: 4/4. Measure 314 starts with a treble clef. The staff contains eighth notes, quarter notes, and rests. There are two measures with a '3' above them, indicating a triplet. The staff ends with a triplet of eighth notes marked 'ff'. There are also measures with '5' and '4' above them, indicating a fifth and fourth note respectively. The time signature changes to 2/4 at the end.

328

333

f mf f mf fp f

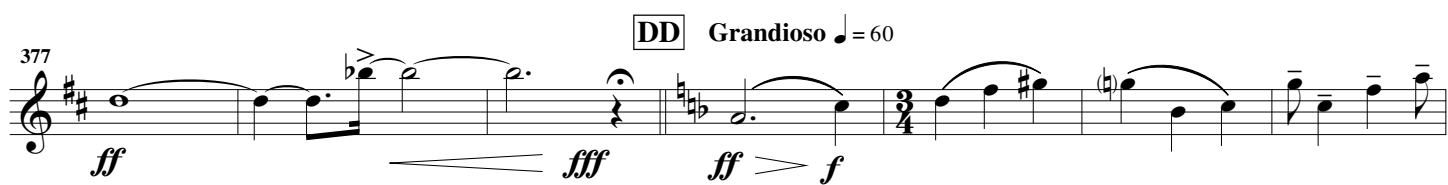
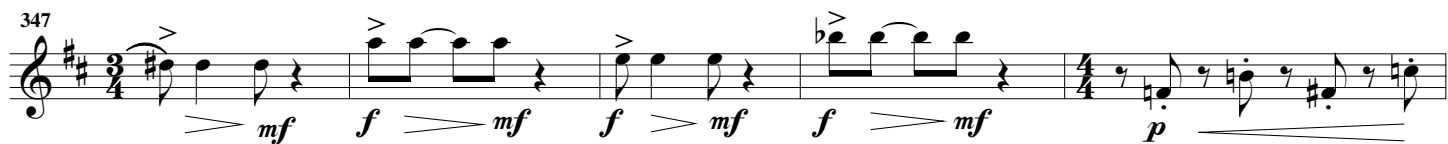
Detailed description: Musical staff 328-333. Key signature: one sharp (F#). Time signature: 4/4. Measure 328 starts with a treble clef. The staff contains eighth notes, quarter notes, and rests. The staff ends with a triplet of eighth notes marked 'f'.

334

339

mf 3

Detailed description: Musical staff 334-339. Key signature: one sharp (F#). Time signature: 4/4. Measure 334 starts with a treble clef. The staff contains eighth notes, quarter notes, and rests. The staff ends with a triplet of eighth notes marked 'mf'.



**FF** subito  $\text{♩} = 176$

396

*poco rit.*  
*flatt.*

**GG** poco meno  $\text{♩} = 156$

406