

CALABRIA EVOLUTIONS

Horn in E \flat 2

André WAIGNEIN

$\text{♩} = 80$

ff

9 17 8

mf

21

mf *ff*

27 33 $\text{♩} = 88$

mf

35 37 45 8

mf *p*

50

p *mf*

60 Ben ritenuto 65 A tempo

p *mp*

73 77 $\text{♩} = 132$

f *mf*

83

90



99



105



115



124



128



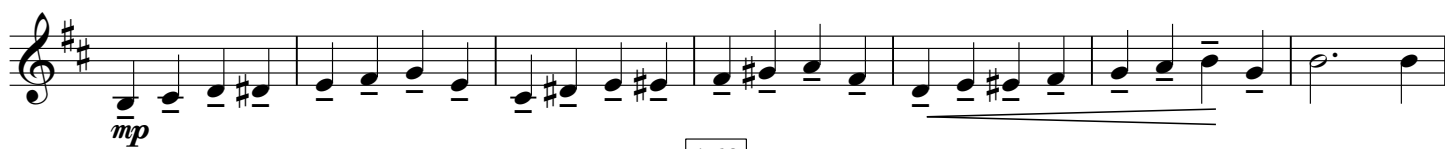
138



146



154



163



168

