

B \flat Euphonium

DON QUIXOTE

Wind Band

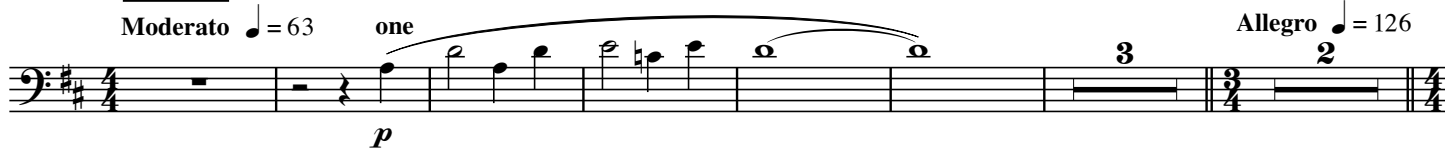
Jean-Pierre HAECK

Prologue

Moderato $\text{♩} = 63$

one

Allegro $\text{♩} = 126$



Moderato $\text{♩} = 63$

one cue B. Cl.

A

Allegro $\text{♩} = 132$

Play All



Don Quixote, preux chevalier

one cue Hrn. 3



B

Play All



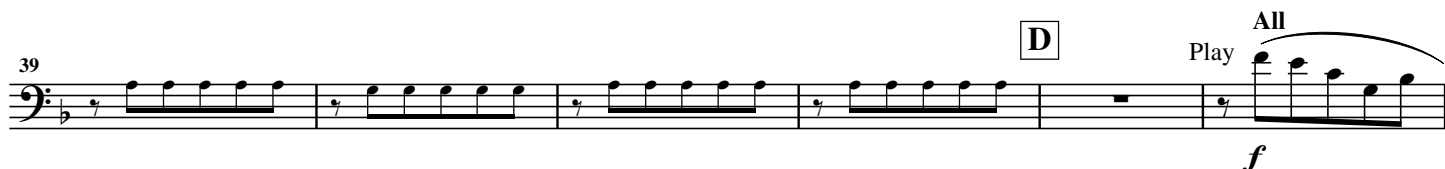
C

one cue Trb. 3



D

Play All



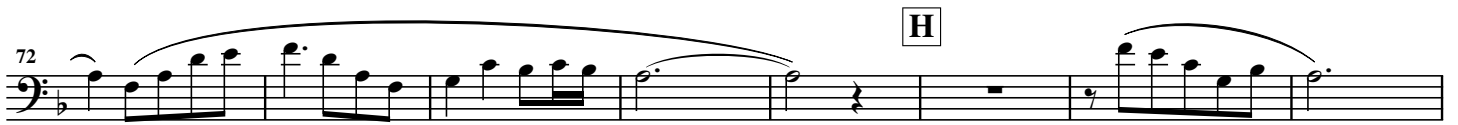
E



F

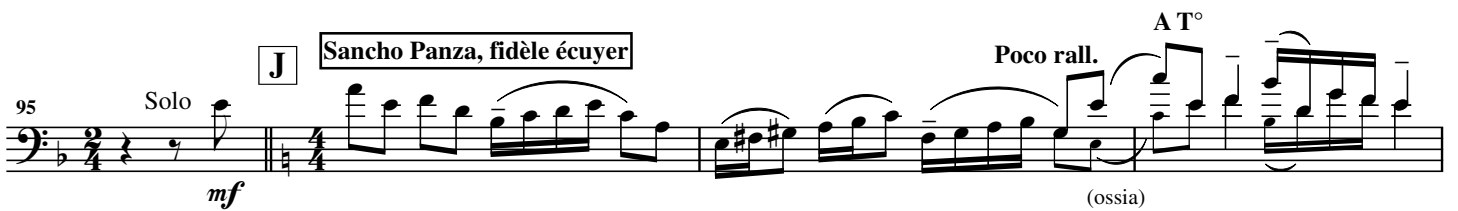


65  **G**
f

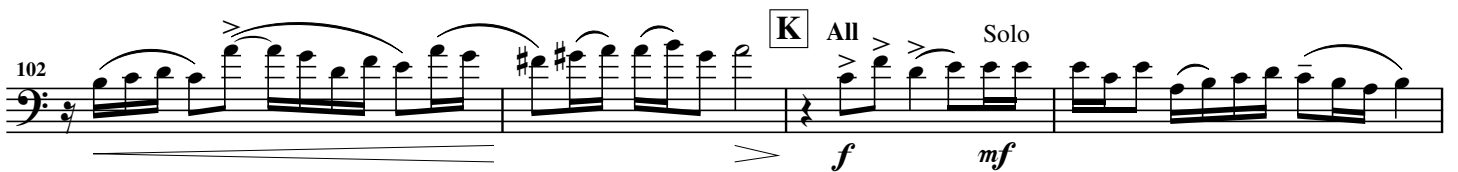
72  **H**

80 

87 **Rall.** **I** **Adagio** ♩ = 63 **one** **Pomposo**
 *mf* *mf* *p*

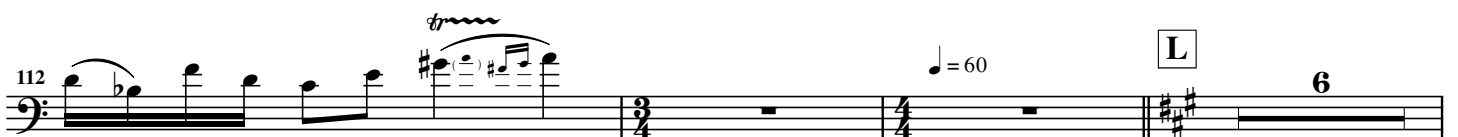
95 **Solo** **J** **Sancho Panza, fidèle écuyer** **Poco rall.** **A T°**
 *mf* (ossia)

99 

102 **K** **All** **Solo**
 *f* *mf*

106 **Solo**
 *f* *mf*

109 **Poco rall.** **A T°**
 (ossia)

112  **L** ♩ = 60 **6**

121 **All** **M** T° di marcia ♩ = 108

f *p* *p*

127

4

N Allegro ♩ = 128 **Les moulins à vents, géants maléfiques**

138 *f* *ff*

O one cue Trb. 3

146 *mf* *f*

Play All **P**

152 *f* *ff*

160 *mf* *f* one cue Hrn. 3

Play **Q** Poco meno mosso

168 *f* *ff*

177 *mf* *f* *p*

R Allegro ♩ = 128

187 *f* *f* *ff*

S one cue Trb. 3

195 *mf* *f*

202 **All** **T** **Meno mosso**

one cue Hrn. 3 *f*

211

220 **U** one cue B. Cl. **2**

p *mf* *p*

230 one cue B. S. **Rall.** **V** **Adagio** ♩ = 66 one cue B. Cl. **Dulcinée, amour chimérique**

p *p*

239 **Play** **All**

f *p*

W one cue B. Cl. **Play** **All**

p *> p* *f*

X

256

Epilogue **Y** **Allegro** ♩ = 126 **All**

one *ff* *p* *p*

271

ff *ffp* *ff*