

A te, Piemonte

Al Piemonte

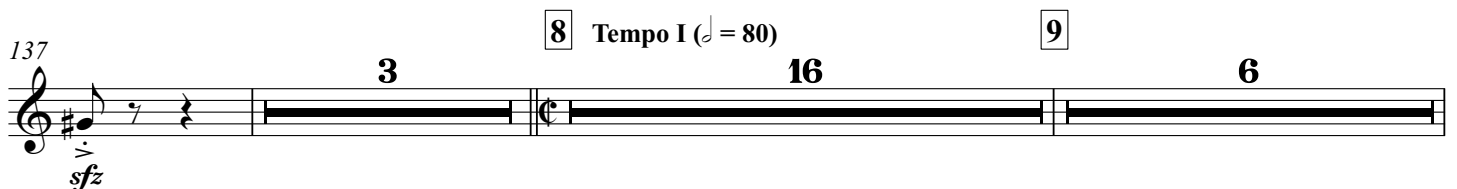
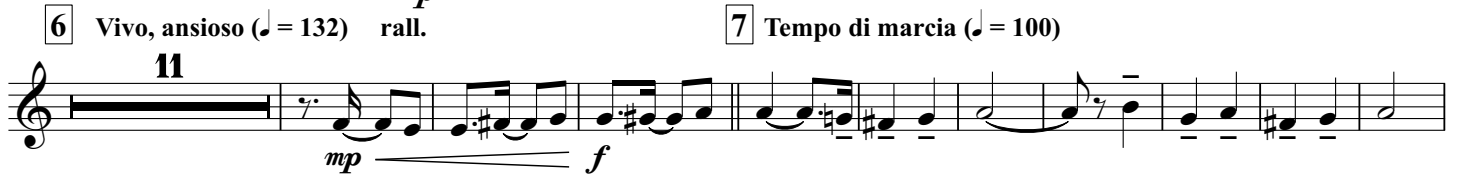
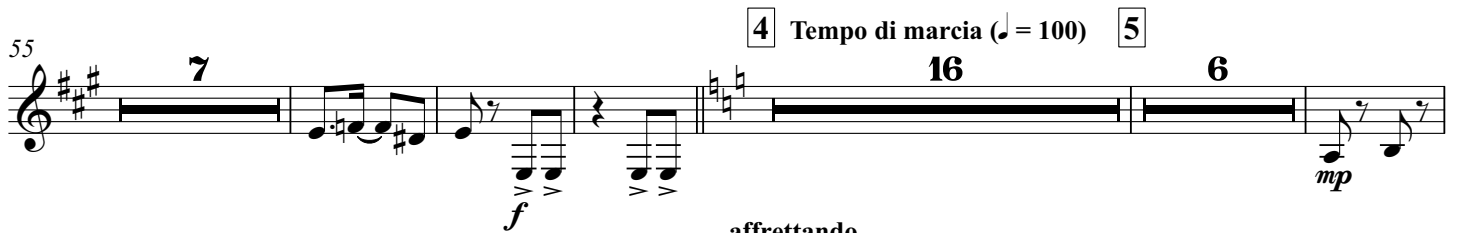
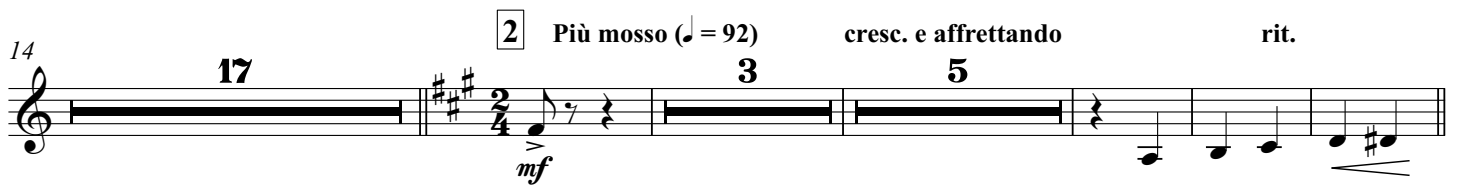
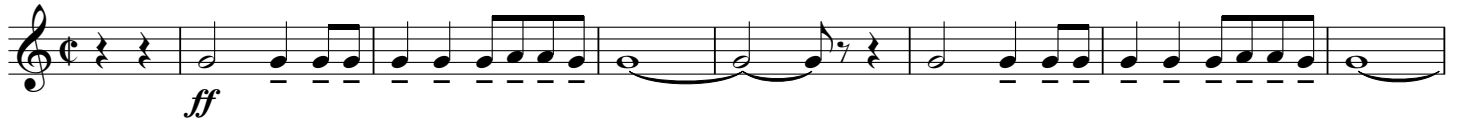
B♭ Bass Trombone

1. Insegne gloriose

Carlo Alberto PIZZINI

arr. Filippo CANGIAMILA

Allegro Solenne ♩ = 80



163

10 Mosso (♩ = 92) stringendo

ff *mf* *f*

[illegible]

2. NOTTURNO SULLE ALPI

[illegible]

225 14 Andante (♩ = 60) *f*
poco movendo

5 7

243 play

2

rit

15 Largo ($\text{♩} = 50$)

f

mf

ff

cresc. e affrettando

sfz

poco rall.

253

The musical score for the second system of 'The Swan' by Camille Saint-Saëns. It begins with a treble clef and a key signature of one sharp (F#). The tempo is marked 'Largo' with a quarter note equal to 50 beats per minute. The system includes a fermata, a crescendo and acceleration marking, and a fortissimo section with a triplets and a poco rallentando marking.

252 *cresc. e affrettando* *poco rall.*

16 **Largo (ma meno dell'inizio del II Tempo)**

274 poco rall. // 17 A tempo senza rallentare Calmo ($\text{♩} = 56$) *mp*

 3 2 4 15 3 muted
pp

3. MACCHINE E CUORI (LA FONDERIA DELLA FIAT)

18 Pesante (♩ = 84) **11** open

f *ff* (sempre *ff*)

327 19 32 7 32

327 328 329 330 331 332

fp

342 20

353

f

353 21

f *ff*

370 22

f

381 23

ff

396 24

mf

411 25

mf *ff*

426

438

fp *f* *ff*

26

458 poco sostenuto ma ritmato

ffp *ff* *fp* *ff*