

A te, Piemonte

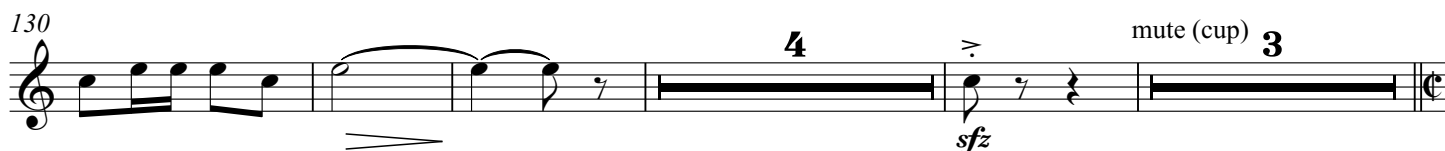
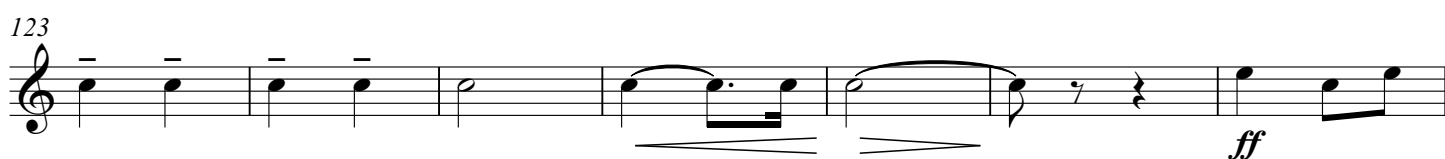
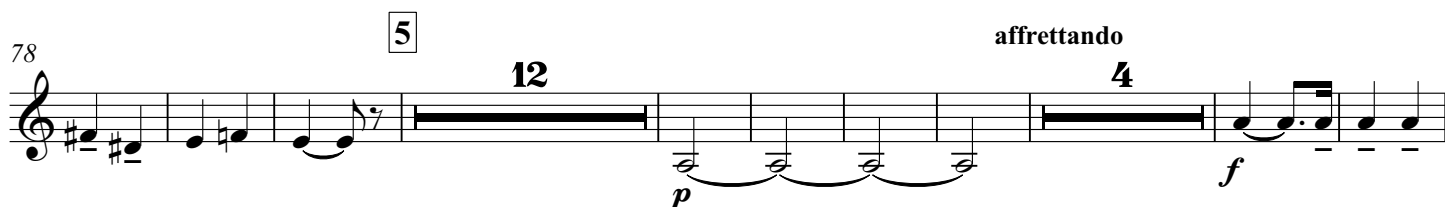
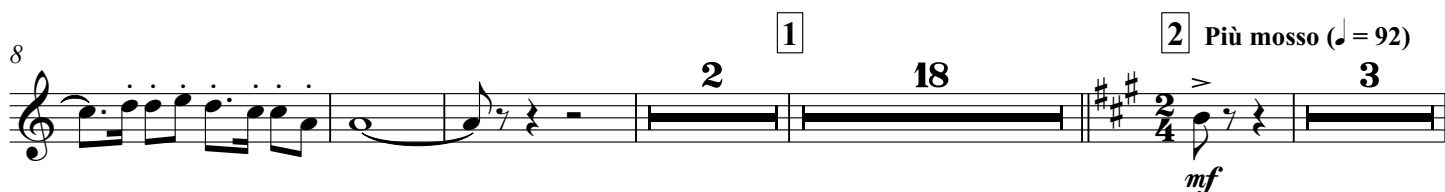
Al Piemonte

B♭ Trombone 2

1. Insegne gloriose

Carlo Alberto PIZZINI
arr. Filippo CANGIAMILA

Allegro Solenne ♩ = 80



B♭ Trombone 2

8 Tempo I (♩ = 80) (muted) *pp*

4

153 9 open *mf* *ff*

5 3

10 Mosso (♩ = 92) stringendo 11 Presto (♩ = 72)

7 *mf* *f* *ff*

185 rall. 12 Tempo di marcia (♩ = 100)

f *sfp* 3

197 poco ral.

mf

2. NOTTURNO SULLE ALPI

13 Largo (♩ = 50)

2 3 3 7

225 14 Andante (♩ = 60) (Bsn. 2) poco movendo

2 4 *mp* 2 7

B♭ Trombone 2

rit

15 Largo (♩ = 50)

243 play

cresc. e affrettando

251

poco rall.

16 Largo (ma meno dell'inizio del II Tempo)

259

269

283

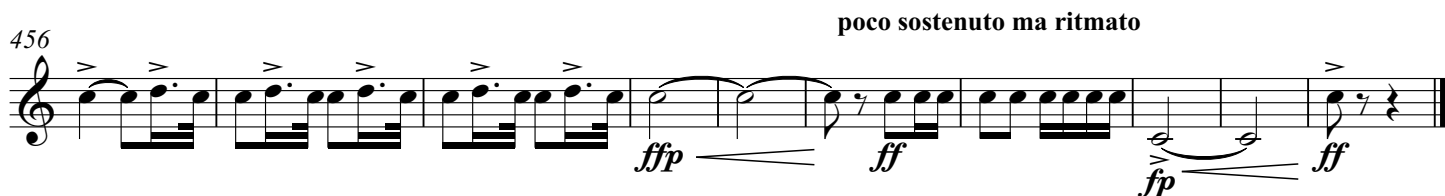
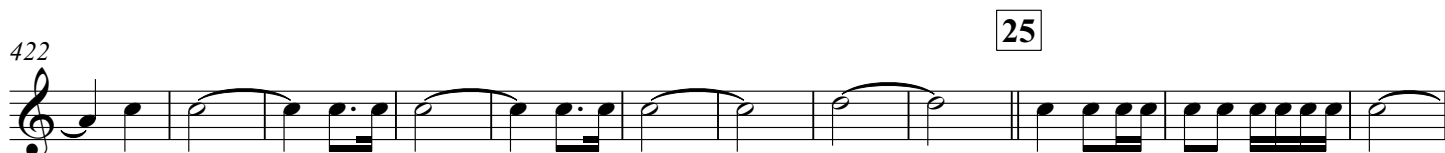
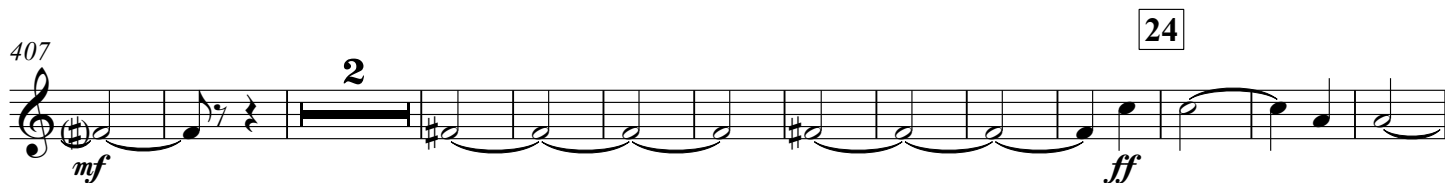
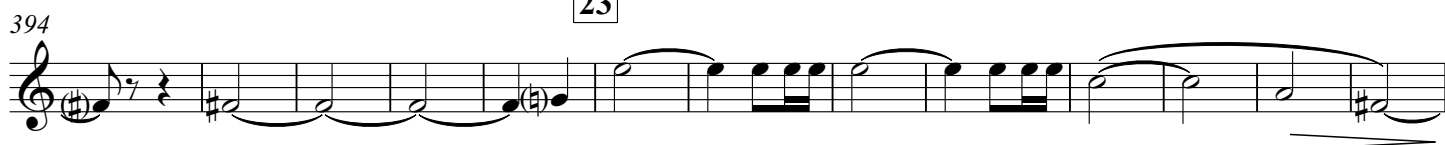
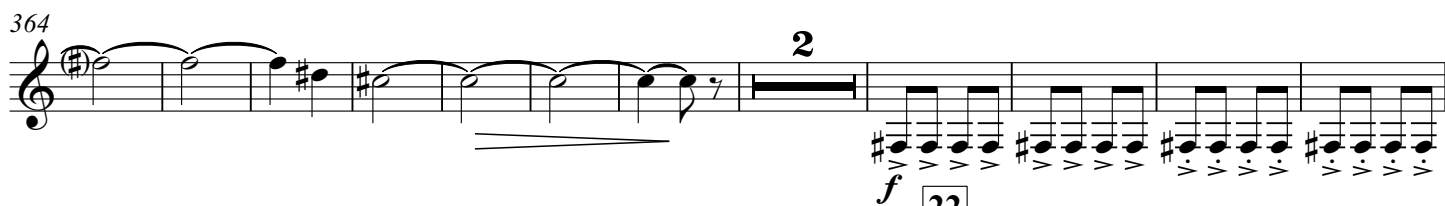
3. MACCHINE E CUORI (LA FONDERIA DELLA FIAT)

18 Pesante (♩ = 84)

311

325

20



poco sostenuto ma ritmato