

# Al Piemonte

Carlo Alberto PIZZINI  
arr. Filippo CANGIAMILA

**Allegro Solenne**  $\text{♩} = 80$

[illegible][illegible]

20

Measure 20 of the piece. The bass clef is on the left. The notes are: G2 (quarter), A2 (quarter), B2 (quarter), C3 (half, tied to the next measure). The key signature has one sharp (F#). The time signature is 4/4.

27 

cresc. e affrettando

rit.

35

*f* cresc.

**3** Tempo I ( $\text{♩} = 80$ )

*f* *ff*

53

*f*

**4** Tempo di marcia ( $\text{♩} = 100$ )

75

*mf*

85

*p*

affrettando

**6** Vivo, ansioso ( $\text{♩} = 132$ )

96

*f* *p*

rall.

108

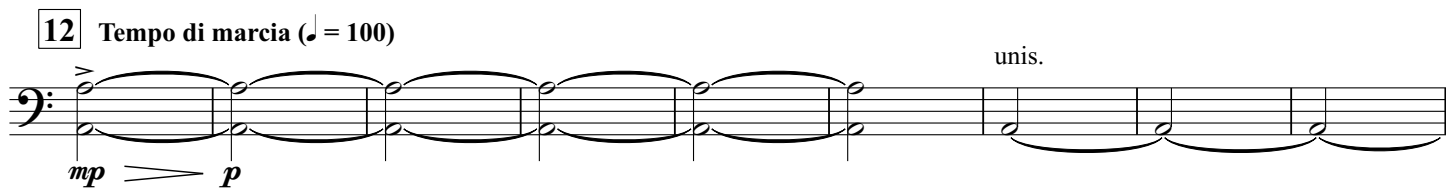
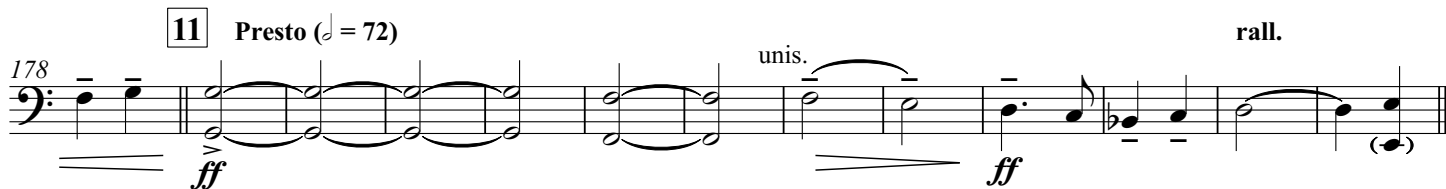
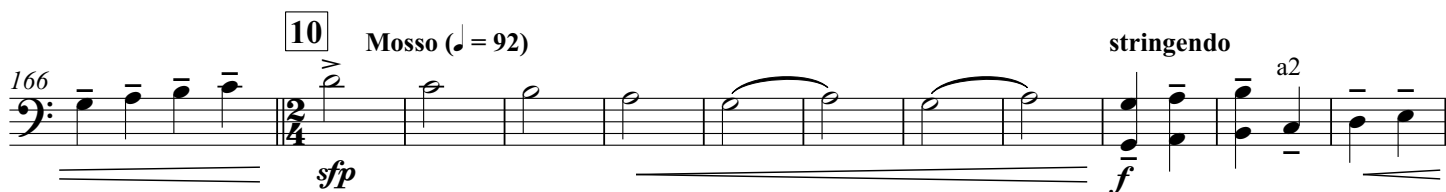
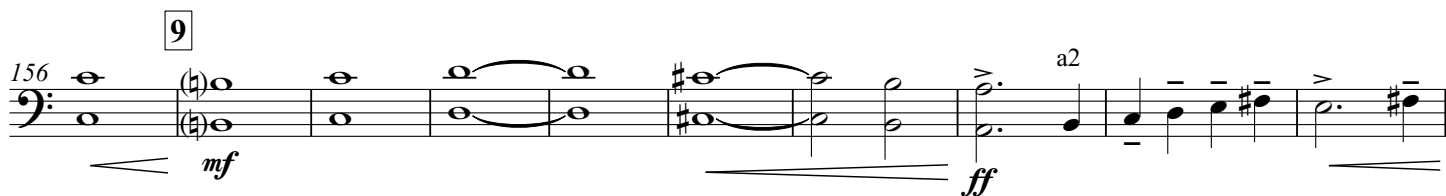
**7** Tempo di marcia ( $\text{♩} = 100$ )

118

*f*



**8** Tempo I (♩ = 80)



## 2. NOTTURNO SULLE ALPI

**13** Largo (♩ = 50)



218 1 player all

*p* *p*

**14** Andante ( $\text{♩} = 60$ )

234 poco movendo a2

*pp* *p*

241 rit

*f* *p*

**15** Largo ( $\text{♩} = 50$ )

cresc. e affrettando poco rall.

*ff* *sfz* *f*

**16** Largo (ma meno dell'inizio del II Tempo)

1 player all

*f* *fp* *ff* *p*

273 poco rall. **17** A tempo senza rallentare

*p* *p* *3* *3*

282 Calmo ( $\text{♩} = 56$ )

*più p* *ppp*

293 unis. unis.

*pp* *pp*

### 3. MACCHINE E CUORI (LA FONDERIA DELLA FIAT)

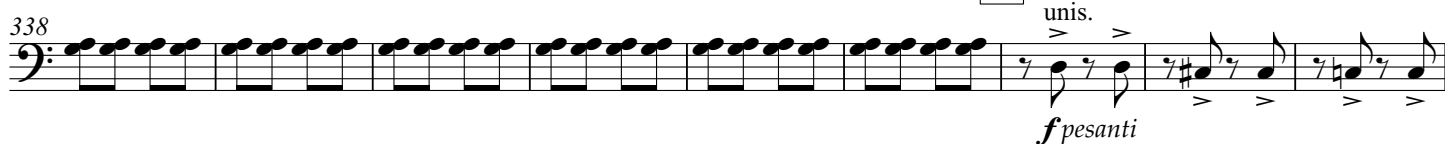
**18** Pesante (♩ = 84)



**19**



**20**



**21** (quasi legato)



22



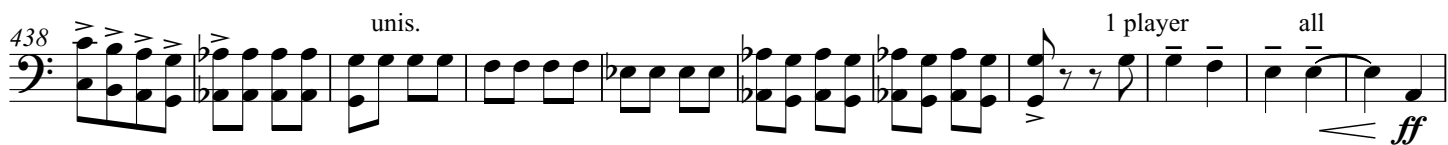
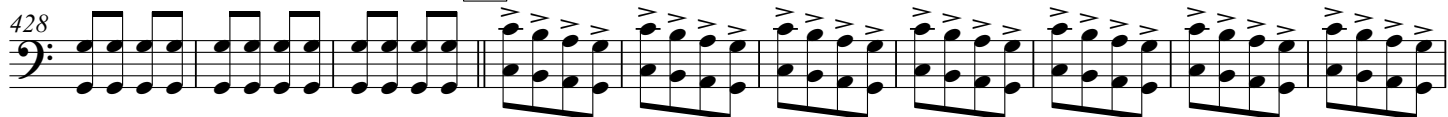
23



24



25



26



poco sostenuto ma ritmato

