

A te, Piemonte

# Al Piemonte

## 1. Insegne gloriose

B♭ Tuba

Carlo Alberto PIZZINI  
arr. Filippo CANGIAMILA

Allegro Solenne ♩ = 80

2

*ff*

9 a2 *f*

20

27 **2** Più mosso (♩ = 92) **3** *mf*

35 **cresc. e affrettando** **rit.**

*f cresc.*

**3** Tempo I (♩ = 80)

*f ff*

53 **a2**

*f*

**4** Tempo di marcia (♩ = 100)

**5**

75

*mf*

85

*p*

**affrettando**

**6** Vivo, ansioso (♩ = 132)

96

*f p*

**rall.**

108

**7** Tempo di marcia (♩ = 100)

118

*f*

## B♭ Tuba

127

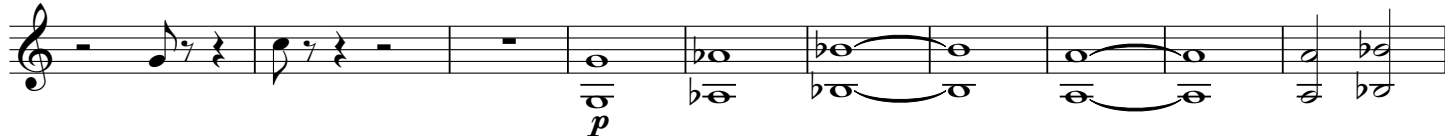


## 8 Tempo I (♩ = 80)

137



146



## 9

156



## 10 Mosso (♩ = 92)

166



## 11 Presto (♩ = 72)

178



## 12 Tempo di marcia (♩ = 100)

188



200



## 2. NOTTURNO SULLE ALPI

## 13 Largo (♩ = 50)

210



218 1 player all

*p* *p*

**14** Andante (♩ = 60)

234 poco movendo a2

*pp* *p*

241 rit

*f* *p*

**15** Largo (♩ = 50)

cresc. e affrettando poco rall.

*ff* *sfz* *f*

**16** Largo (ma meno dell'inizio del II Tempo)

1 player all

*f* *fp* *ff*

273 poco rall. **17** A tempo senza rallentare

*p* *p*

282 Calmo (♩ = 56)

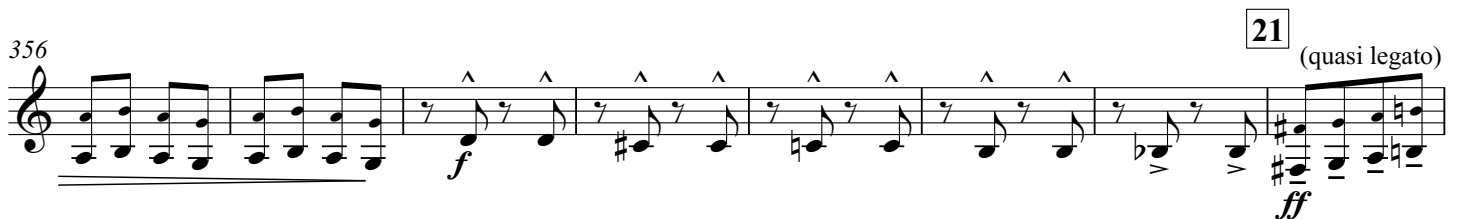
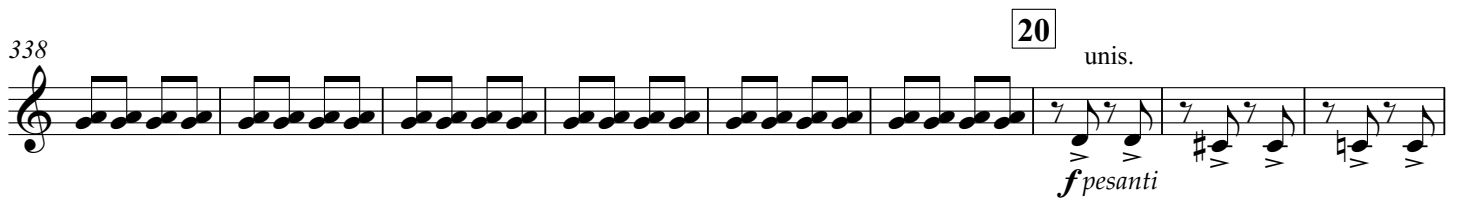
*più p* *ppp*

293 unis. unis.

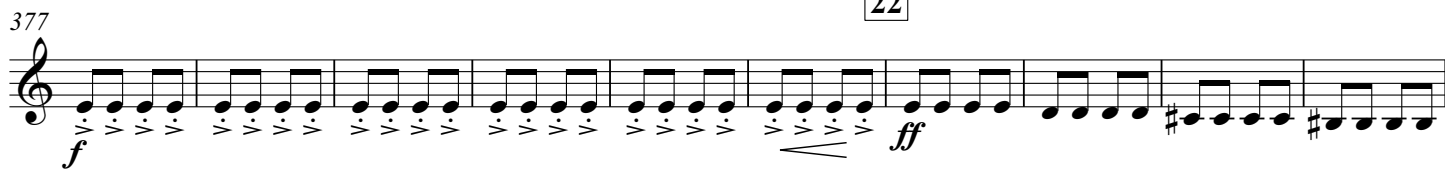
*pp* *pp*

### 3. MACCHINE E CUORI (LA FONDERIA DELLA FIAT)

**18** Pesante (♩ = 84)



22



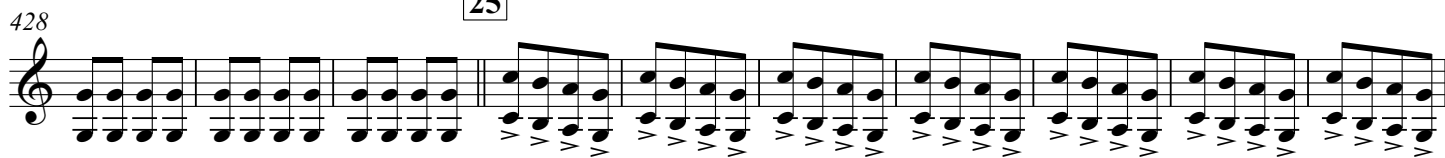
23



24



25



26

