

A te, Piemonte

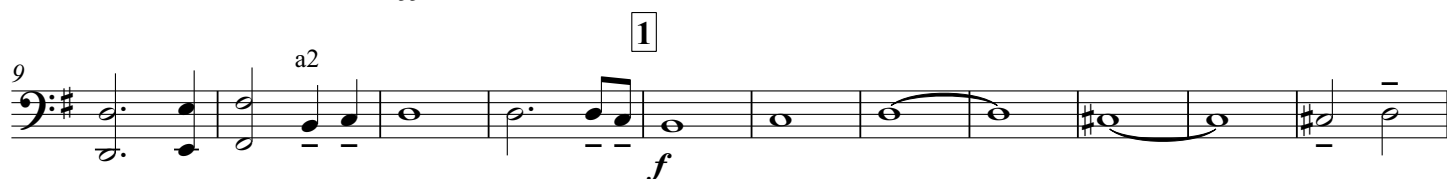
Al Piemonte

1. Insegne gloriose

E♭ Tuba BC

Carlo Alberto PIZZINI
arr. Filippo CANGIAMILA

Allegro Solenne ♩ = 80



cresc. e affrettando

rit.



3 Tempo I (♩ = 80)



4 Tempo di marcia (♩ = 100)



5



affrettando

6 Vivo, ansioso (♩ = 132)



rall.



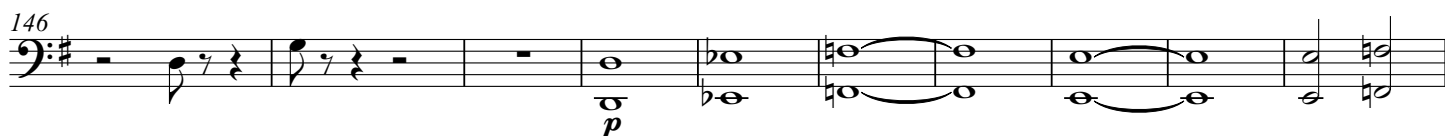
7 Tempo di marcia (♩ = 100)



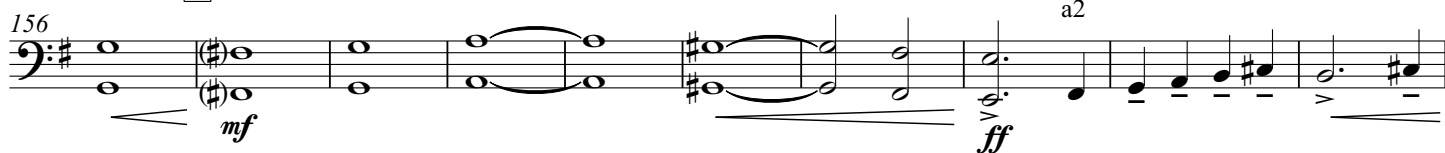
Eb Tuba BC



8 Tempo I (♩ = 80)



9



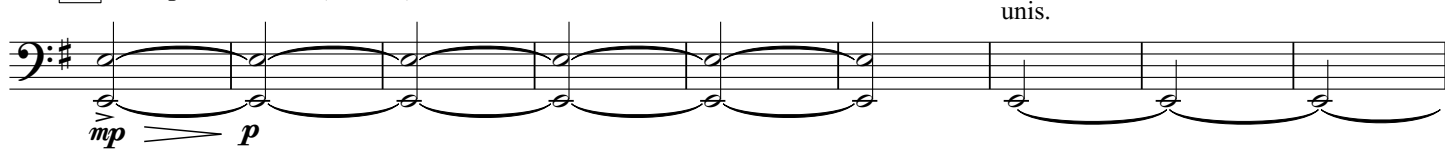
10 Mosso (♩ = 92)



11 Presto (♩ = 72)



12 Tempo di marcia (♩ = 100)



poco ral.



2. NOTTURNO SULLE ALPI

13 Largo (♩ = 50)



218 1 player **2** all

p *p*

14 Andante (♩ = 60)

p

234 a2 poco movendo

pp *p*

241 rit

f *p*

15 Largo (♩ = 50)

cresc. e affrettando poco rall.

ff *sfz* *f*

16 Largo (ma meno dell'inizio del II Tempo)

1 player all

f *fp* *ff* *p*

poco rall. **17** A tempo senza rallentare

p *p*

282 Calmo (♩ = 56)

più p *ppp*

293 unis. unis.

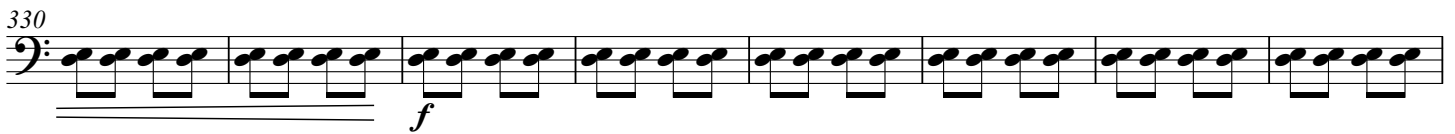
pp *pp*

3. MACCHINE E CUORI (LA FONDERIA DELLA FIAT)

18 Pesante (♩ = 84)

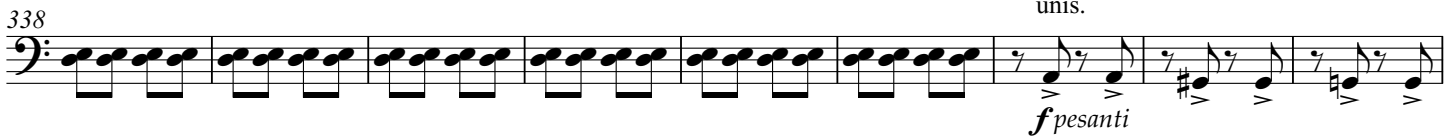


19



20

unis.

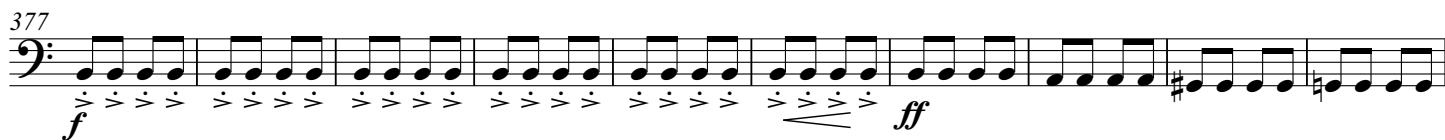


21

(quasi legato)



22



23



24



25



26



poco sostenuto ma ritmato

