

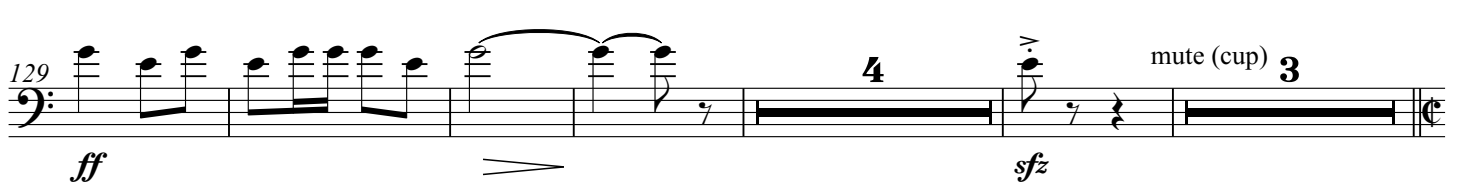
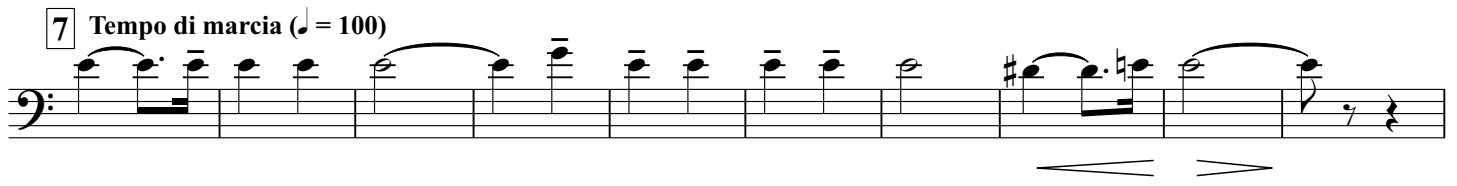
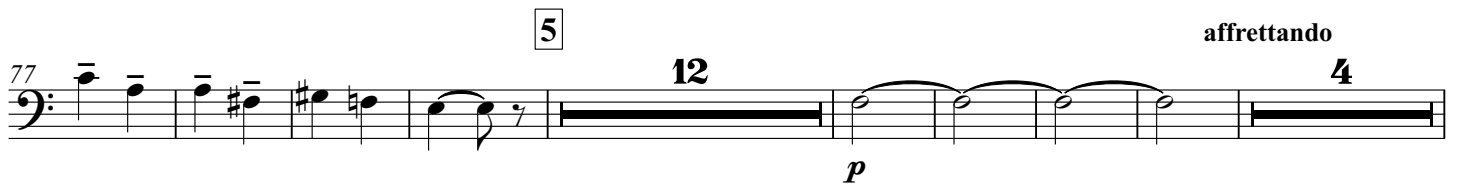
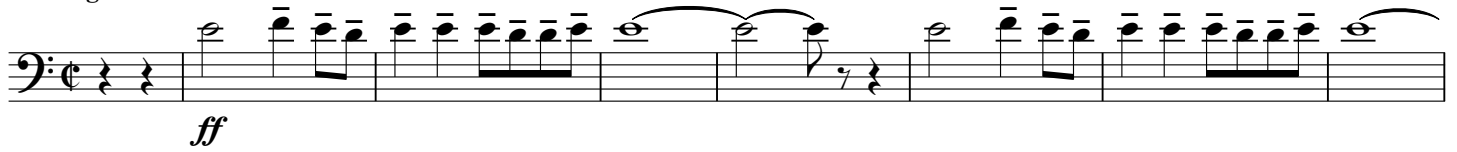
# Al Piemonte

B♭ Trombone 1 BC

1. Insegne gloriose

Carlo Alberto PIZZINI  
arr. Filippo CANGIAMILA

Allegro Solenne ♩ = 80



## B♭ Trombone 1 BC

**8** Tempo I (♩ = 80) (muted)

*pp*

4

**9** open

*mf* *ff*

5

154

**10** Mosso (♩ = 92) stringendo

*mf* *f*

3 7

164

**11** Presto (♩ = 72) rall.

*ff* *f*

2

**12** Tempo di marcia (♩ = 100)

*sfp* *mf*

3

*poco ral.*

200

3/4

## 2. NOTTURNO SULLE ALPI

**13** Largo (♩ = 50)

2 3 3 7

**14** Andante (♩ = 60) (Bsn. 1) poco movendo

*mp*

2 4 2 6

225

## B♭ Trombone 1 BC

242 *play* *f* *p* *rit*

**15** *Largo* (♩ = 50) *ff* *f*

*cresc. e affrettando* *poco rall.* **16** *Largo* (ma meno dell'inizio del II Tempo) *ff*

263 *fp* *ff* *poco rall.* **17** *A tempo* *3*

279 *senza rallentare* (muted) *open* *Calmo* (♩ = 56) *10* *mp*

295 *open* *mute (cup)* *3* *2* (muted) *pp*

### 3. MACCHINE E CUORI (LA FONDERIA DELLA FIAT)

**18** *Pesante* (♩ = 84) *open* *11* *f* *ff* *(sempre ff)*

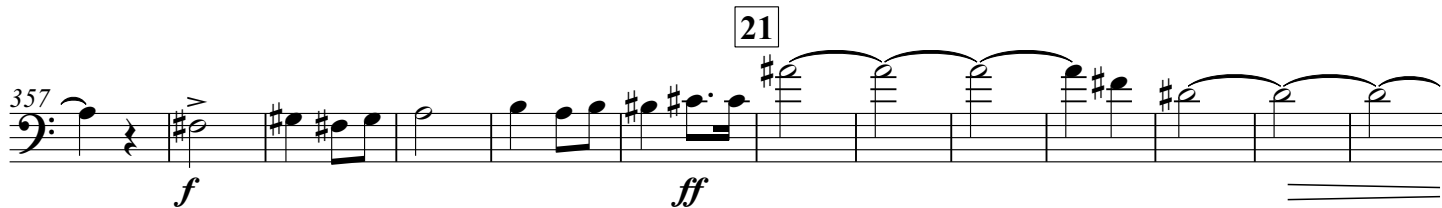
**19** *325* *fp* *8*

## B♭ Trombone 1 BC

20



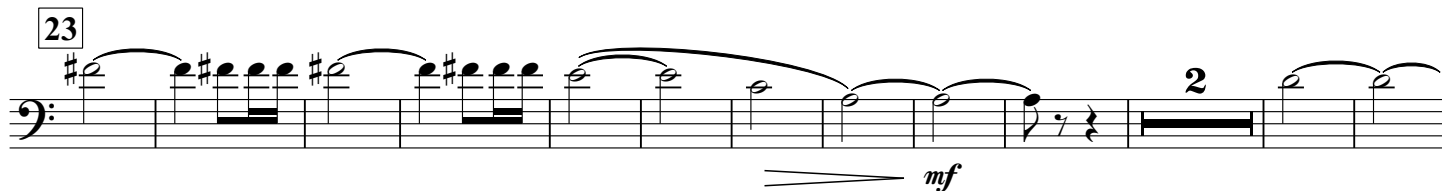
21



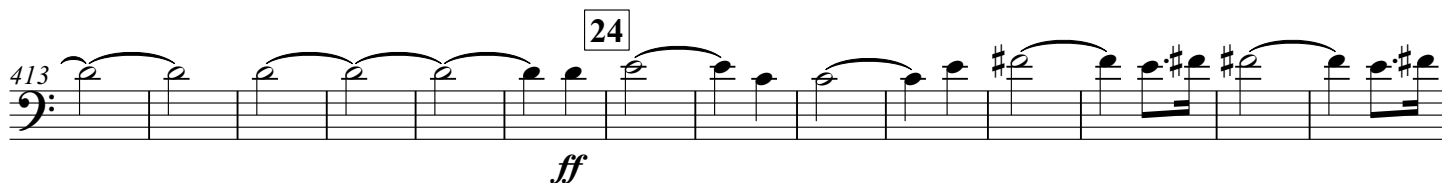
22



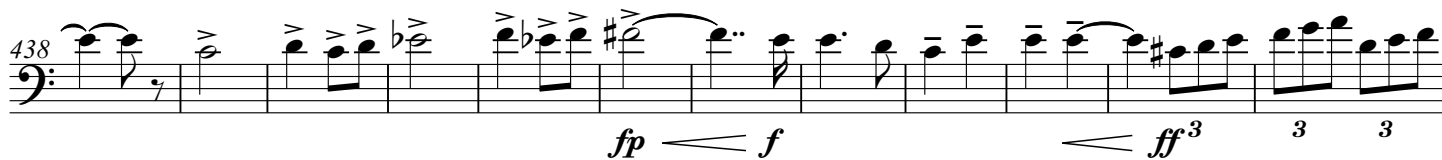
23



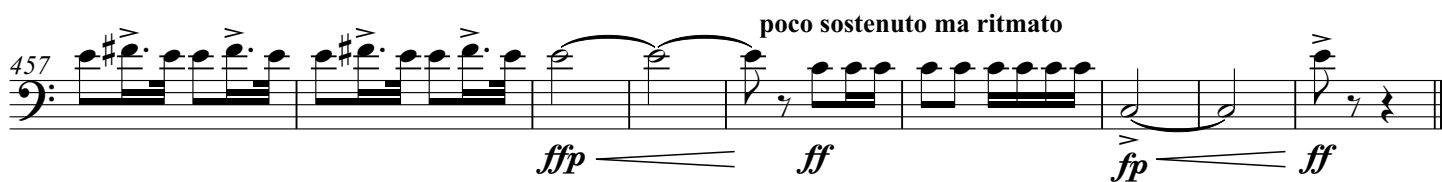
24



25



26



poco sostenuto ma ritmato