

A te, Piemonte

Al Piemonte

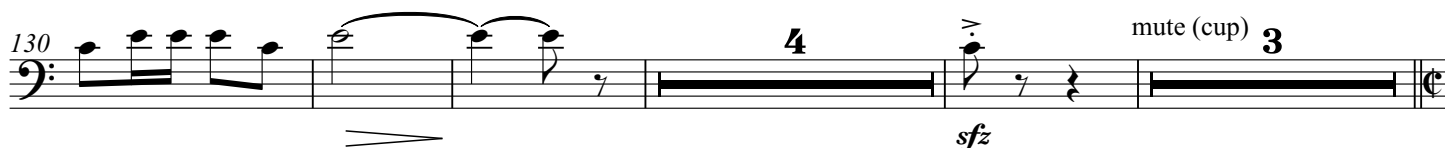
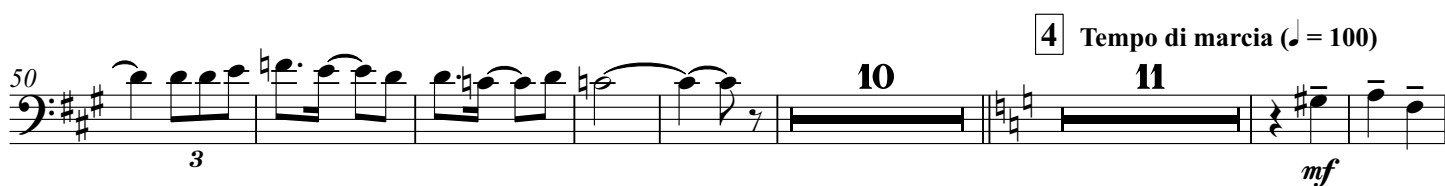
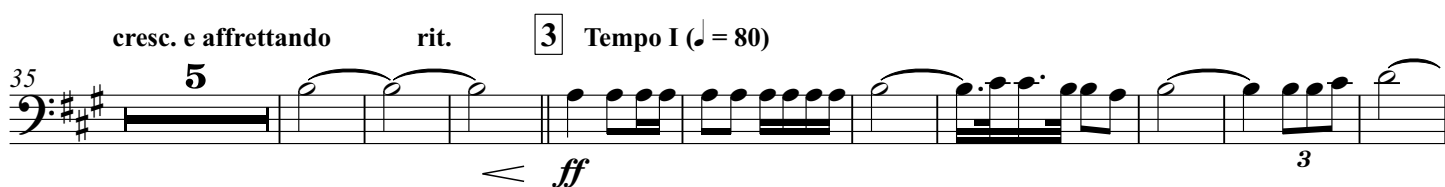
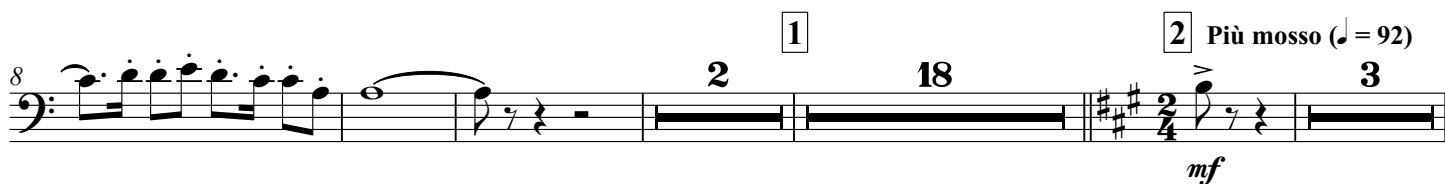
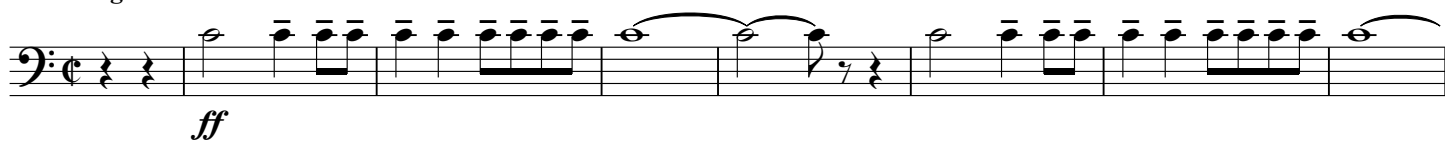
B♭ Trombone 2 BC

1. Insegne gloriose

Carlo Alberto PIZZINI

arr. Filippo CANGIAMILA

Allegro Solenne ♩ = 80



B♭ Trombone 2 BC

8 Tempo I (♩ = 80)
(muted)

pp

9 open

mf *ff*

10 Mosso (♩ = 92) *stringendo* **11** Presto (♩ = 72)

mf *f* *ff*

rall. **12** Tempo di marcia (♩ = 100)

f *sfp*

poco ral.

mf

2. NOTTURNO SULLE ALPI

13 Largo (♩ = 50)

2 3 3 7

14 Andante (♩ = 60) (Bsn. 2) *poco movendo*

mp

B♭ Trombone 2 BC

243 *play* *rit* **15** *Largo* (♩ = 50)

f *p* *ff*

3 3 3 3

251 *cresc. e affrettando*

f

3 3 3

poco rall. **16** *Largo* (ma meno dell'inizio del II Tempo)

259 *ff* *fp* *ff*

3 3 3 3

269 *mute (cup)* *poco rall.* **17** *A tempo* *senza rallentare*

3 2 2

283 *(muted)* *open* *Calmo* (♩ = 56) **15** *(muted)*

mp *pp*

3 3

3. MACCHINE E CUORI (LA FONDERIA DELLA FIAT)

18 *Pesante* (♩ = 84)

11 *open* *f* *ff* *(sempre ff)*

325 **19** *fp*

4

B♭ Trombone 2 BC

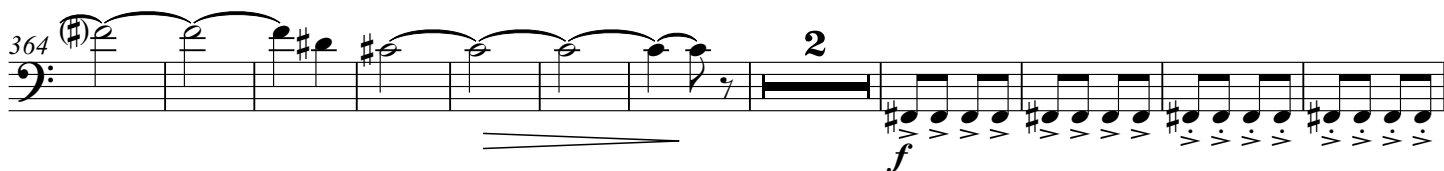
20



21



2

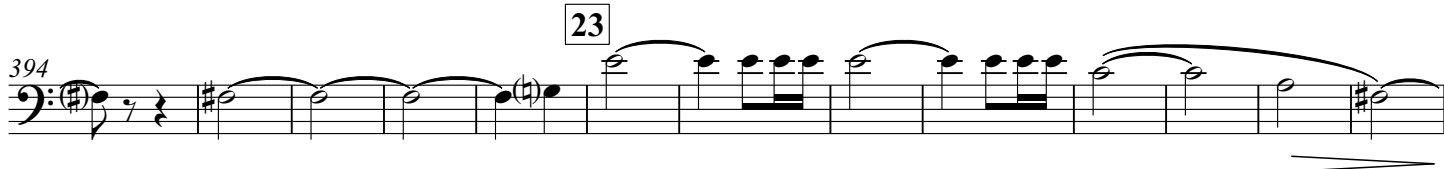


22

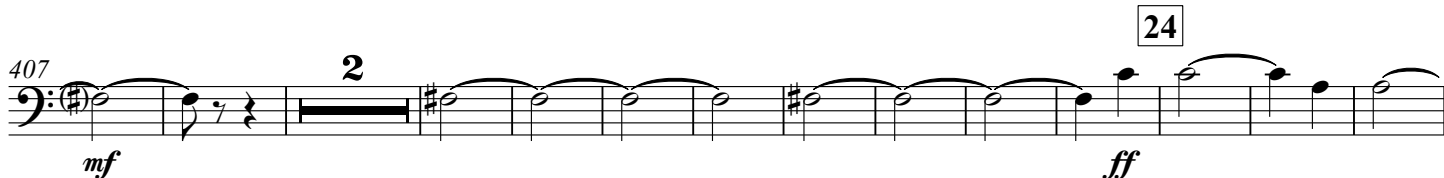
8



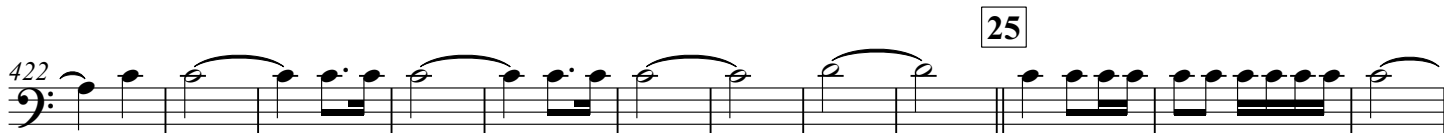
23



24



25

*fp* *f*

26



poco sostenuto ma ritmato

