

SLAVONIC DANCE Op. 46

N° 2

4th E \flat Horn

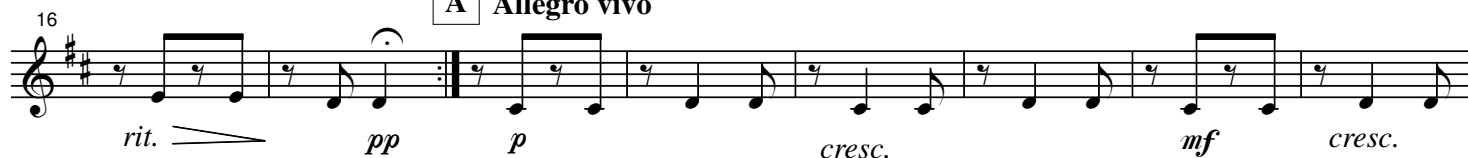
Antonin DVORAK

Arr. José SCHYNS

Allegretto scherzando



A Allegro vivo



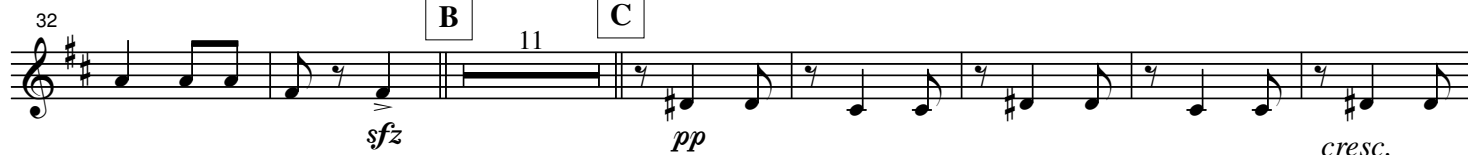
grandioso



B

11

C



Tempo I°



D a tempo

E Piu mosso



grandioso



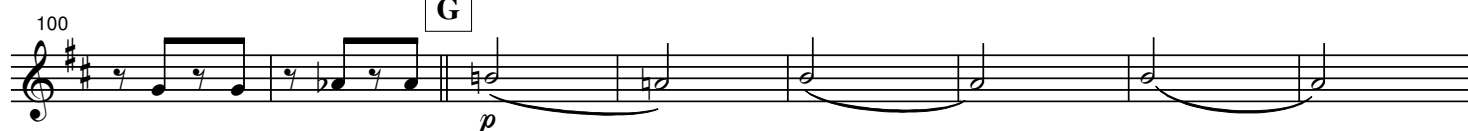
F



grandioso



G



108 **Meno mosso** **H** **Quasi andante** *dim. molto rit.*

120 **I** **a tempo** **Piu mosso**

138 **grandioso** *ff*

146 **J**

154 *p cresc.*

162 **Meno mosso** *f poco rit.*

171 **Piu mosso** *poco a poco rit. pp*

Detailed description of the musical score: The score is for a 4th E-flat Horn part, spanning measures 108 to 171. It begins with a treble clef and a key signature of two sharps (F# and C#). Measure 108 starts with a half note G4, followed by a quarter rest, and then a half note A4. A rehearsal mark 'H' is placed above the staff. The tempo is 'Meno mosso' and the time signature is 'Quasi andante'. A four-measure rest follows. The dynamics are 'dim.' and 'molto rit.'. Measure 112 has a half note G4, followed by a quarter rest, and then a half note A4. A rehearsal mark 'I' is placed above the staff. The tempo is 'a tempo'. Measure 114 has a half note G4, followed by a quarter rest, and then a half note A4. The dynamics are 'p' and 'pp'. Measure 116 has a half note G4, followed by a quarter rest, and then a half note A4. The dynamics are 'pp' and 'f'. Measure 118 has a half note G4, followed by a quarter rest, and then a half note A4. The tempo is 'Piu mosso'. Measure 120 has a half note G4, followed by a quarter rest, and then a half note A4. The dynamics are 'f'. Measure 122 has a half note G4, followed by a quarter rest, and then a half note A4. The dynamics are 'f'. Measure 124 has a half note G4, followed by a quarter rest, and then a half note A4. The dynamics are 'f'. Measure 126 has a half note G4, followed by a quarter rest, and then a half note A4. The dynamics are 'f'. Measure 128 has a half note G4, followed by a quarter rest, and then a half note A4. The dynamics are 'f'. Measure 130 has a half note G4, followed by a quarter rest, and then a half note A4. The dynamics are 'f'. Measure 132 has a half note G4, followed by a quarter rest, and then a half note A4. The dynamics are 'f'. Measure 134 has a half note G4, followed by a quarter rest, and then a half note A4. The dynamics are 'f'. Measure 136 has a half note G4, followed by a quarter rest, and then a half note A4. The dynamics are 'f'. Measure 138 has a half note G4, followed by a quarter rest, and then a half note A4. The tempo is 'grandioso'. The dynamics are 'ff'. Measure 140 has a half note G4, followed by a quarter rest, and then a half note A4. The dynamics are 'ff'. Measure 142 has a half note G4, followed by a quarter rest, and then a half note A4. The dynamics are 'ff'. Measure 144 has a half note G4, followed by a quarter rest, and then a half note A4. The dynamics are 'ff'. Measure 146 has a half note G4, followed by a quarter rest, and then a half note A4. A rehearsal mark 'J' is placed above the staff. Measure 148 has a half note G4, followed by a quarter rest, and then a half note A4. Measure 150 has a half note G4, followed by a quarter rest, and then a half note A4. Measure 152 has a half note G4, followed by a quarter rest, and then a half note A4. Measure 154 has a half note G4, followed by a quarter rest, and then a half note A4. The dynamics are 'p' and 'cresc.'. Measure 156 has a half note G4, followed by a quarter rest, and then a half note A4. The dynamics are 'p' and 'cresc.'. Measure 158 has a half note G4, followed by a quarter rest, and then a half note A4. The dynamics are 'p' and 'cresc.'. Measure 160 has a half note G4, followed by a quarter rest, and then a half note A4. The dynamics are 'p' and 'cresc.'. Measure 162 has a half note G4, followed by a quarter rest, and then a half note A4. The tempo is 'Meno mosso'. The dynamics are 'f'. Measure 164 has a half note G4, followed by a quarter rest, and then a half note A4. The dynamics are 'f'. Measure 166 has a half note G4, followed by a quarter rest, and then a half note A4. The dynamics are 'f'. Measure 168 has a half note G4, followed by a quarter rest, and then a half note A4. The dynamics are 'f'. Measure 170 has a half note G4, followed by a quarter rest, and then a half note A4. The dynamics are 'f'. Measure 171 has a half note G4, followed by a quarter rest, and then a half note A4. The tempo is 'Piu mosso'. The dynamics are 'poco a poco rit.' and 'pp'. There is a six-measure rest in measure 172.