

# CONCERTO *for* HORN Op. 8

B $\flat$  Bass

- Wind Band -

Franz STRAUSS

Arr. Robert SARLETTE

**Allegro moderato**

7

*pp*

one

*pp* *cresc.*

**A** All

17

*ff*

22

27

31

*p*

**B**

6

*pp* *p*

**C**

4 6 one

46

*sfz* *pp*

5 All

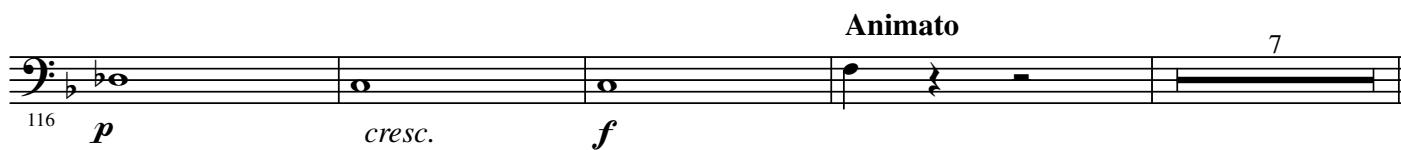
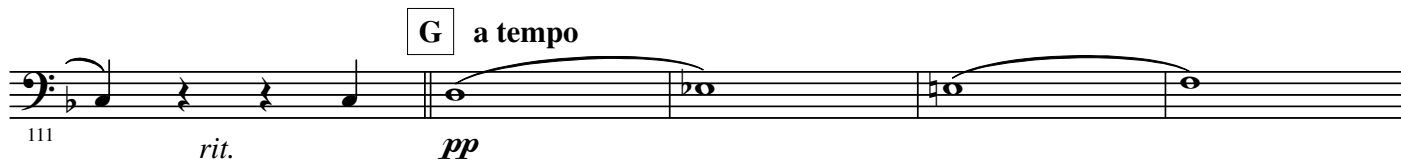
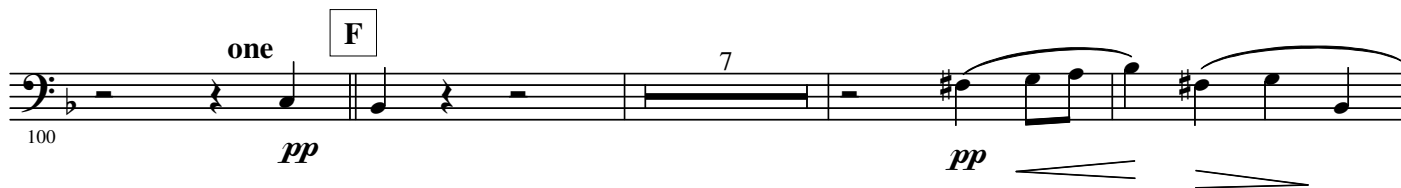
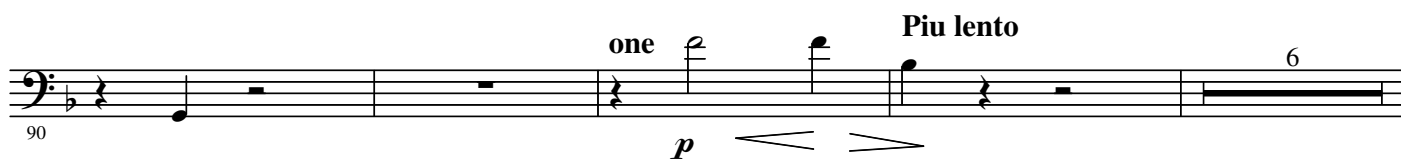
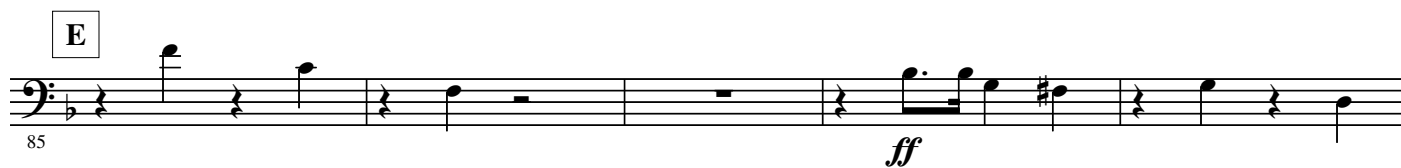
60

*p* *cresc.* *f*

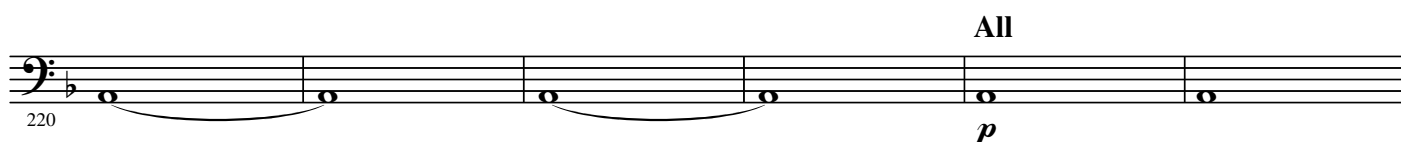
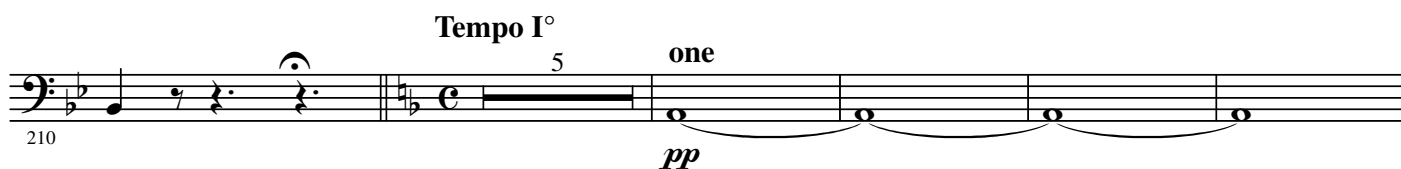
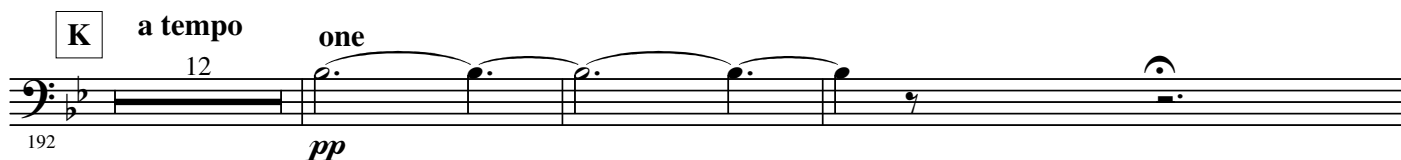
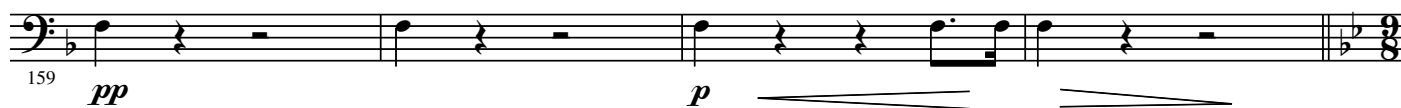
**D** a tempo

70

*p* *rit.* *p* *f*



4.



226 L

*f* *ff*

231

235 *p*

M 240 *p*

250 *sfz* N

264 *p*

O 269 *ff*

274

279 *pp* P *p*

6.

- B $\flat$  Bass -

15

285

one Q a tempo

300 *p* *rit.* *pp*

305 *f*

Animato R Animato

7 15

310 *f*

334