

B \flat Bass

CONCERTO *for* HORN Op. 8

- Wind Band -

Franz STRAUSS

Arr. Robert SARLETTE

Allegro moderato

7

pp

12

pp *cresc.*

A All

17

ff

22

27

31

p

B

36

pp *p*

46

sfz *pp*

C

4 6

one

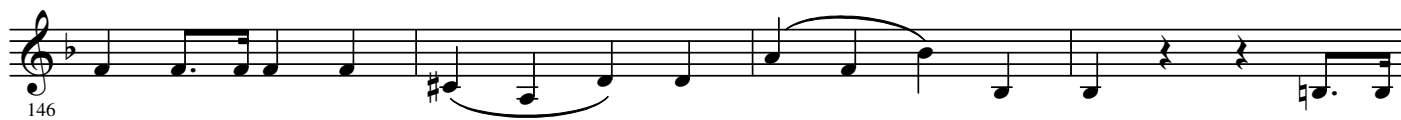
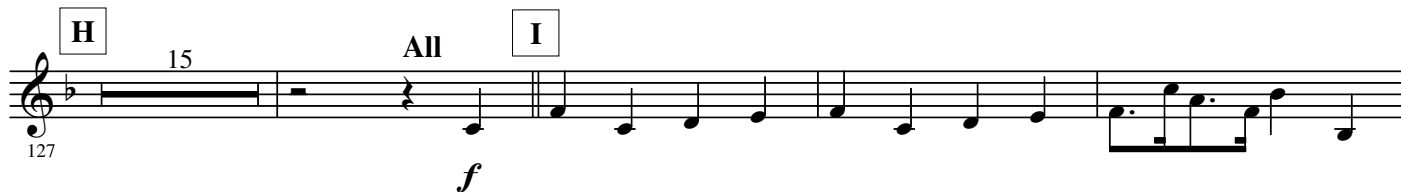
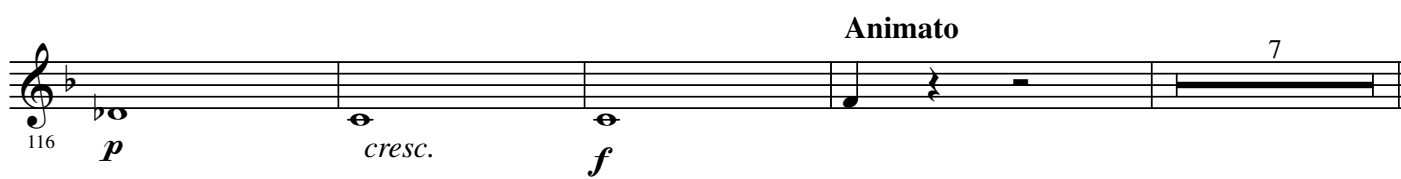
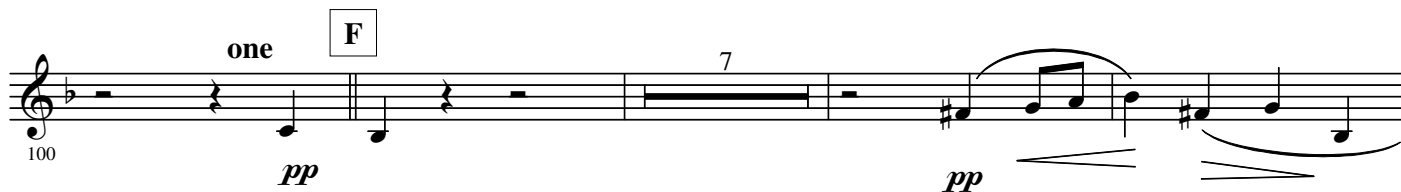
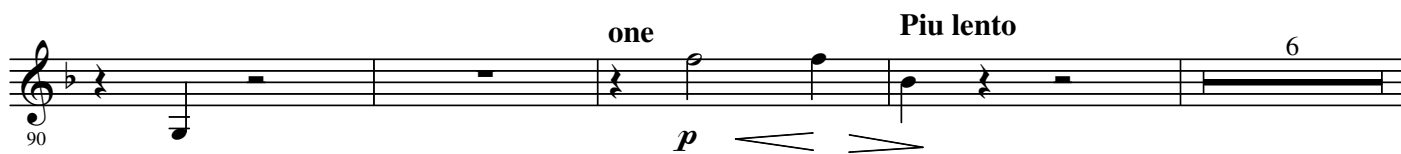
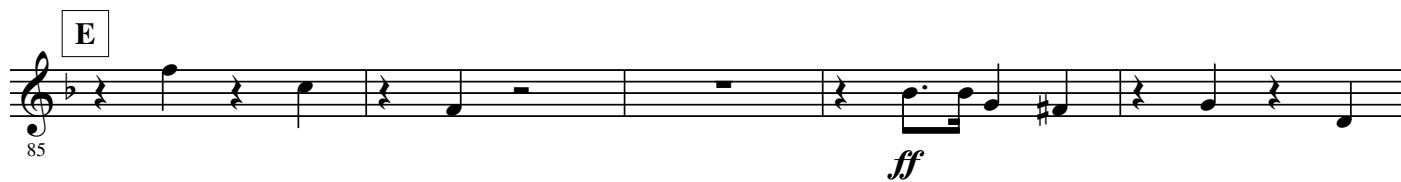
60

p *cresc.* *f*

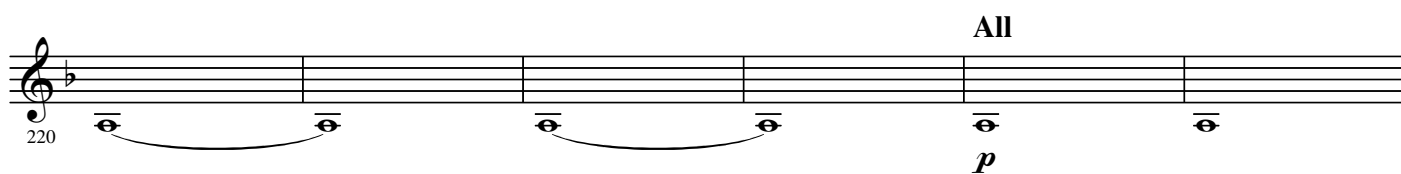
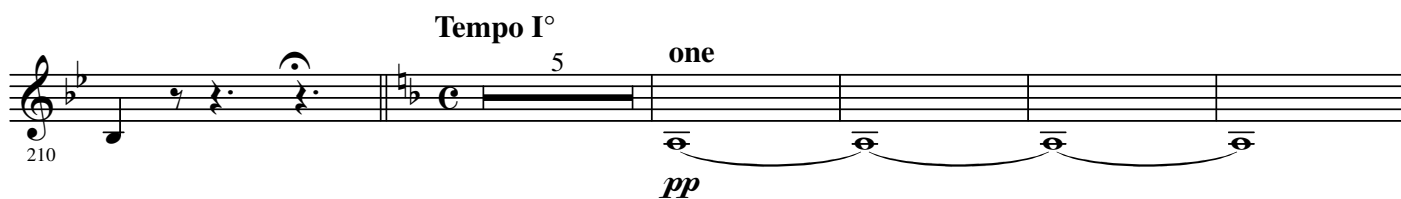
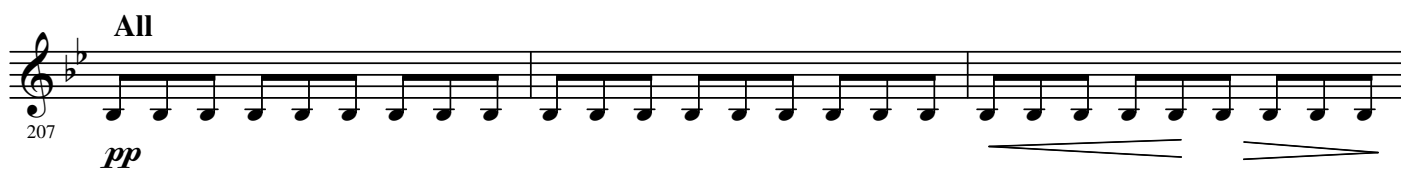
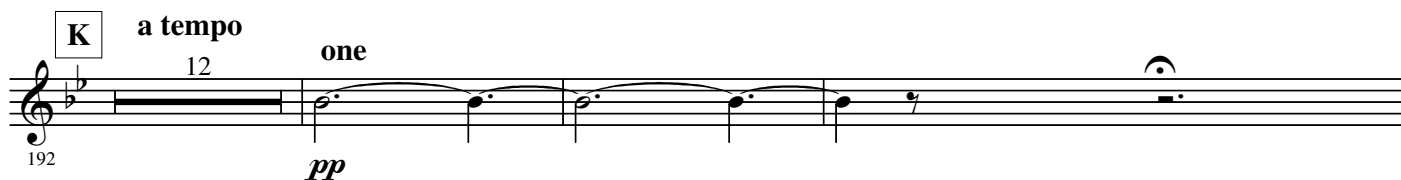
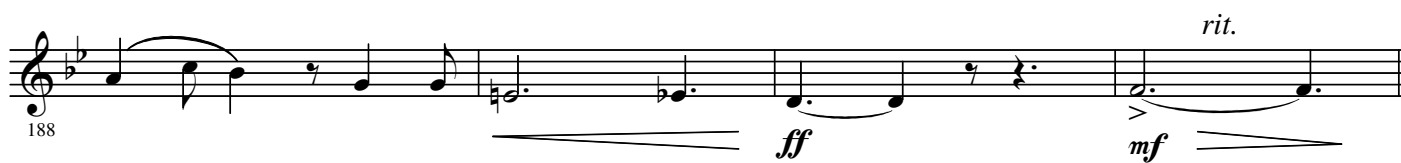
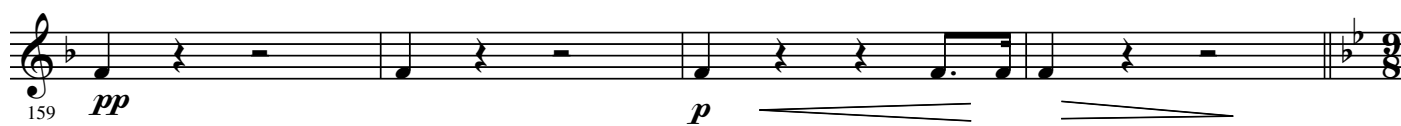
D a tempo

70

p *rit.* *p* *f*



4.



226 L

f *ff*

231

235 *p*

240 M 6 *p*

250 N 4 7 *sfz*

264 *p*

269 O *ff*

274

279 P *pp* *p*

