

CONCERTO *for* HORN Op. 8

E♭ Bass

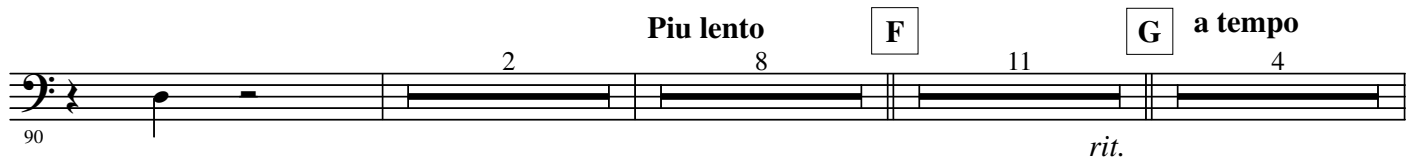
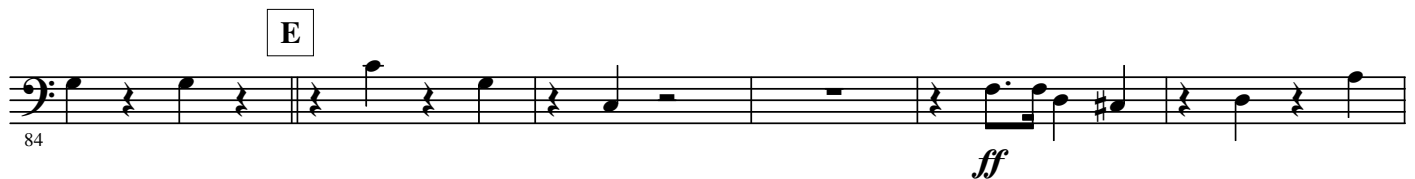
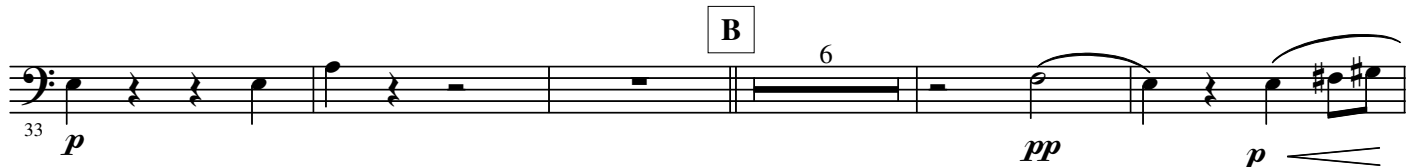
- Wind Band -

Franz STRAUSS

Arr. Robert SARLETTE

Allegro moderato

A



2.

Animato

116 *p* *cresc.* *f* 7

H 15 **I** *f*

127

146

150 4 2 *pp*

159 *pp* *p*

Andante one

163 *p* *p*

172 9 **J** *mf* *f*

184

188 *ff* *mf* *rit.*

K a tempo 12 one *pp*

192

All *pp*

207

Tempo I° 13 **All** *p*

210

L *f ff*

226

231

235 *p*

M 6 *p*

240

sfz **N** 4 7

250

264

269

274

279

284

310

334