

CONCERTO *for* HORN Op. 8

E♭ Bass

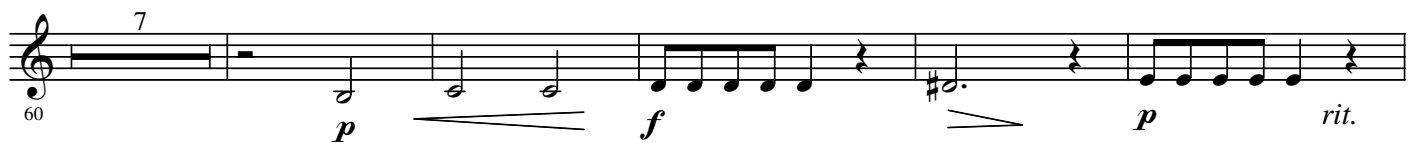
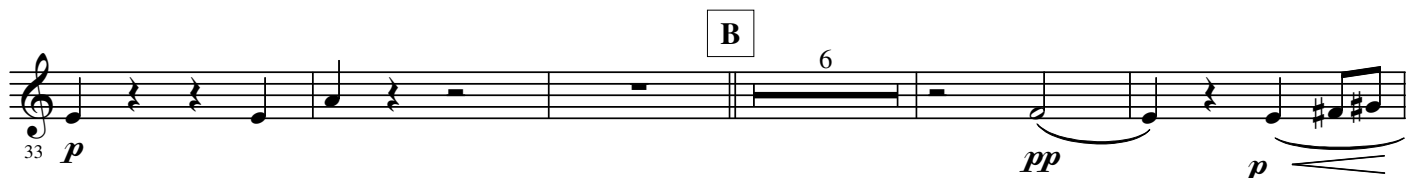
- Wind Band -

Franz STRAUSS

Arr. Robert SARLETTE

Allegro moderato

A



D a tempo



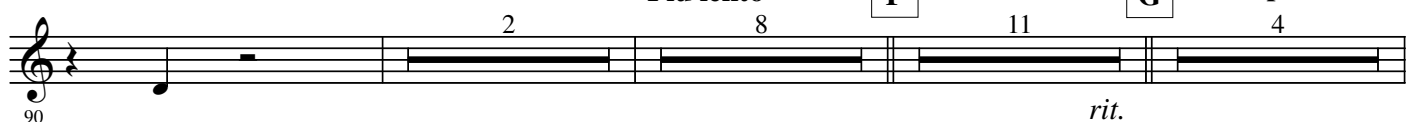
E



Piu lento

F

G a tempo



2.

Animato

116 *p* *cresc.* *f* 7

H 127 15 *f* **I**

146

150 4 *pp* 2

159 *pp* *p*

Andante one

163 *p* 5 *p*

J 172 9 *mf* *f*

184

188 *ff* *mf* *rit.*

K a tempo 12 one

192 *pp*

All

207 *pp*

Tempo I° All

210 *p*

L

226 *f* *ff*

231

235 *p*

M 6

240 *p*

N 4 7

250 *sfz*

4.

