

Goodwin !

Ron Goodwin
arr. Roland Smeets

Tempo di Marcia

1

f

"633 Squadron"

2

5

10

A

3

2

14

21

mf

B

5

f

25

33

37

4

C *Meno Mosso*

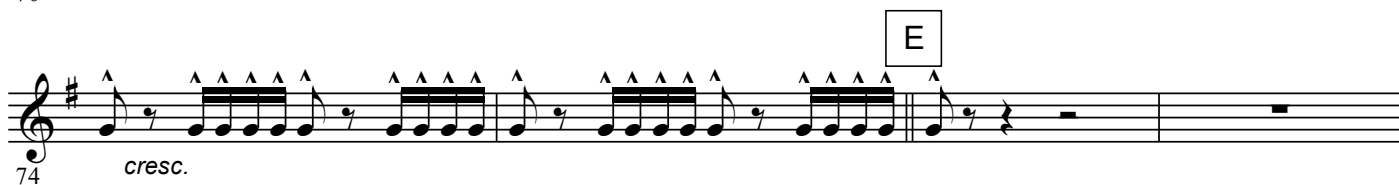
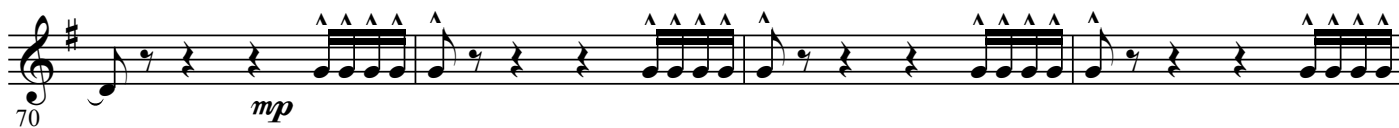
44

"The Battle Of Britain"

14

48

D marcato



$\text{♩} = \text{♩}$ Istesso Tempo



F "Aces High" from "The Battle Of Britain"

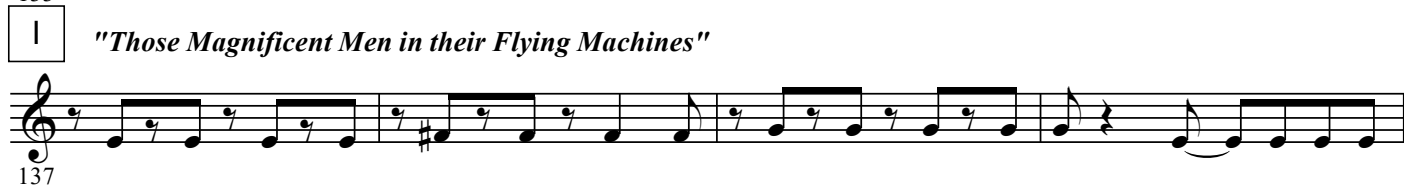


G





$\text{♩} = \text{♩}$ **Istesso Tempo**



molto rit.

