

B $\flat$  Bass 

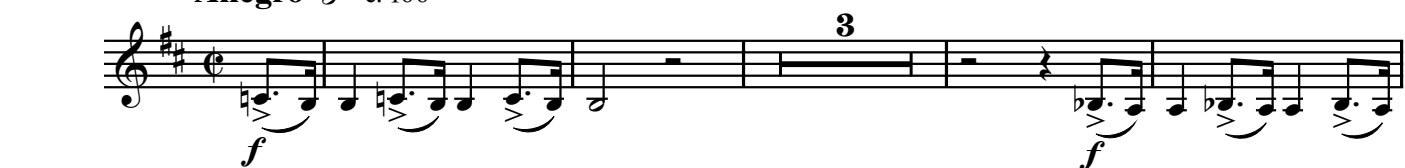
Overture to  
**IL SIGNOR BRUSCHINO**

Wind Band

Gioacchino ROSSINI

Arr. José SCHYNS

**Allegro**  $\text{♩} = \text{c. } 100$



83

**H** **Meno mosso** (♩ = c. 100)

Staff 83-91: Treble clef, key of D major. Measures 83-91. Measure 83 starts with a forte (*f*) dynamic and a triplet of eighth notes. Measure 84 has a triplet of eighth notes. Measure 85 has a triplet of eighth notes. Measure 86 has a triplet of eighth notes. Measure 87 has a triplet of eighth notes. Measure 88 has a triplet of eighth notes. Measure 89 has a triplet of eighth notes. Measure 90 has a triplet of eighth notes. Measure 91 has a triplet of eighth notes. Measure 92 has a triplet of eighth notes.

92

Staff 92-98: Treble clef, key of D major. Measures 92-98. Measure 92 has a triplet of eighth notes. Measure 93 has a triplet of eighth notes. Measure 94 has a triplet of eighth notes. Measure 95 has a triplet of eighth notes. Measure 96 has a triplet of eighth notes. Measure 97 has a triplet of eighth notes. Measure 98 has a triplet of eighth notes.

99

**I**

Staff 99-105: Treble clef, key of D major. Measures 99-105. Measure 99 has a triplet of eighth notes. Measure 100 has a triplet of eighth notes. Measure 101 has a triplet of eighth notes. Measure 102 has a triplet of eighth notes. Measure 103 has a triplet of eighth notes. Measure 104 has a triplet of eighth notes. Measure 105 has a triplet of eighth notes.

106

**J**

Staff 106-112: Treble clef, key of D major. Measures 106-112. Measure 106 has a triplet of eighth notes. Measure 107 has a triplet of eighth notes. Measure 108 has a triplet of eighth notes. Measure 109 has a triplet of eighth notes. Measure 110 has a triplet of eighth notes. Measure 111 has a triplet of eighth notes. Measure 112 has a triplet of eighth notes.

113

Staff 113-119: Treble clef, key of D major. Measures 113-119. Measure 113 has a triplet of eighth notes. Measure 114 has a triplet of eighth notes. Measure 115 has a triplet of eighth notes. Measure 116 has a triplet of eighth notes. Measure 117 has a triplet of eighth notes. Measure 118 has a triplet of eighth notes. Measure 119 has a triplet of eighth notes.

120

**K** **acc.** **ff** **♩ = c. 126**

Staff 120-128: Treble clef, key of D major. Measures 120-128. Measure 120 has a triplet of eighth notes. Measure 121 has a triplet of eighth notes. Measure 122 has a triplet of eighth notes. Measure 123 has a triplet of eighth notes. Measure 124 has a triplet of eighth notes. Measure 125 has a triplet of eighth notes. Measure 126 has a triplet of eighth notes. Measure 127 has a triplet of eighth notes. Measure 128 has a triplet of eighth notes.

129

Staff 129-134: Treble clef, key of D major. Measures 129-134. Measure 129 has a triplet of eighth notes. Measure 130 has a triplet of eighth notes. Measure 131 has a triplet of eighth notes. Measure 132 has a triplet of eighth notes. Measure 133 has a triplet of eighth notes. Measure 134 has a triplet of eighth notes.

135

**L**

Staff 135-141: Treble clef, key of D major. Measures 135-141. Measure 135 has a triplet of eighth notes. Measure 136 has a triplet of eighth notes. Measure 137 has a triplet of eighth notes. Measure 138 has a triplet of eighth notes. Measure 139 has a triplet of eighth notes. Measure 140 has a triplet of eighth notes. Measure 141 has a triplet of eighth notes.

142

**M** **a tempo** **♩ = c. 126**

Staff 142-157: Treble clef, key of D major. Measures 142-157. Measure 142 has a triplet of eighth notes. Measure 143 has a triplet of eighth notes. Measure 144 has a triplet of eighth notes. Measure 145 has a triplet of eighth notes. Measure 146 has a triplet of eighth notes. Measure 147 has a triplet of eighth notes. Measure 148 has a triplet of eighth notes. Measure 149 has a triplet of eighth notes. Measure 150 has a triplet of eighth notes. Measure 151 has a triplet of eighth notes. Measure 152 has a triplet of eighth notes. Measure 153 has a triplet of eighth notes. Measure 154 has a triplet of eighth notes. Measure 155 has a triplet of eighth notes. Measure 156 has a triplet of eighth notes. Measure 157 has a triplet of eighth notes.

158

**N**

Staff 158-164: Treble clef, key of D major. Measures 158-164. Measure 158 has a triplet of eighth notes. Measure 159 has a triplet of eighth notes. Measure 160 has a triplet of eighth notes. Measure 161 has a triplet of eighth notes. Measure 162 has a triplet of eighth notes. Measure 163 has a triplet of eighth notes. Measure 164 has a triplet of eighth notes.

165

O

Staff 165-171: Treble clef, key of D major. Measures 165-171. Measure 165: quarter rest, quarter note D, quarter rest, quarter note E. Measure 166: quarter rest, quarter note F#, quarter rest, quarter note G. Measure 167: quarter rest, quarter note A, quarter rest, quarter note B. Measure 168: quarter rest, quarter note C, quarter rest, quarter note D. Measure 169: quarter rest, quarter note E, quarter rest, quarter note F#. Measure 170: quarter rest, quarter note G, quarter rest, quarter note A. Measure 171: quarter rest, quarter note B, quarter rest, quarter note C. Dynamics: *f* (forte) starting at measure 170. A wedge-shaped crescendo hairpin is placed above the staff from measure 169 to 171.

172

Staff 172-178: Treble clef, key of D major. Measures 172-178. Measure 172: quarter note D, quarter note E, quarter note F#, quarter note G. Measure 173: quarter note A, quarter note B, quarter note C, quarter note D. Measure 174: quarter note E, quarter note F#, quarter note G, quarter note A. Measure 175: quarter note B, quarter note C, quarter note D, quarter note E. Measure 176: quarter note F#, quarter note G, quarter note A, quarter note B. Measure 177: quarter note C, quarter note D, quarter note E, quarter note F#. Measure 178: quarter note G, quarter note A, quarter note B, quarter note C. Dynamics: *f* (forte) continues from the previous staff.

179

P

Staff 179-185: Treble clef, key of D major. Measures 179-185. Measure 179: quarter note D, quarter note E, quarter note F#, quarter note G. Measure 180: quarter note A, quarter note B, quarter note C, quarter note D. Measure 181: quarter note E, quarter note F#, quarter note G, quarter note A. Measure 182: quarter note B, quarter note C, quarter note D, quarter note E. Measure 183: quarter note F#, quarter note G, quarter note A, quarter note B. Measure 184: quarter note C, quarter note D, quarter note E, quarter note F#. Measure 185: quarter note G, quarter note A, quarter note B, quarter note C. Dynamics: *p* (piano) starting at measure 181, followed by *cresc.* (crescendo) from measure 182 to 185.

186

Staff 186-192: Treble clef, key of D major. Measures 186-192. Measure 186: quarter note D, quarter note E, quarter note F#, quarter note G. Measure 187: quarter note A, quarter note B, quarter note C, quarter note D. Measure 188: quarter note E, quarter note F#, quarter note G, quarter note A. Measure 189: quarter note B, quarter note C, quarter note D, quarter note E. Measure 190: quarter note F#, quarter note G, quarter note A, quarter note B. Measure 191: quarter note C, quarter note D, quarter note E, quarter note F#. Measure 192: quarter note G, quarter note A, quarter note B, quarter note C. Dynamics: *f* (forte) starting at measure 186, indicated by a horizontal line with a wedge-shaped crescendo hairpin below the staff.

193

Q

Staff 193-200: Treble clef, key of D major. Measures 193-200. Measure 193: quarter note D, quarter note E, quarter note F#, quarter note G. Measure 194: quarter note A, quarter note B, quarter note C, quarter note D. Measure 195: quarter note E, quarter note F#, quarter note G, quarter note A. Measure 196: quarter note B, quarter note C, quarter note D, quarter note E. Measure 197: quarter note F#, quarter note G, quarter note A, quarter note B. Measure 198: quarter note C, quarter note D, quarter note E, quarter note F#. Measure 199: quarter note G, quarter note A, quarter note B, quarter note C. Measure 200: quarter note D, quarter note E, quarter note F#, quarter note G. Dynamics: *p* (piano) starting at measure 193, followed by *f* (forte) starting at measure 199. Accents are placed above the notes in measures 195, 196, 197, 199, and 200.

200

R

♩ = c. 100

Staff 200-209: Treble clef, key of D major. Measures 200-209. Measure 200: quarter note D, quarter note E, quarter note F#, quarter note G. Measure 201: quarter note A, quarter note B, quarter note C, quarter note D. Measure 202: quarter note E, quarter note F#, quarter note G, quarter note A. Measure 203: quarter note B, quarter note C, quarter note D, quarter note E. Measure 204: quarter note F#, quarter note G, quarter note A, quarter note B. Measure 205: quarter note C, quarter note D, quarter note E, quarter note F#. Measure 206: quarter note G, quarter note A, quarter note B, quarter note C. Measure 207: quarter note D, quarter note E, quarter note F#, quarter note G. Measure 208: quarter note A, quarter note B, quarter note C, quarter note D. Measure 209: quarter note E, quarter note F#, quarter note G, quarter note A. Dynamics: *p* (piano) starting at measure 200. A 4-measure rest is indicated above measures 201-204.

210

Staff 210-216: Treble clef, key of D major. Measures 210-216. Measure 210: quarter note D, quarter note E, quarter note F#, quarter note G. Measure 211: quarter note A, quarter note B, quarter note C, quarter note D. Measure 212: quarter note E, quarter note F#, quarter note G, quarter note A. Measure 213: quarter note B, quarter note C, quarter note D, quarter note E. Measure 214: quarter note F#, quarter note G, quarter note A, quarter note B. Measure 215: quarter note C, quarter note D, quarter note E, quarter note F#. Measure 216: quarter note G, quarter note A, quarter note B, quarter note C. Dynamics: *p* (piano) continues from the previous staff. Accents are placed above the notes in measures 212, 213, and 214.

217

Staff 217-223: Treble clef, key of D major. Measures 217-223. Measure 217: quarter note D, quarter note E, quarter note F#, quarter note G. Measure 218: quarter note A, quarter note B, quarter note C, quarter note D. Measure 219: quarter note E, quarter note F#, quarter note G, quarter note A. Measure 220: quarter note B, quarter note C, quarter note D, quarter note E. Measure 221: quarter note F#, quarter note G, quarter note A, quarter note B. Measure 222: quarter note C, quarter note D, quarter note E, quarter note F#. Measure 223: quarter note G, quarter note A, quarter note B, quarter note C. Dynamics: *pp* (pianissimo) starting at measure 217.

224

S

Staff 224-230: Treble clef, key of D major. Measures 224-230. Measure 224: quarter note D, quarter note E, quarter note F#, quarter note G. Measure 225: quarter note A, quarter note B, quarter note C, quarter note D. Measure 226: quarter note E, quarter note F#, quarter note G, quarter note A. Measure 227: quarter note B, quarter note C, quarter note D, quarter note E. Measure 228: quarter note F#, quarter note G, quarter note A, quarter note B. Measure 229: quarter note C, quarter note D, quarter note E, quarter note F#. Measure 230: quarter note G, quarter note A, quarter note B, quarter note C. Dynamics: *cresc.* (crescendo) starting at measure 224, followed by *poco à poco* (poco a poco) from measure 227 to 230. Accents are placed above the notes in measures 228, 229, and 230.

231

T

Staff 231-237: Treble clef, key of D major. Measures 231-237. Measure 231: quarter note D, quarter note E, quarter note F#, quarter note G. Measure 232: quarter note A, quarter note B, quarter note C, quarter note D. Measure 233: quarter note E, quarter note F#, quarter note G, quarter note A. Measure 234: quarter note B, quarter note C, quarter note D, quarter note E. Measure 235: quarter note F#, quarter note G, quarter note A, quarter note B. Measure 236: quarter note C, quarter note D, quarter note E, quarter note F#. Measure 237: quarter note G, quarter note A, quarter note B, quarter note C. Dynamics: *f* (forte) starting at measure 231, followed by *cresc.* (crescendo) from measure 232 to 237. The staff ends with *ff* (fortissimo) and *accel.* (accelerando).

238  $\text{♩} = \text{c. } 126$ 247 U

254



261

V

268

