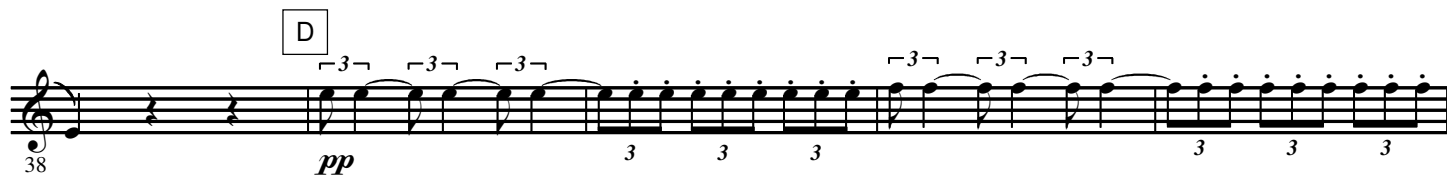
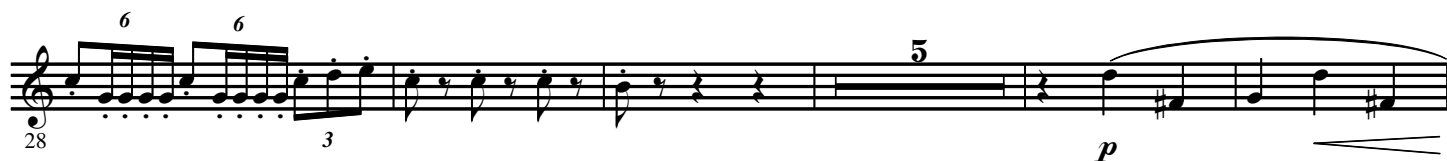
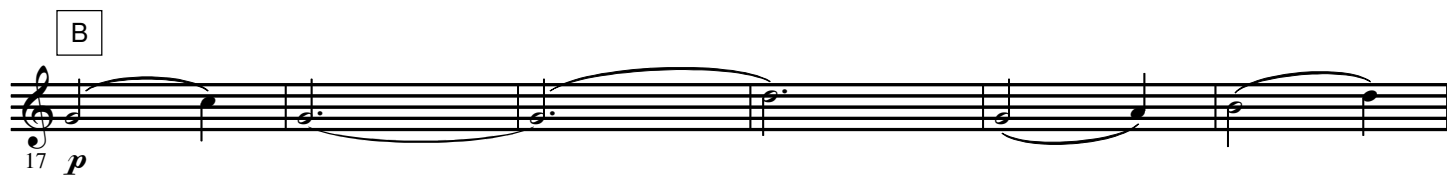


1st E \flat Horn

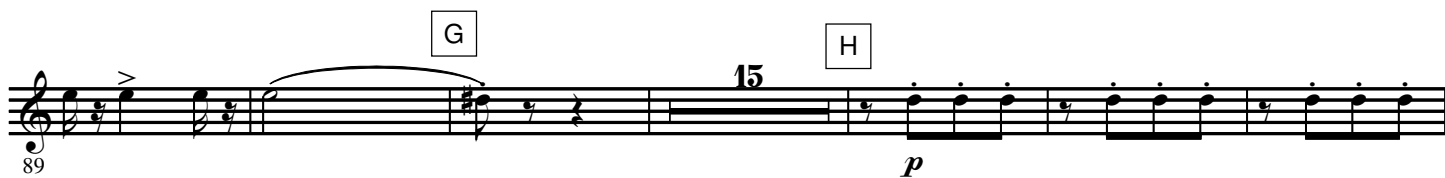
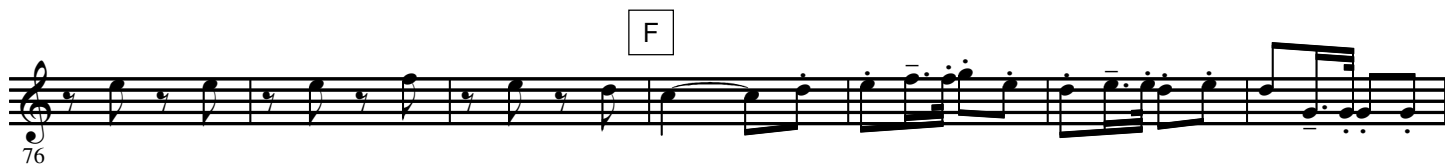
Overture to
IL VIAGGIO A REIMS

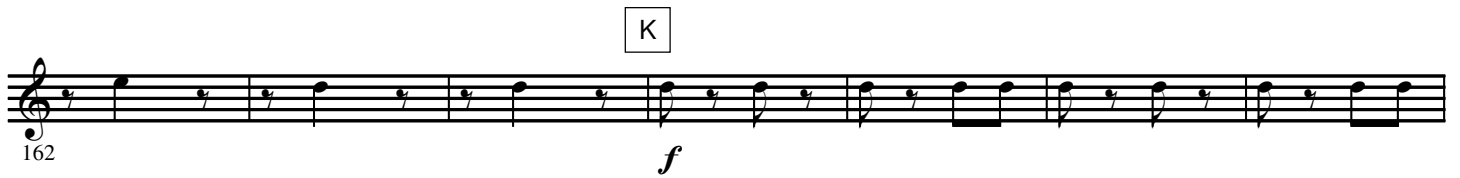
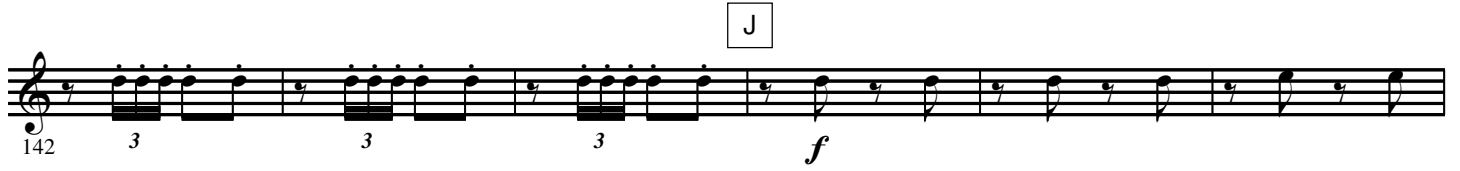
Gioacchino ROSSINI
 Arr. José SCHYNS

Maestoso**Allegretto moderato**

2.

- 1st E♭ Horn -





188 *f* *p* *mf*

195 *pp* *M*

201 *p*

207 *mf*

213 *f* *N*

219

226 *p* *cresc.* *f*

233 *ff* *f* *O*

239

244 *ff* *fff*

Detailed description: This musical score is for the 1st E-flat Horn part, spanning measures 188 to 244. The music is written in treble clef with a key signature of one flat (B-flat). The score consists of nine staves. Measures 188-194 feature a melodic line starting with a forte (*f*) dynamic, moving to piano (*p*), and then mezzo-forte (*mf*). Measure 195 begins a section of triplet eighth notes, marked piano-piano (*pp*), with a box labeled 'M' above the first measure. This triplet pattern continues through measures 200-206, marked piano (*p*). Measures 207-212 continue the triplet pattern, marked mezzo-forte (*mf*). Measure 213 starts another triplet pattern, marked forte (*f*), with a box labeled 'N' above the last measure. Measures 219-225 are a melodic line. Measure 226 begins a crescendo from piano (*p*) to forte (*f*), with a box labeled 'O' above the last measure. Measures 233-238 are marked fortissimo (*ff*), with a box labeled 'O' above the last measure. Measures 239-243 are marked fortissimo (*ff*). Measure 244 is marked fortississimo (*fff*).