

B $\flat$  Bass

# VALSE TRISTE

from Arvid Järnefelt's Drama "Kuolema"

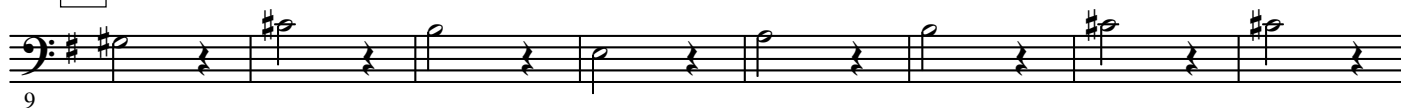
Jean SIBELIUS Op. 44

Arr. José SCHYNS

**Lento**



1

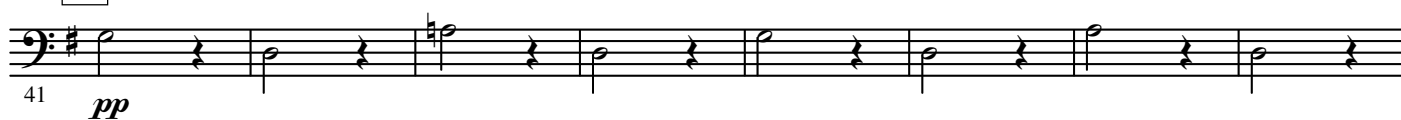


2



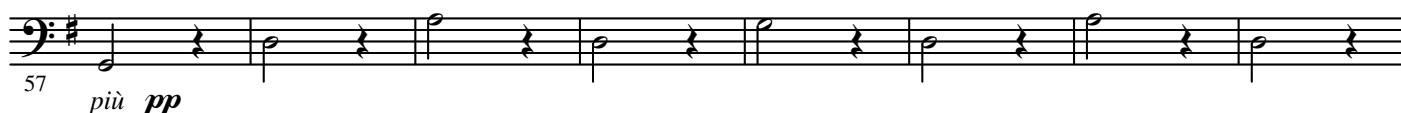
3

**a tempo deciso**

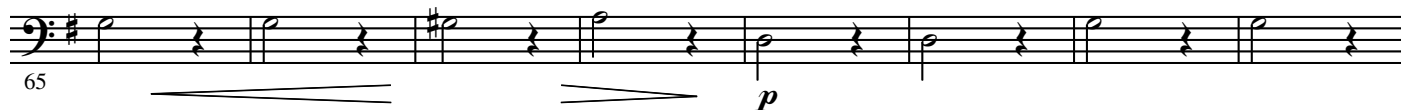


4

**a tempo**



2.

- B $\flat$  Bass -

5



6



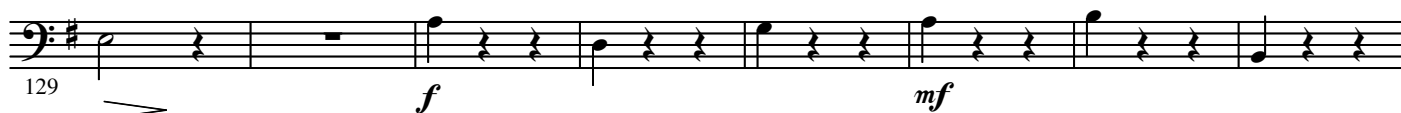
7 a tempo



8



9 Poco risoluto



10



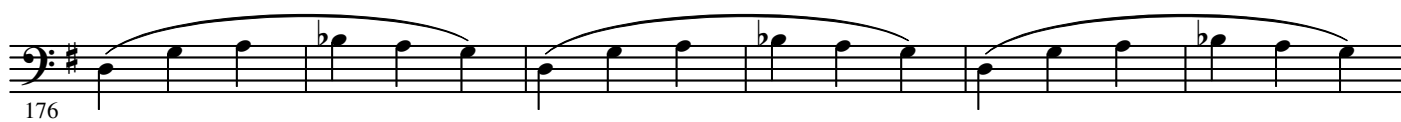
11



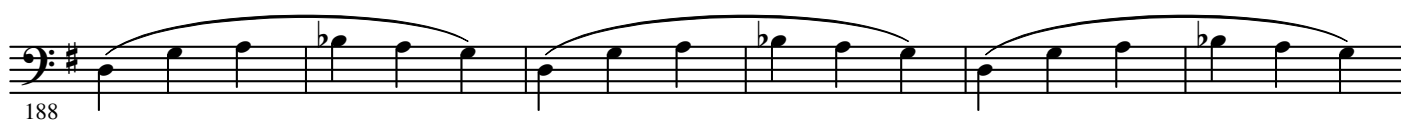
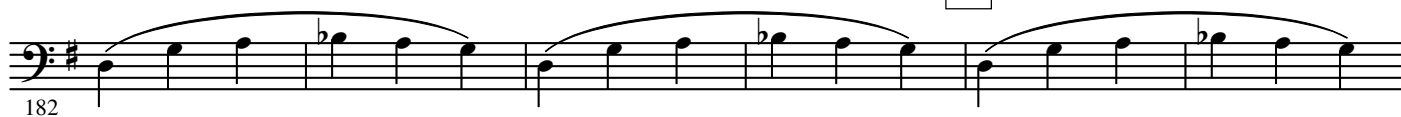
12 Più risoluto e mosso



13 Stretto



14



Lento assai

