

B♭ Bass

VALSE TRISTE

from Arvid Järnefelt's Drama "Kuolema"

Jean SIBELIUS Op. 44

Arr. José SCHYNS

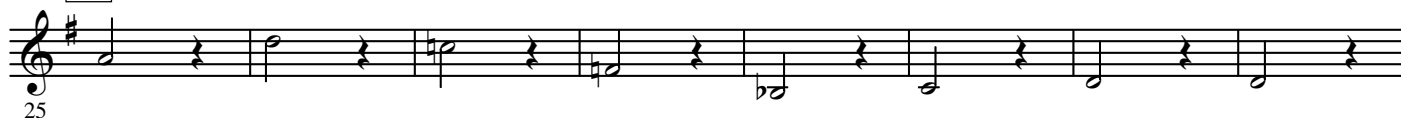
Lento



1



2



rall.

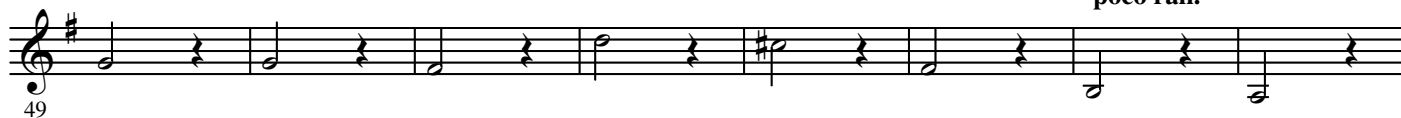


3

a tempo deciso



poco rall.



4

a tempo



2.

- B \flat Bass -

9 Poco risoluto

10



11



12 Più risoluto e mosso



13 Stretto



14



Lento assai

