

2nd B \flat Trombone b

VALSE TRISTE

from Arvid Järnefelt's Drama "Kuolema"

Jean SIBELIUS Op. 44

Arr. José SCHYNS

Lento *cue 2nd Hrn.* 1

1 *p* *pp* *p*

10

2

18

26

34 **rall.**

3 **a tempo deciso**
Play Muted *segue*

41 *pp*

49 **poco rall.**

4 **a tempo** *segue*

57 *più pp*

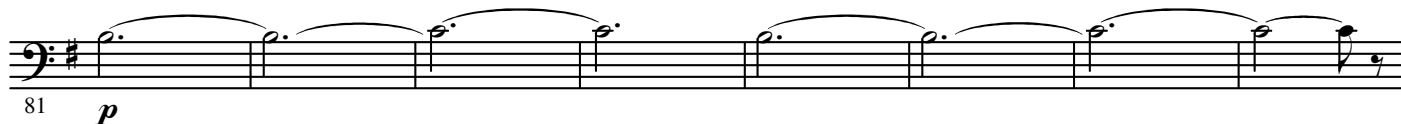
65 *p* **2**

2.

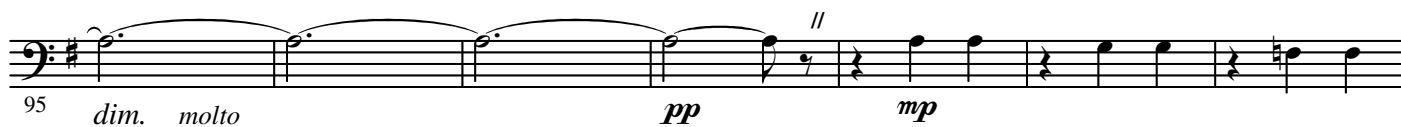
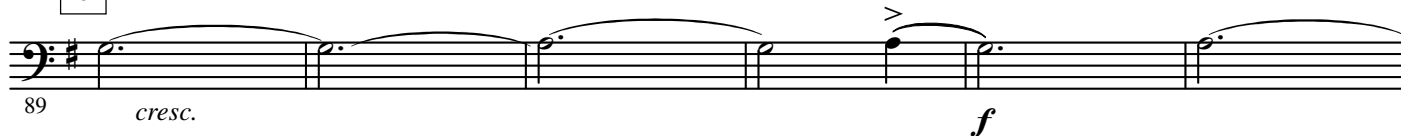
- 2nd B \flat Trombone -

5

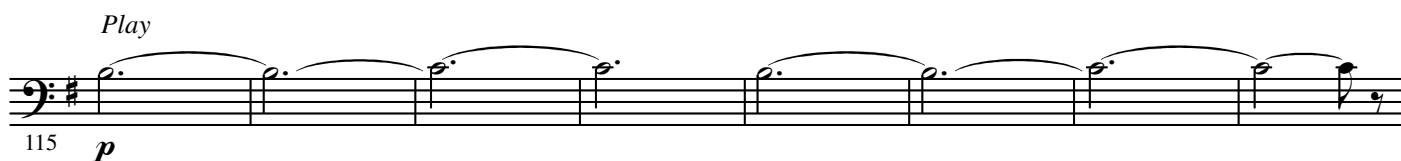
Open



6



7

a tempo
cue 2nd Hrn.

8



9

Poco risoluto

10



11



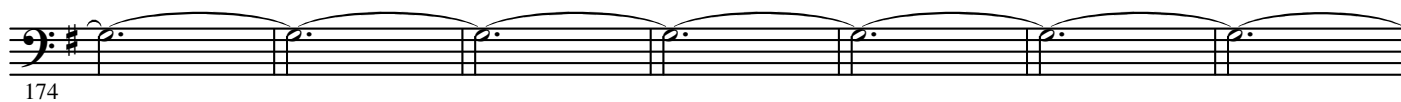
12

Più risoluto e mosso



13

Stretto



14



Lento assai

