

2nd B \flat Trombone

VALSE TRISTE

from Arvid Järnefelt's Drama "Kuolema"

Jean SIBELIUS Op. 44
Arr. José SCHYNS

Lento *cue 2nd Hrn.* 1

1 *p* *pp* *p*

10

2

18

26

rall.

34

3 **a tempo deciso**
Play Muted *segue*

41 *pp*

poco rall.

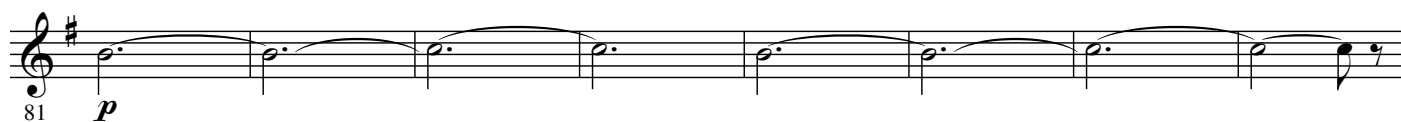
49

4 **a tempo**
segue

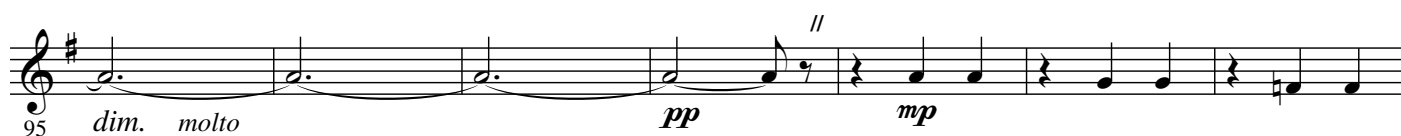
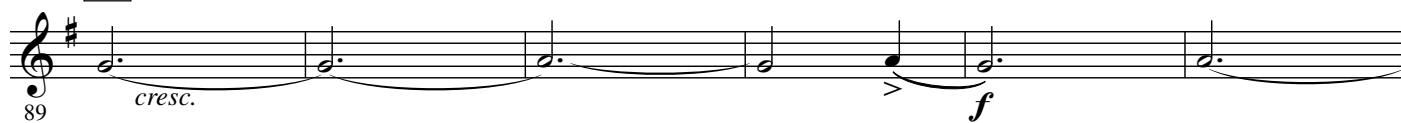
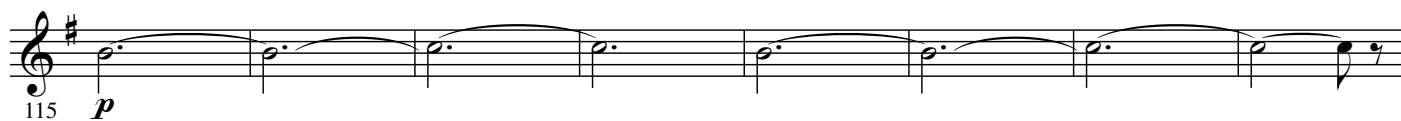
57 *più pp*

65 *p* **2**

2.

- 2nd B \flat Trombone -5 *Open*

6

*rit.* , *Lento*7 *a tempo*
cue 2nd Hrn.*Play*

8

9 *Poco risoluto*

10



11



12

Più risoluto e mosso



13

Stretto



14



Lento assai

