

3rd E \flat Horn

VALSE TRISTE

from Arvid Järnefelt's Drama "Kuolema"

Jean SIBELIUS Op. 44

Arr. José SCHYNS

Lento

1 2

p *pp* *p*

1 16 2 15 3 a tempo deciso 14 4 a tempo 2 14

9 rall. poco rall.

5

71 *mp* deciso

78 *p*

6

85 *cresc.*

93 *f* *dim. molto* *pp* *mp* //

rit. , Lento //

100 *pp*

7 a tempo 8

107 *p*

8

121 *cresc.* *f*

9 Poco risoluto



10



11

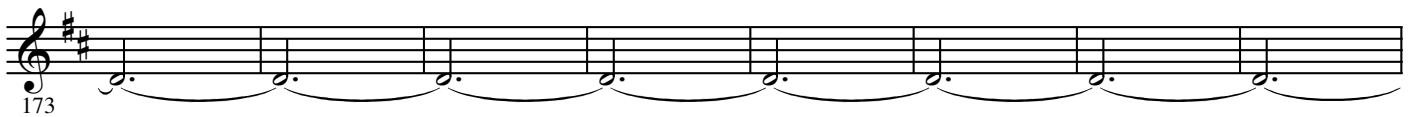
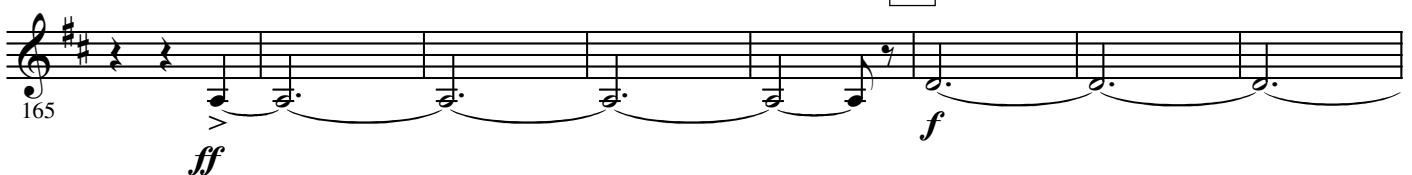


12

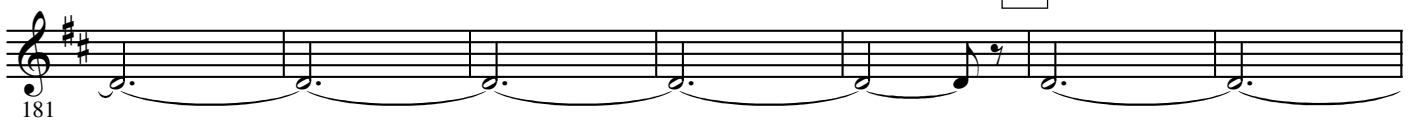
Più risoluto
e mosso



13 Stretto



14



Lento assai

