

1st B \flat Trombone b

VALSE TRISTE

from Arvid Järnefelt's Drama "Kuolema"

Jean SIBELIUS Op. 44

Arr. José SCHYNS

Lento *cue 1st Hrn.*

1 *p* *pp* *p*

10

18

26

34 **rall.**

3 **a tempo deciso**
Play Muted

41 *pp* *segue*

49 **poco rall.**

4 **a tempo**

57 *più pp* *segue*

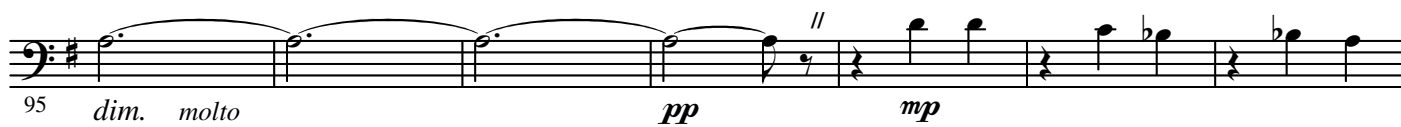
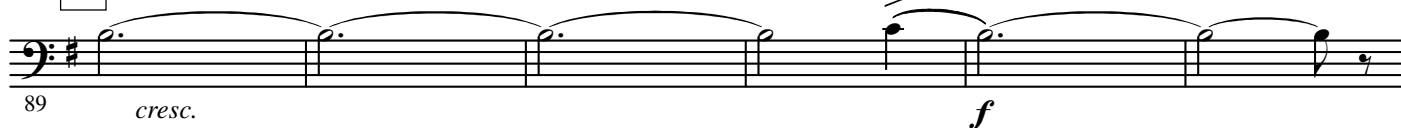
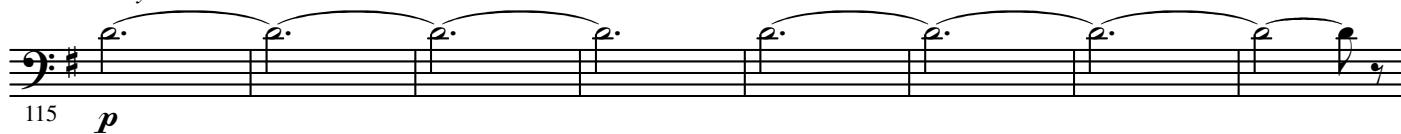
65 *p*

2

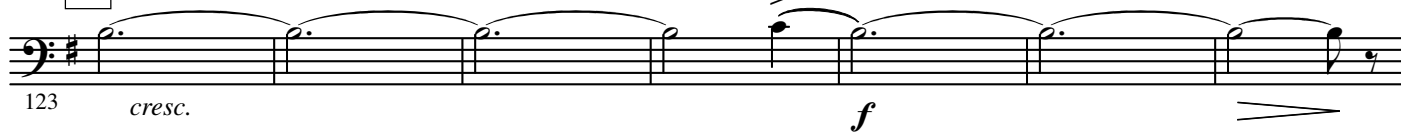
2.

- 1st B \flat Trombone -5 *Open*

6

*rit.*, *Lento*7 *a tempo*
cue 1st Hrn.*Play*

8

9 *Poco risoluto*

10



11



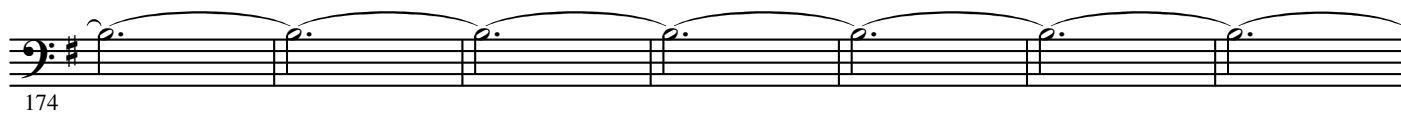
12

Più risoluto e mosso

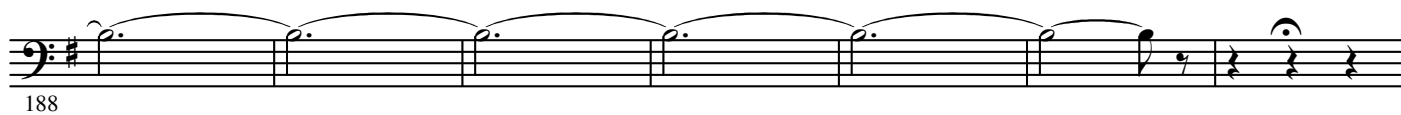
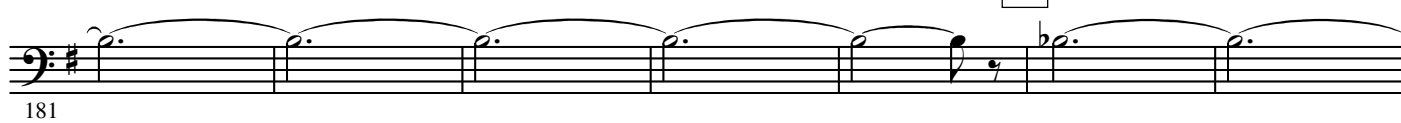


13

Stretto



14



Lento assai

