

1st B \flat Trombone

VALSE TRISTE

from Arvid Järnefelt's Drama "Kuolema"

Jean SIBELIUS Op. 44

Arr. José SCHYNS

Lento *cue 1st Hrn.* 1

1 *p* *pp* *p*

10

2

18

26

34 **rall.**

3 **a tempo deciso** *Play Muted* *segue*

41 *pp*

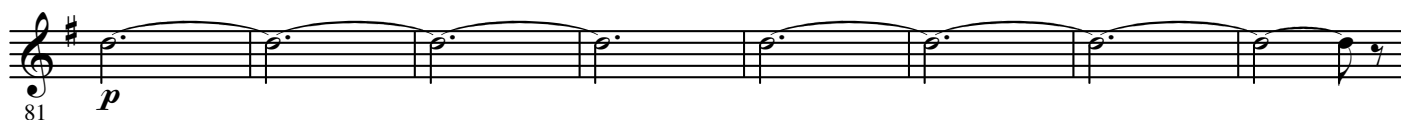
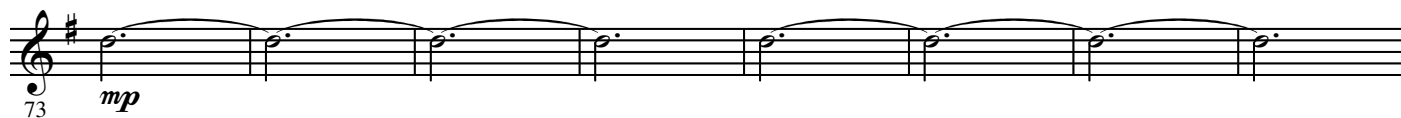
49 **poco rall.**

4 **a tempo** *segue*

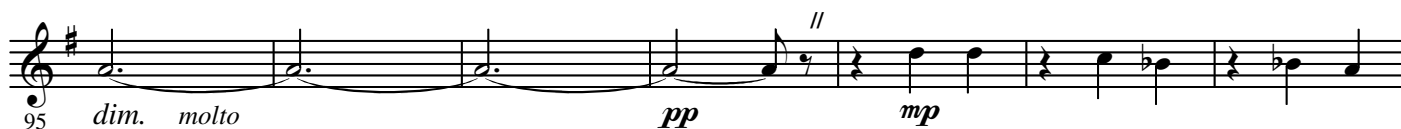
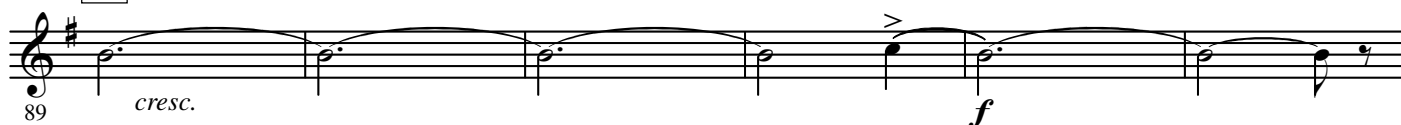
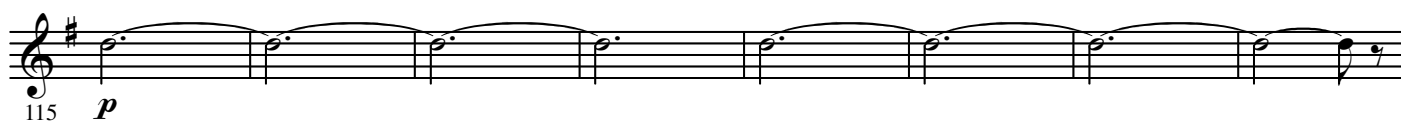
57 *più pp*

65 *p* **2**

2.

- 1st B \flat Trombone -5 *Open*

6

7 *a tempo*
cue 1st Hrn.*Play*

8

9 *Poco risoluto*

10



11



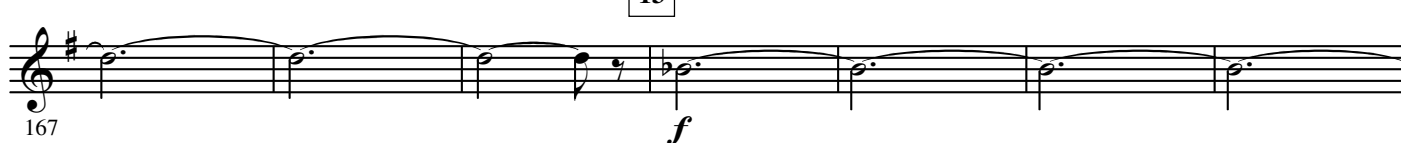
12

Più risoluto e mosso



13

Stretto



14



Lento assai

