

B \flat Bass

NURAGHI

Tre Danze primitive Sarde

Ennio PORRINO

Arr. José SCHYNS

Allegro barbaro (in 2 ♩ = 144)

I. DANZA DELLA TERRA

(2 + 3) 2 one All

1 *ppp* *pp* staccato

8 1 2 *pp* cresc.

14 *f* 2 16 2 one *p*

37 *pp*

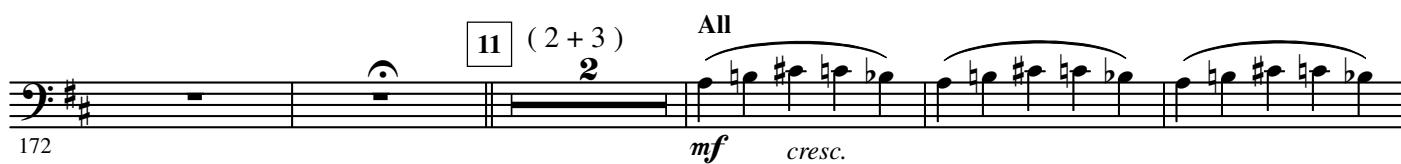
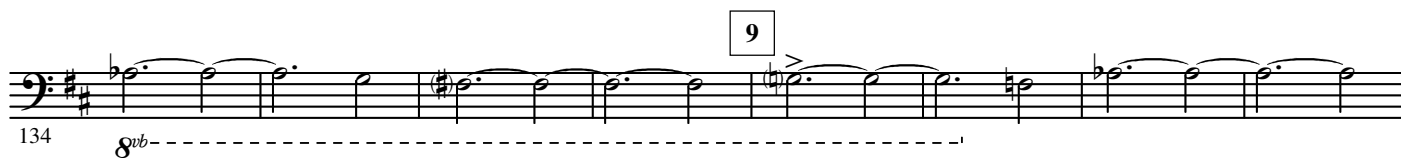
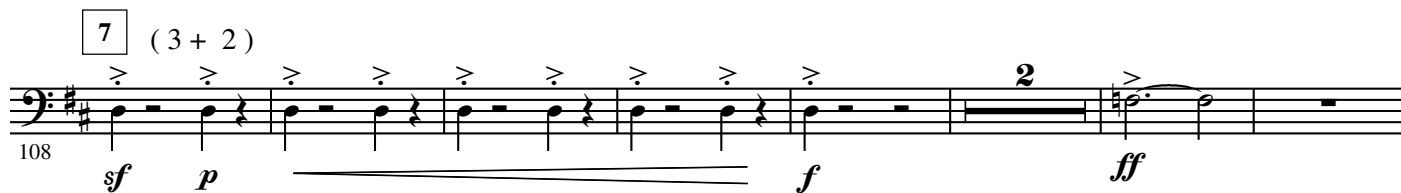
44 3 All *mf* one player 8vb

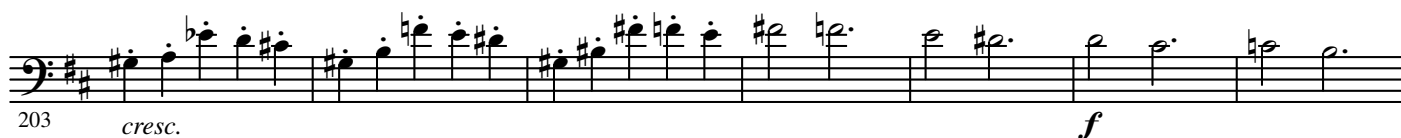
50 *f* 5

60 All loco *mf* 4 *p*

66 *cresc.*

72 5 12 *ff* *sf* 3 6 *sf* 3



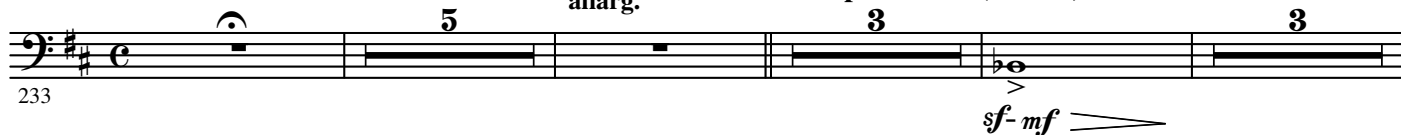


II. DANZA DELL' ACQUA

Lento e calmo

allarg.

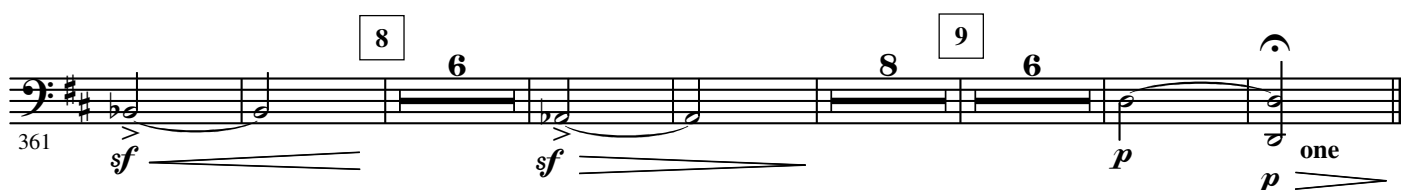
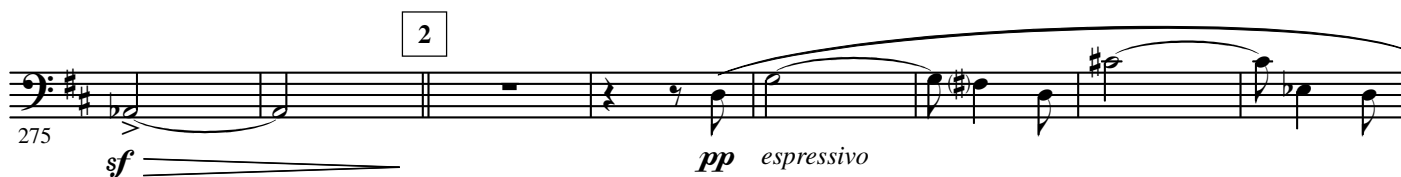
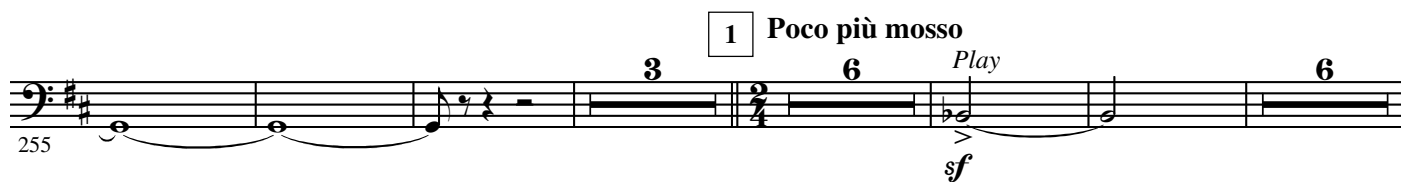
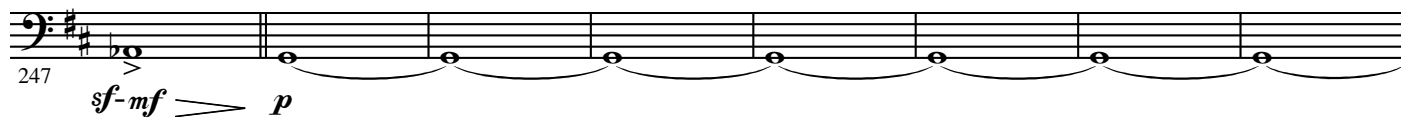
Poco più mosso (♩ = 76)



4.

- B \flat Bass -Tempo I $^{\circ}$

cue St. B.



III. DANZA DEL FUOCO

Allegro vivo (♩ = 200) (in 2)

12 1 14 2 Poco meno All

387

mf cresc.

a tempo 3 4

418

mf cresc.

428

f

4 435

mf cresc.

442

sf

5 (♩ = ♩) 6 two players only 12

450

fp fp

469

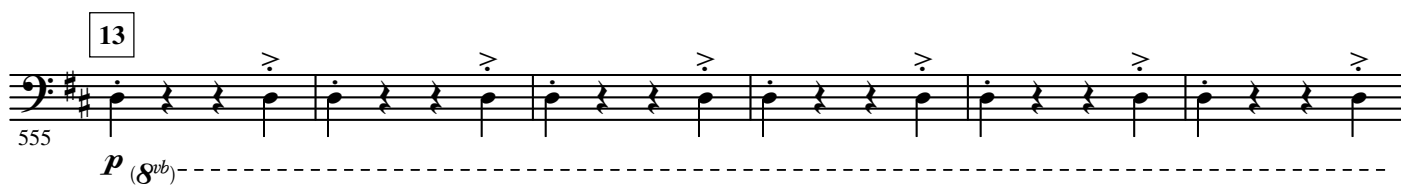
7 9 8 12 9 12 All

477

f

10 3

515

Tempo I $^{\circ}$ (in 2)12 a tempo ($\text{♩} = \text{♩} + \text{♩}$) (in 2)

579 *f* *g^{vb}*-----

586

(8^{vb})

592

(8^{vb}) ————— *ff*

598

allarg. a tempo

fp *ff* *sfz*

3

The musical score for the bass line of 'The Rose Tree' is shown. It begins at measure 598 with a key signature of two sharps (F# and C#) and a common time signature. The tempo marking 'allarg.' (ritardando) is placed above the first measure, which contains a half note G2. The tempo then changes to 'a tempo' (return to normal speed) at measure 600, which starts with a quarter note G2. The dynamics are marked as *fp* (fortissimo piano) at the beginning, *ff* (fortissimo) at measure 600, and *sfz* (sforzando) at measure 603. A triplet of eighth notes (G2, A2, B2) is marked with a '3' above it. The piece concludes with a final measure containing a quarter note G2 and a fermata.