

1st E \flat Horn

SYMPHONY N° 9

Opus 70

Dmitri Shostakovich

Arr. Hardy MERTENS &

J. M. SUYKERBUYK

I

Allegro $\text{♩} = 132$

Measures: 1, 4, 7, 16, 29, 41, 55, 78, 91, 97, 103, 119

Dynamics: *p*, *f*, *ff*

Articulation: *tr*, *>*, *<*

127 *f*

135 **16** *sempre* *ff*

140 **17**

146 *ff*

151 **18** *ff*

161 **19** *sempre* *ff*

175 **20** **21** *ff* *p* *one*

189 **22** *ff* *p* *All* *one*

197

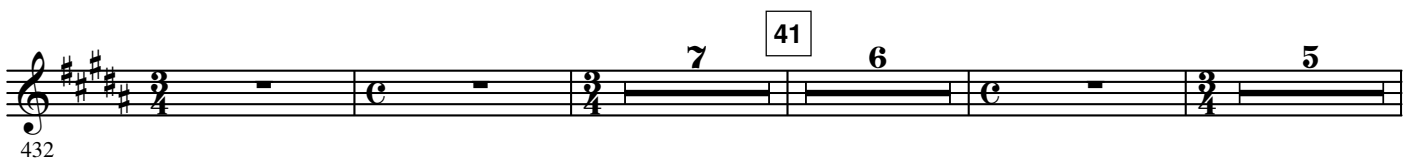
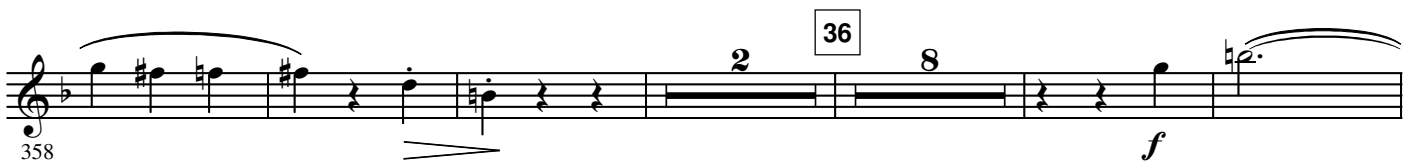
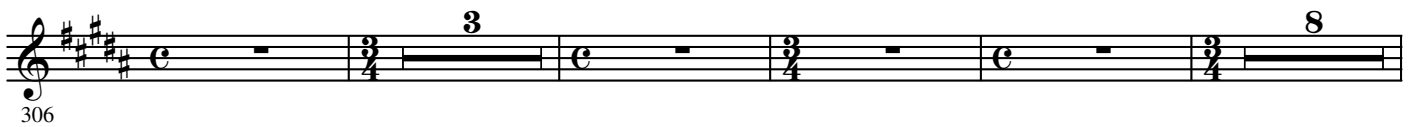
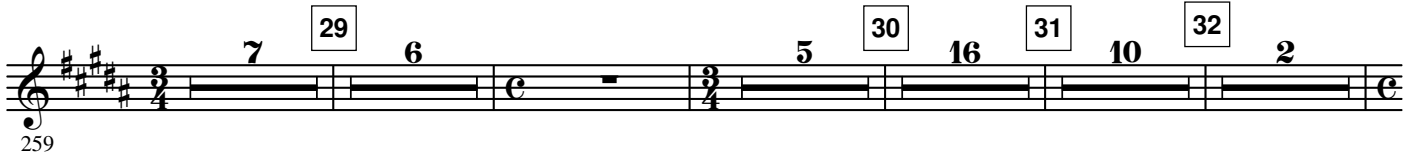
204 **23** *p* **24** **25**

230 **26** **27** *p cresc.* *ff* *All*

II

28 Moderato ♩ = 208

sempre ♩ = ♩



453 *p* *riten.* **42** *a tempo* *pp*

Staff 453-460: Treble clef, key of E major (three sharps). Measures 453-460. Dynamics: *p* (measures 453-455), *pp* (measures 456-460). Markings: *riten.* above measures 456-458. A box with the number 42 is above measure 458, followed by *a tempo*.

461 *cresc.* *p*

Staff 461-469: Treble clef, key of E major. Measures 461-469. Dynamics: *cresc.* (measures 461-463), *p* (measures 464-469).

470 *dim.* *pp* **43**

Staff 470-477: Treble clef, key of E major. Measures 470-477. Dynamics: *dim.* (measures 470-472), *pp* (measures 473-477). A box with the number 43 is above measure 473.

478 *cresc.* *p*

Staff 478-485: Treble clef, key of E major. Measures 478-485. Dynamics: *cresc.* (measures 478-480), *p* (measures 481-485).

486 *riten. molto* *f* *dim.* *pp* *p* **44** *a tempo*

Staff 486-494: Treble clef, key of E major. Measures 486-494. Dynamics: *f* (measures 486-488), *dim.* (measures 489-491), *pp* (measures 492-493), *p* (measures 494-495). Markings: *riten. molto* above measures 486-488. A box with the number 44 is above measure 492, followed by *a tempo*.

495 *pp* *p* **45**

Staff 495-503: Treble clef, key of E major. Measures 495-503. Dynamics: *pp* (measures 495-497), *p* (measures 498-503). A box with the number 45 is above measure 497.

504 **46** 4 3

Staff 504-515: Treble clef, key of E major. Measures 504-515. Measures 504-510 are marked with a box 46. Measures 511-512 are marked with a box 4 and a 4/4 time signature. Measures 513-515 are marked with a box 3 and a 3/4 time signature.

516 *riten.* **47** *a tempo* **48** 3 *Muted* *pp* *Adagio*

Staff 516-536: Treble clef, key of E major. Measures 516-536. Measures 516-518 are marked with a box 47 and *a tempo*. Measures 519-521 are marked with a box 48 and a 3/4 time signature. Measures 522-524 are marked with a box 3 and *Muted*. Measures 525-536 are marked with *pp* and *Adagio*.

537 *Open* 10

Staff 537-551: Treble clef, key of E major. Measures 537-551. Measures 537-551 are marked with *Open* and a box 10.

III **49** *Presto* ♩ = 126 **50** 8 **51** 4 *p* *cresc.* *f* *cresc.*

Staff 552-575: Treble clef, key of E major. Measures 552-575. Measures 552-554 are marked with a box 49 and *Presto*. Measures 555-557 are marked with a box 50 and 8. Measures 558-560 are marked with a box 51 and 4. Measures 561-575 are marked with *p*, *cresc.*, and *f*, *cresc.*.

52 *p* *cresc.* *f*

Staff 576-583: Treble clef, key of E major. Measures 576-583. Measures 576-583 are marked with a box 52, *p*, *cresc.*, and *f*.

53 6 54 8 55 *mf*

584 *f*

603 *f* *ff* > *mf*

612 *ff* *ff*

59 5 60 5 61 8 62 6 63 *f*

637 *ff*

665 *p*

64 8 65

66 6 7 6 *riten.* Attacca

681

IV

67 **Largo** ♩ = 84 *Bassoon* 68 10 *Bassoon* 69 4 6 Attacca

704

V

70 **Allegretto** ♩ = 100 71 25 72 ♩ = 132 *Muted* *p*

738

791 *mp* *mf*

73 2 *p* 74

801

811 *mf* *Open* 10

75 *Muted*

829 *p*

76

837 *cresc.* *Open*

77 *Stopped*

850 *mp* *p*

859

78

868

79 *Open*

876 *mf* *p* *p*

80

884 *p* *p*

81

898 *pp*

82

906 *p* *pp*

83

84

920

85

86

933

87 88

949 *pp* *cresc.* *f*

959

89 Pochissimo animato 90 (Pochissimo animato)

10

968 *cresc.* *f*

91

985

92

994

93

1003

94

1011

cresc.

95 a tempo ♩ = 100

1020 *poco ritenuto* *ff*

1027

1034

96

1041 *mf*

2

