

2nd B \flat Trombone

SYMPHONY N° 9

Opus 70

Dmitri Shostakovich

Arr. Hardy MERTENS &

J. M. SUYKERBUYK

Allegro $\text{♩} = 132$

I

1 4 2 3

2 3 9 4 6 5 8 6

7 8 4 7 9 8 10 2

79 1 2

11 8 12 10 13 2 11 14

121 15 2 2

130 16 sempre

138 17

146 2

154 18 6

f *mf* *f* *ff* *f* *ff* *ff*

19 *sempre* $\text{♩} = \text{♩}$ 20

167

21

176

ff *p*

22

190

ff *p*

23

199

p

24 25 10

208

26 27

231

p cresc. *ff*

28 *Moderato* $\text{♩} = 208$ *sempre* $\text{♩} = \text{♩}$ II

249

29 30 31 32

266

33

307

34

330

35 *a tempo* 36

340

riten.

37 17 38 12 39 16 40 3 3

379

41 7 6 8 2

432 *riten.*

42 a tempo 16 43 13 3 44 a tempo 9 45 9 46 4

458 *riten. molto*

47 a tempo 13 48 4 2 14

513 *riten.* *Adagio* *riten.*

III
Presto
49 ♩ = 126 50 8 51 8 52 8 53 6 54 8

552 *f*

55

599 *mf*

56 2 2

605 *ff* *> mf* *< ff*

57 10 58 8 59 5 60

615 *ff* *ff*

61 8 62 6

644 *f*

63 8 64 8 65 3 66 6 7 6

663 *riten.* **Attacca**

IV

67 Largo ♩ = 84



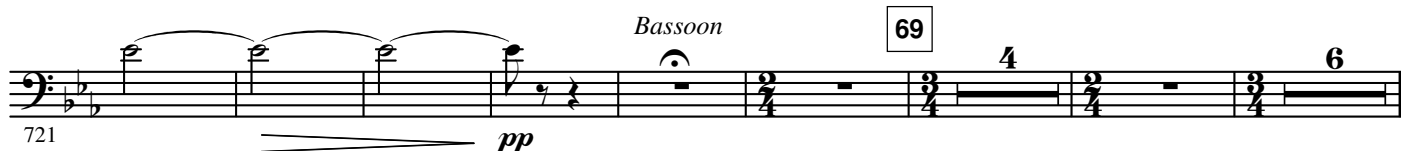
Bassoon

68



Bassoon

69



V

70 Allegretto ♩ = 100

71

72 ♩ = 132

73



74

75

76

77



78

79

80



81

82

83

84



85

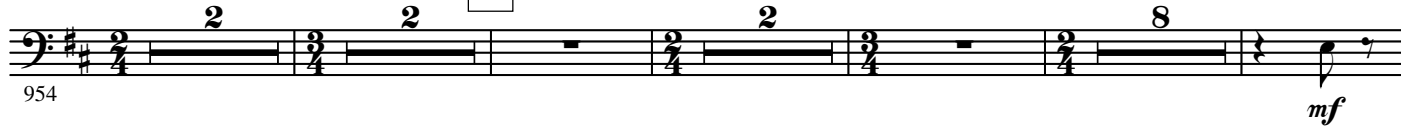


86

87



88



89 **Pochissimo animato** 90 **(Pochissimo animato)** 91

971 9 6 10

92

1000 *mf*

93 7 94 10 95 **a tempo** ♩ = 100

1007 *poco ritenuto ff*

1028 3

1035 3

96

1042 *mf*

1049 2

97

1057

1064

98 **Allegro** ♩ = 208

1071 3 2 2

6.

- 2nd B \flat Trombone -

1079

99

4 6 2

100

1093

p

101

1099

1106

102

103

8 8

1113