

2nd B \flat Trombone

CAPRICE BRILLANT

on a theme from "Jota Aragonesa"

M. I. GLINKA

Arranged by José SCHYNS

Introduction

Grave $\text{♩} = 58$
8

1 ***ff*** ***ff*** 12

25 ***p*** ***pp***

2 Allegro $\text{♩} = 69$ 3 4 5 8 8
16 16 19

32 **Jota Aragonesa**

6 7 24 2 ***f*** ***ff***

8 Più animato $\text{♩} = 76$ 8 ***ff***

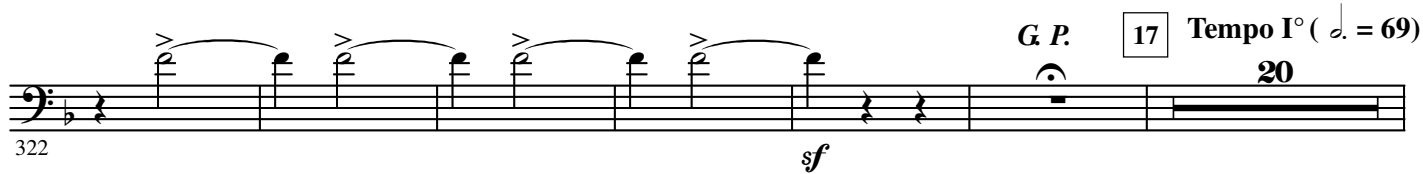
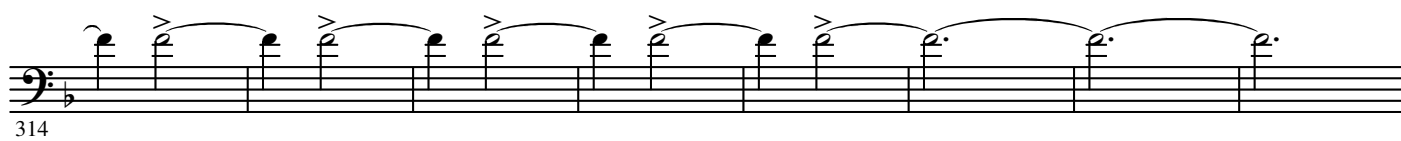
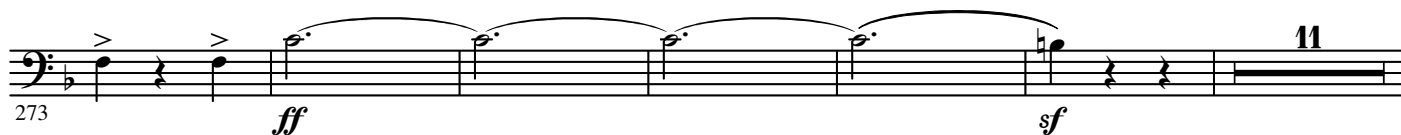
9 10 11 16
5 24 9 3 2 ***mf***

206 ***ff*** *cantabile*

12 214 ***fp*** ***fp***

222 ***fp*** ***fp*** ***pp*** *cresc.*

stringendo 229 ***f*** ***ff*** 13 Più mosso $\text{♩} = 88$ 11 ***sf***



371

19

371 372 373 374 375 376 377 378 379 380 381 382 383 384 385 386

379

379 380 381 382 383 384 385 386

387

20

387 388 389 390 391 392 393 394 395 396 397 398 399 400 401 402

395

395 396 397 398 399 400 401 402

403

21

sf

403 404 405 406 407 408 409 410

411

7

sf *ff*

411 412 413 414 415 416 417 418

425

22 16 23

mf *f*

425 426 427 428 429 430 431 432

448

24 16 25 4

pp cantabile

448 449 450 451 452 453 454 455

473

26

mf *sf* *sf*

473 474 475 476 477 478 479

480

6 6 11

ff *ff*

480 481 482 483 484 485 486 487 488 489 490

4.

- 2nd B \flat Trombone -

507 *ff*

2

This musical staff contains measures 507 through 514. It begins with a bass clef and a key signature of one flat. Measure 507 starts with a *ff* dynamic and features a half note G \flat with an accent. Measures 508-511 continue with a melodic line of half notes: A \flat , B \flat , C \flat , and D \flat , each with an accent and a slur. Measure 512 contains a whole rest with a '2' above it, indicating a second ending. Measures 513-514 continue the melodic line with half notes E \flat and F \flat , both with accents and a slur.

515

28

This musical staff contains measures 515 through 522. It continues the melodic line from the previous staff with half notes G \flat , A \flat , B \flat , and C \flat , each with an accent and a slur. A box containing the number '28' is positioned above measure 517. The staff concludes with half notes D \flat , E \flat , and F \flat , each with an accent and a slur.

523

This musical staff contains measures 523 through 529. It continues the melodic line with half notes G \flat , A \flat , and B \flat , each with an accent and a slur. Measures 524-529 consist of a series of half notes: C \flat , D \flat , E \flat , F \flat , G \flat , A \flat , B \flat , and C \flat , each with an accent. The staff ends with two measures of whole rests.

530 *G P.*

ff *sf*

This musical staff contains measures 530 through 537. It begins with a *G P.* (Grand Pause) marking above measure 530. The staff starts with a half note G \flat with an accent, followed by a whole rest. Measures 531-534 continue with a melodic line of half notes: A \flat , B \flat , C \flat , and D \flat , each with an accent and a slur. A *ff* dynamic is placed below measure 531. Measure 535 contains a half note E \flat with an accent, followed by a whole rest. A *sf* dynamic is placed below measure 535. Measures 536-537 conclude with a half note F \flat with an accent and a slur, followed by a whole rest. The staff ends with a double bar line.