

E♭ Bass

CAPRICE BRILLANT

on a theme from "Jota Aragonesa"

M. I. GLINKA
Arranged by José SCHYNS

Introduction

Grave ♩ = 58

1 *ff*

8 *ff* *p* *p*

15 *f* 5

20 3 5 3 5

24 3 *p*

2

Allegro ♩ = 69 **Jota Aragonesa**
one cue St. B.

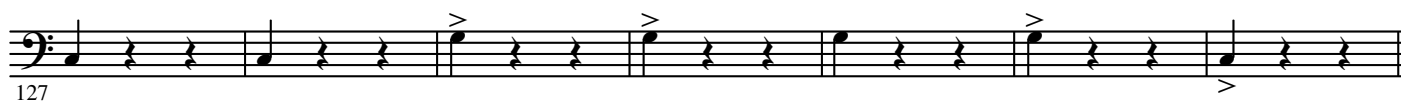
30 *pp* *pp*

37

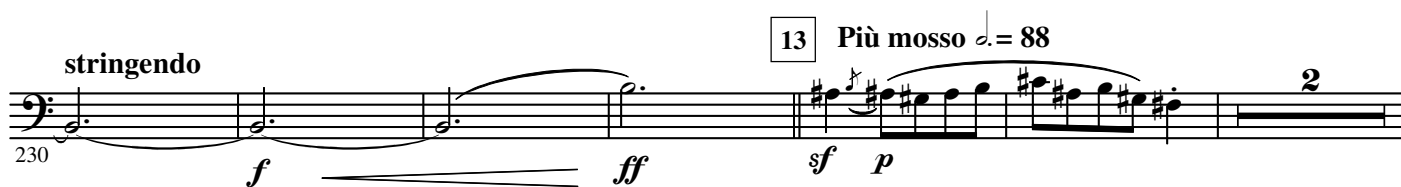
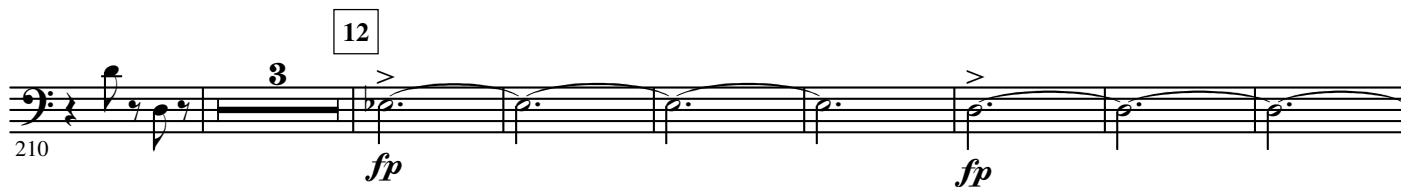
3 *Play All* 2 3

46 *mf*

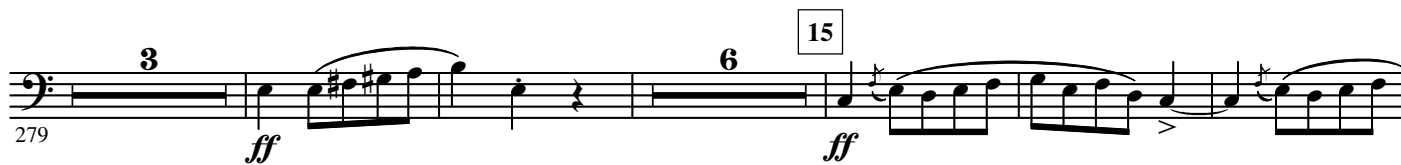
2.

- E \flat Bass -

8 Più animato $\text{♩} = 76$



4.

- E \flat Bass -

6.

- E₂ Bass -

21

406 *sf*

413 *sf ff*

22

421 *pp*

429 *p cresc.*

23

437 *f*

24

445 *cresc. pp*

453

25

460 *mf*

26

470 *mf sf ff*

480 *p ff*

27

494 *ff* *mf* *f* *ff*

508

28

516

523

G. P.

530 *ff* *sf*