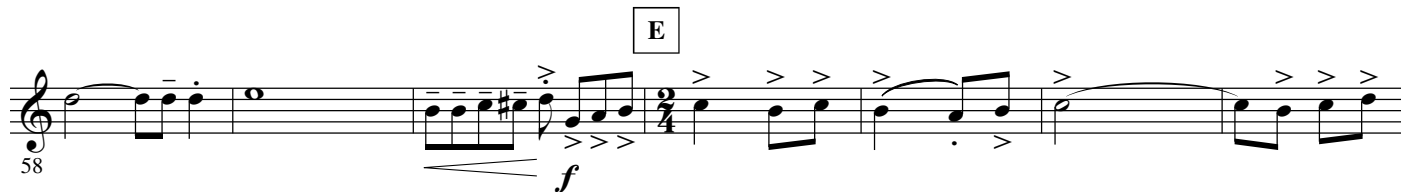
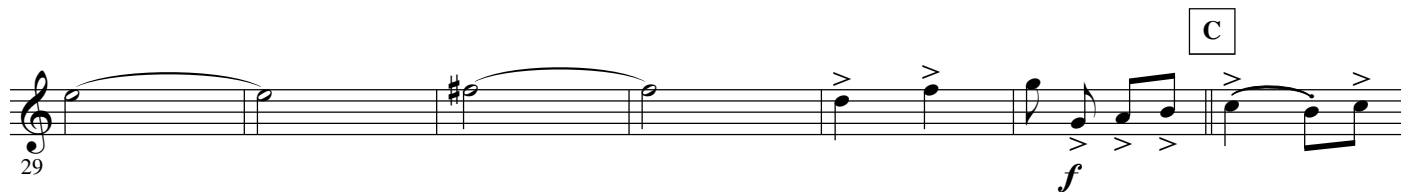
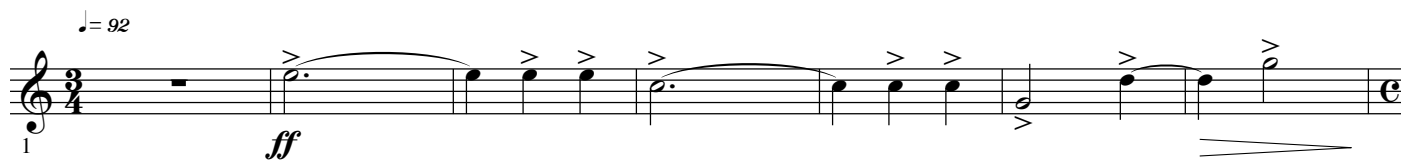


# B, Trombone 1

# LAMA

Serge LAMA  
Arr. Maxime LEGAULOIS



72 F *f*

79

87 G  $\text{♩} = 104$  *f*

95 H "Je suis malade" *mp*

103 I

111 J *mf*

119

127

134 K *mf*

142 L *mf*

150 *ff*

3.

- B $\flat$  Trombone 1 -

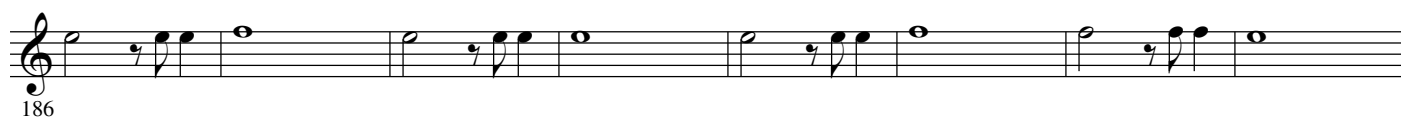
M

 $\text{♩} = 112$ 

N

*"Je t'aime à la folie"*

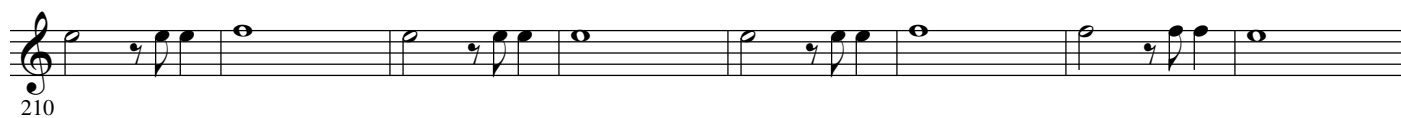
O



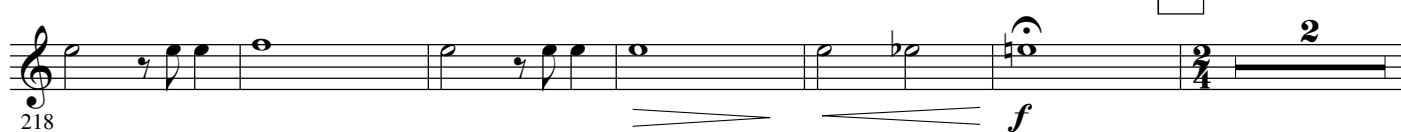
P



Q



R

 $\text{♩} = 132$ 

S

*"Femme, femme, femme"*

